

Oklahoma Corporation Commission
Oil & Gas Conservation Division
Post Office Box 52000
Oklahoma City, Oklahoma 73152-2000
Rule 165: 10-3-25

Form 1002A

API No.: 35073256790000

Completion Report

Spud Date: July 14, 2017

OTC Prod. Unit No.: 073-222238

Drilling Finished Date: July 22, 2017

1st Prod Date: September 09, 2017

Completion Date: August 31, 2017

Drill Type: HORIZONTAL HOLE

Min Gas Allowable: Yes

Well Name: EARL 14-18-6 2H

Purchaser/Measurer: CHESAPEAKE OPERATING LLC

Location: KINGFISHER 14 18N 6W
SW SW SW SE
315 FSL 2485 FEL of 1/4 SEC
Derrick Elevation: 1208 Ground Elevation: 1180

First Sales Date: 09/09/2017

Operator: CHESAPEAKE OPERATING LLC 17441
PO BOX 18496
6100 N WESTERN AVE
OKLAHOMA CITY, OK 73154-0496

Completion Type		Location Exception		Increased Density	
X	Single Zone	Order No		Order No	
	Multiple Zone	669286		664345	
	Commingled				

Casing and Cement							
Type	Size	Weight	Grade	Feet	PSI	SAX	Top of CMT
SURFACE	9 5/8	36	J-55	1498		595	SURFACE
PRODUCTION	7	26	P-110EC	6673		265	3371

Liner								
Type	Size	Weight	Grade	Length	PSI	SAX	Top Depth	Bottom Depth
LINER	4 1/2	13.5	P-110EC	5035	0	485	6248	11283

Total Depth: 11285

Packer		Plug	
Depth	Brand & Type	Depth	Plug Type
There are no Packer records to display.		11134	CIBP

Initial Test Data										
Test Date	Formation	Oil BBL/Day	Oil-Gravity (API)	Gas MCF/Day	Gas-Oil Ratio Cu FT/BBL	Water BBL/Day	Pumpin or Flowing	Initial Shut-In Pressure	Choke Size	Flow Tubing Pressure
Sep 30, 2017	OSWEGO	1117	40.14	1295	1159	1384	PUMPING			501

Completion and Test Data by Producing Formation			
Formation Name: OSWEGO		Code: 404OSWG	Class: OIL
Spacing Orders		Perforated Intervals	
Order No	Unit Size	From	To
663730	640	6546	11130
Acid Volumes		Fracture Treatments	
299,100 GALLONS ACID		48,412 BARRELS FLUIDS	

Formation	Top
OSWEGO	6541

Were open hole logs run? No
Date last log run:

Were unusual drilling circumstances encountered? No
Explanation:

Other Remarks
SIDETRACK - 10,347'

Lateral Holes
Sec: 14 TWP: 18N RGE: 6W County: KINGFISHER NW NW NW NE 179 FNL 2630 FEL of 1/4 SEC Depth of Deviation: 5930 Radius of Turn: 453 Direction: 2 Total Length: 4744 Measured Total Depth: 11285 True Vertical Depth: 6383 End Pt. Location From Release, Unit or Property Line: 179

FOR COMMISSION USE ONLY	
Status: Accepted	1137807

API NO. 073-25679
OTC PROD. 073-222238
UNIT NO. 073-222238

PLEASE TYPE OR USE BLACK INK ONLY
NOTE:
Attach copy of original 1002A if recompletion or reentry.

OKLAHOMA CORPORATION COMMISSION

Oil & Gas Conservation Division

Post Office Box 52000

Oklahoma City, Oklahoma 73152-2000

Rule 165:10-3-25

RECEIVED Form 1002A Rev. 2009

OCT 10 2017

OKLAHOMA CORPORATION COMMISSION

☒ ORIGINAL
☐ AMENDED
Reason Amended

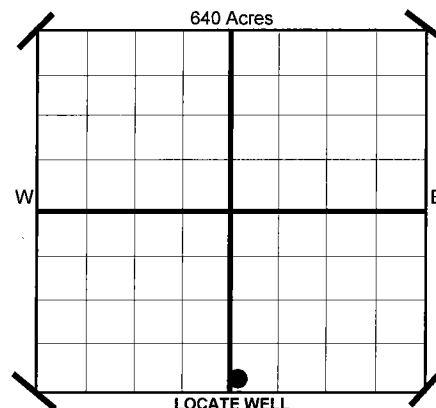
TYPE OF DRILLING OPERATION

☐ STRAIGHT HOLE ☐ DIRECTIONAL HOLE ☒ HORIZONTAL HOLE
SERVICE WELL

If directional or horizontal, see reverse for bottom hole location.

COMPLETION REPORT

COUNTY	Kingfisher	SEC	14	TWP	18N	RGE	6W
LEASE NAME	Earl 14-18-6		WELL NO	2H		SPUD DATE	7/14/2017
SHL	SW 1/4 SW 1/4 SW 1/4 SE 1/4		FSL	315 1/4 SEC		2,485	DRLG FINISHED DATE 7/22/2017
ELEVATION	Derrick Fl 1,208 Ground 1,180		Latitude (if Known)			DATE OF WELL COMPLETION	8/31/2017
OPERATOR NAME	CHESAPEAKE OPERATING, L.L.C.				OTC/OCC OPERATOR NO.	17441	
ADDRESS	P.O. BOX 18496						
CITY	OKLAHOMA CITY		STATE	OK		ZIP	73154



COMPLETION TYPE

<input checked="" type="checkbox"/> SINGLE ZONE
<input type="checkbox"/> MULTIPLE ZONE
Application Date
COMMINGLED
Application Date
LOCATION
EXCEPTION ORDER NO.
INCREASED DENSITY ORDER NO.

669286 F.O.
664426 (interim)
664345

CASING & CEMENT (Form 1002C must be attached)

TYPE	SIZE	WEIGHT	GRADE	FEET	PSI	SAX	TOP
CONDUCTOR							
SURFACE	9-5/8"	36#	J-55	1,498		595	Surface
INTERMEDIATE							
PRODUCTION	7"	26#	P-110EC	6,673		265	3,371
LINER	4-1/2"	13.5#	P-110EC	6,248-11,283		485	6,248
							11,285

PACKER @ BRAND & TYPE
PACKER @ BRAND & TYPE

PLUG @ TYPE
PLUG @ TYPE
PLUG @ 11,134 TYPE CIBP

TOTAL DEPTH 11,285

COMPLETION & TEST DATA BY PRODUCING FORMATION

FORMATION	Oswego						
SPACING & SPACING	640						
ORDER NUMBER	663730						
CLASS: Oil, Gas, Dry, Inj, Disp, Comm Disp, Svc	Oil						
PERFORATED INTERVALS	6,546 - 11,130						
ACID/VOLUME	299,100 gals acid						
FRACTURE TREATMENT (Fluids/Prop Amounts)	48,412 bbls fluids						

Monitor Report to Frac Focus

Minimum Gas Allowable (165:10-17-7)

Gas Purchaser/Measurer

Chesapeake Operating, L.L.C.

☒

OR

1st Sales Date

9/9/2017

Oil Allowable (165:10-13-3)

INITIAL TEST DATA

INITIAL TEST DATE	9/30/2017						
OIL-BBL/DAY	1,117						
OIL-GRAVITY (API)	40.14						
GAS-MCF/DAY	1,295						
GAS-OIL RATIO CU FT/BBL	1,159						
WATER-BBL/DAY	1,384						
PUMPING OR FLOWING	Pumping						
INITIAL SHUT-IN PRESSURE							
CHOKE SIZE							
FLOW TUBING PRESSURE	501						

AS SUBMITTED

A record of the formations drilled through, and pertinent remarks are presented on the reverse. I declare that I have knowledge of the contents of this report and am authorized by my organization to make this report, which was prepared by me or under my supervision and direction, with the data and facts stated herein to be true, correct, and complete to the best of my knowledge and belief.

Juanita Cooper	JUANITA COOPER - SR. REGULATORY ANALYST	10/9/2017	405-848-8000
SIGNATURE	NAME (PRINT OR TYPE)	DATE	PHONE NUMBER
P.O. BOX 18496	OKLAHOMA CITY	OK	73154
ADDRESS	CITY	STATE	ZIP
		juanita.cooper@chk.com	
		EMAIL ADDRESS	

PLEASE TYPE OR USE BLACK INK ONLY
FORMATION RECORD

Give formation names and tops, if available, or descriptions and thickness of formations drilled through. Show intervals cored or drillstem tested.

LEASE NAME Earl 14-18-6

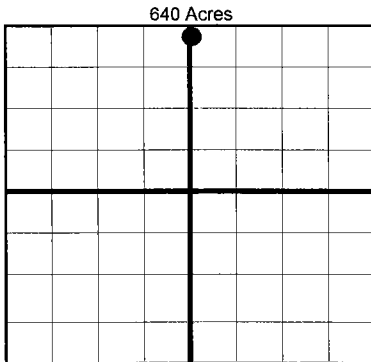
WELL NO. 2H

NAMES OF FORMATIONS	TOP
Oswego	6,541

FOR COMMISSION USE ONLY	
ITD on file <input type="checkbox"/> YES <input type="checkbox"/> NO	
APPROVED _____	DISAPPROVED _____
2) Reject Codes	

Were open hole logs run?	yes	<input checked="" type="checkbox"/> no
Date last log was run	N/A	
Was CO ₂ encountered?	yes	<input checked="" type="checkbox"/> no at what depths?
Was H ₂ S encountered?	yes	<input checked="" type="checkbox"/> no at what depths?
Were unusual drilling circumstances encountered?	yes <input checked="" type="checkbox"/> no	
If yes, briefly explain.		

Other remarks: Sidetrack - 10,347'



640 Acres

BOTTOM HOLE LOCATION FOR DIRECTIONAL HOLE

SEC	TWP	RGE	COUNTY
Spot Location	1/4	1/4	1/4
Measured Total Depth	True Vertical Depth		Feet From 1/4 Sec Lines FSL FWL
BHL From Lease, Unit, or Property Line:			

BOTTOM HOLE LOCATION FOR HORIZONTAL HOLE: (LATERALS)

SEC	TWP	RGE	COUNTY
14	18N	6W	Kingfisher
Spot Location	NW 1/4	NW 1/4	NE 1/4
Depth of Deviation	5,930	Radius of Turn	453
Measured Total Depth	True Vertical Depth		Direction 2
11,285		6,383	Total Length 4,744
BHL From Lease, Unit, or Property Line: 179			

LATERAL #2

SEC	TWP	RGE	COUNTY
Spot Location	1/4	1/4	1/4
Depth of Deviation	Radius of Turn		Direction
Measured Total Depth	True Vertical Depth		Total Length
BHL From Lease, Unit, or Property Line:			

LATERAL #3

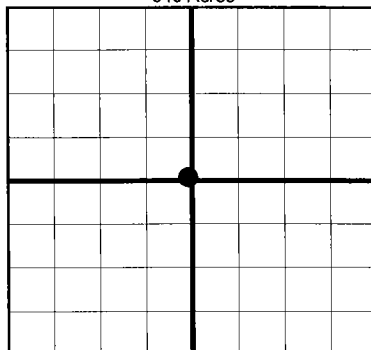
SEC	TWP	RGE	COUNTY
Spot Location	1/4	1/4	1/4
Depth of Deviation	Radius of Turn		Direction
Measured Total Depth	True Vertical Depth		Total Length
BHL From Lease, Unit, or Property Line:			

If more than three drainholes are proposed, attach a separate sheet indicating the necessary information.

Direction must be stated in degrees azimuth. Please note, the horizontal drainhole and its end point must be located within the boundaries of the lease or spacing unit.

Directional surveys are required for all drainholes and directional wells.

640 Acres



TOPOGRAPHIC LAND SURVEYORS OF OKLAHOMA

6709 NORTH CLASSEN BLVD., OKLA. CITY, OKLA. 73116 * LOCAL (405) 843-4847 * OUT OF STATE (800) 654-3219

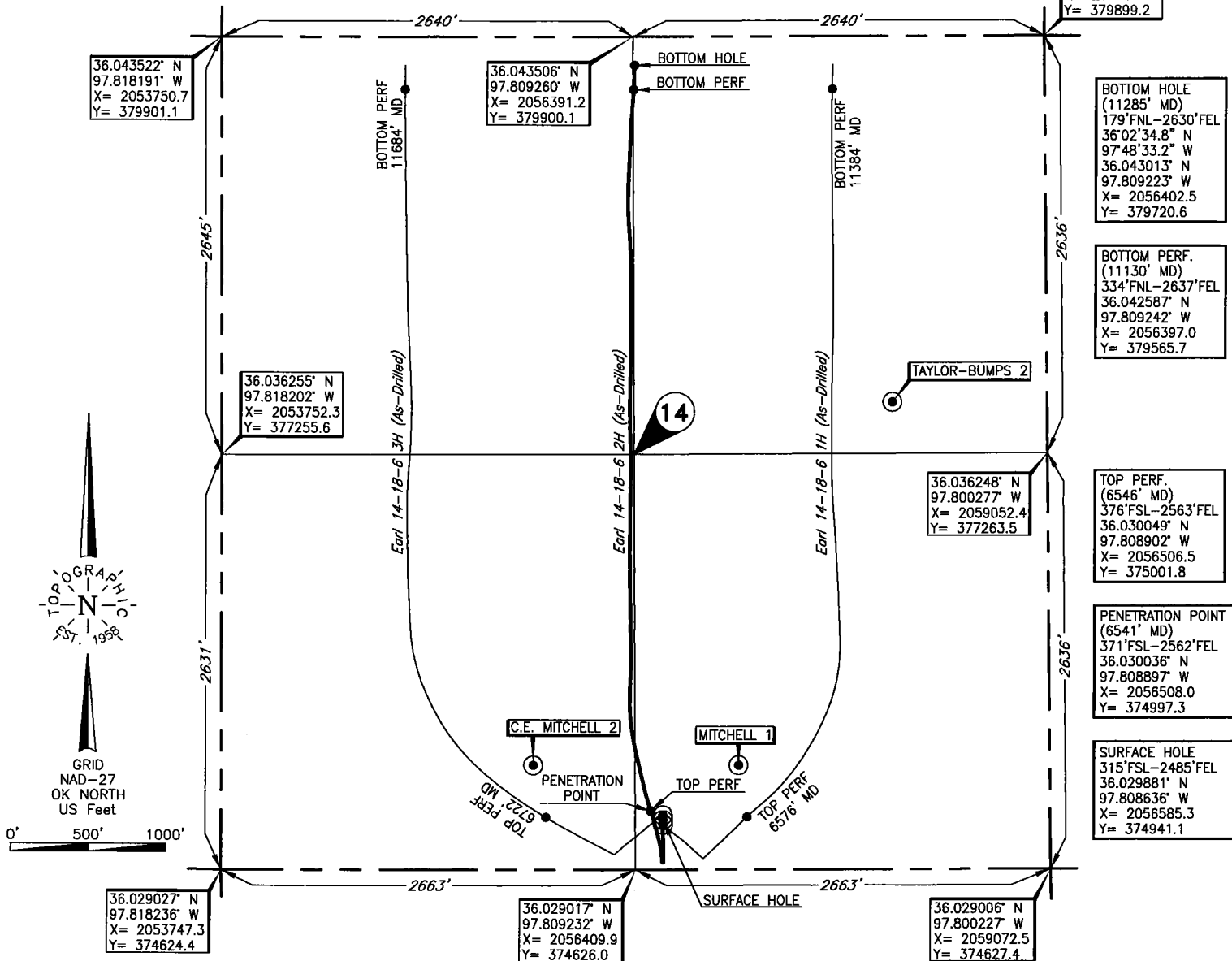
Certificate of Authorization No. 1293 LS

KINGFISHER

County, Oklahoma

315'FSL - 2485'FEL Section 14 Township 18N Range 6W I.M.

36.043489° N
97.800329° W
X= 2059031.5
Y= 379899.2



Operator: CHESAPEAKE OPERATING, L.L.C.

Lease Name: EARL 14-18-6

Well No.: 2H

ELEVATION:

1180' Gr. at Level Pad

Topography & Vegetation Loc. fell on level pad, ±235' North of possible E-W pipeline

Good Drill Site? Yes Reference Stakes or Alternate Location
Stakes Set None

Best Accessibility to Location From South off county road

Distance & Direction

from Hwy Jct or Town From Hennessey, OK, go ±5.5 mi. East on St. Hwy. 51, then

±6.0 mi. South to the SE Cor. of Sec. 14-T18N-R6W

281298 Date of Drawing: Sep. 18, 2017

Invoice # 269804A Date Staked: Apr. 17, 2017

JP

(This information was gathered with a GPS receiver with ±1 foot horiz./vert. accuracy.)

DATUM: NAD-27
LAT: 36°01'47.6" N
LONG: 97°48'31.1" W
LAT: 36.029881° N
LONG: 97.808636° W
STATE PLANE
COORDINATES: (US Feet)
ZONE: OK NORTH
X: 2056585.3
Y: 374941.1

FINAL AS-DRILLED PLAT

AS-DRILLED INFORMATION
FURNISHED BY CHESAPEAKE OPERATING