

Oklahoma Corporation Commission
Oil & Gas Conservation Division
Post Office Box 52000
Oklahoma City, Oklahoma 73152-2000
Rule 165: 10-3-25

Form 1002A

API No.: 35003232740000

Completion Report

Spud Date: April 01, 2017

OTC Prod. Unit No.: 003-219254

Drilling Finished Date: June 18, 2017

1st Prod Date: August 30, 2017

Completion Date: August 21, 2017

Drill Type: HORIZONTAL HOLE

Min Gas Allowable: Yes

Well Name: PATTON 25&24-26-11 1H

Purchaser/Measurer: CHESAPEAKE OPERATING LLC

Location: ALFALFA 25 26N 11W
SE SW SW SE
250 FSL 2300 FEL of 1/4 SEC
Derrick Elevation: 1228 Ground Elevation: 1203

First Sales Date: 08/30/2017

Operator: CHESAPEAKE OPERATING LLC 17441
PO BOX 18496
6100 N WESTERN AVE
OKLAHOMA CITY, OK 73154-0496

Completion Type		Location Exception		Increased Density	
X	Single Zone	Order No		Order No	
	Multiple Zone	669252		There are no Increased Density records to display.	
	Commingled				

Casing and Cement							
Type	Size	Weight	Grade	Feet	PSI	SAX	Top of CMT
SURFACE	16	65	H-40	648		345	SURFACE
INTERMEDIATE	10 3/4	45.50	J-55 / K-55	1213		475	SURFACE
PRODUCTION	7 5/8	29.70	P-110	6108		370	2002

Liner								
Type	Size	Weight	Grade	Length	PSI	SAX	Top Depth	Bottom Depth
LINER	4 1/2	13.5	P-110EC	10309	0	560	5818	16127

Total Depth: 16127

Packer	
Depth	Brand & Type
There are no Packer records to display.	

Plug	
Depth	Plug Type
There are no Plug records to display.	

Initial Test Data

Test Date	Formation	Oil BBL/Day	Oil-Gravity (API)	Gas MCF/Day	Gas-Oil Ratio Cu FT/BBL	Water BBL/Day	Pumpin or Flowing	Initial Shut-In Pressure	Choke Size	Flow Tubing Pressure
Sep 19, 2017	MISSISSIPPIAN	357	37.7	2225	6232	4115	PUMPING			242

Completion and Test Data by Producing Formation										
Formation Name: MISSISSIPPIAN				Code: 359MSSP				Class: OIL		
Spacing Orders				Perforated Intervals						
Order No		Unit Size		From			To			
660063		640		6030			16028			
Acid Volumes				Fracture Treatments						
25,810 GALLONS ACID				90,992 BARRELS FLUIDS						

Formation	Top
MISSISSIPPIAN	5979

Were open hole logs run? No

Date last log run:

Were unusual drilling circumstances encountered? No

Explanation:

Other Remarks
There are no Other Remarks.

Lateral Holes
Sec: 24 TWP: 26N RGE: 11W County: ALFALFA NW NW NE NE 166 FNL 1131 FEL of 1/4 SEC Depth of Deviation: 4803 Radius of Turn: 772 Direction: 360 Total Length: 10148 Measured Total Depth: 16127 True Vertical Depth: 5575 End Pt. Location From Release, Unit or Property Line: 166

FOR COMMISSION USE ONLY
<div>Status: Accepted</div> <div>1137758</div>

Give formation names and tops, if available, or descriptions and thickness of formations drilled through. Show intervals cored or drillstem tested.

LEASE NAME Patton 25&24-26-11

WELL NO. 1H

NAMES OF FORMATIONS	TOP
Mississippian	5,979

FOR COMMISSION USE ONLY	
ITD on file	<input type="checkbox"/> YES <input type="checkbox"/> NO
APPROVED	DISAPPROVED
2) Reject Codes	

Were open hole logs run? yes X no

Date Last log was run N/A

Was CO₂ encountered? yes X no at what depths?

Was H₂S encountered? yes X no at what depths?

Were unusual drilling circumstances encountered? yes X no

If yes, briefly explain.

Other remarks:

640 Acres

If more than three drainholes are proposed, attach a separate sheet indicating the necessary information.

Direction must be stated in degrees azimuth.
Please note, the horizontal drainhole and its end point must be located within the boundaries of the lease or spacing unit.

Directional surveys are required for all drainholes and directional wells.

BOTTOM HOLE LOCATION FOR DIRECTIONAL HOLE

SEC	TWP	RGE	COUNTY
Spot Location	1/4	1/4	1/4
Measured Total Depth	True Vertical Depth	Feet From 1/4 Sec Lines	FSL
		FWL	

BOTTOM HOLE LOCATION FOR HORIZONTAL HOLE: (LATERALS)

LATERAL #1

SEC 24	TWP 26N	RGE 11W	COUNTY Alfalfa
Spot Location			
NW 1/4	NW 1/4	NE 1/4	NE 1/4
Feet From 1/4 Sec Lines		FNL 166	FEL 1,131
Depth of Deviation	4,803	Radius of Turn	772
Direction		360	Total Length
Measured Total Depth		16,127	10,148
True Vertical Depth		5,575	BHL From Lease, Unit, or Property Line:
		166	

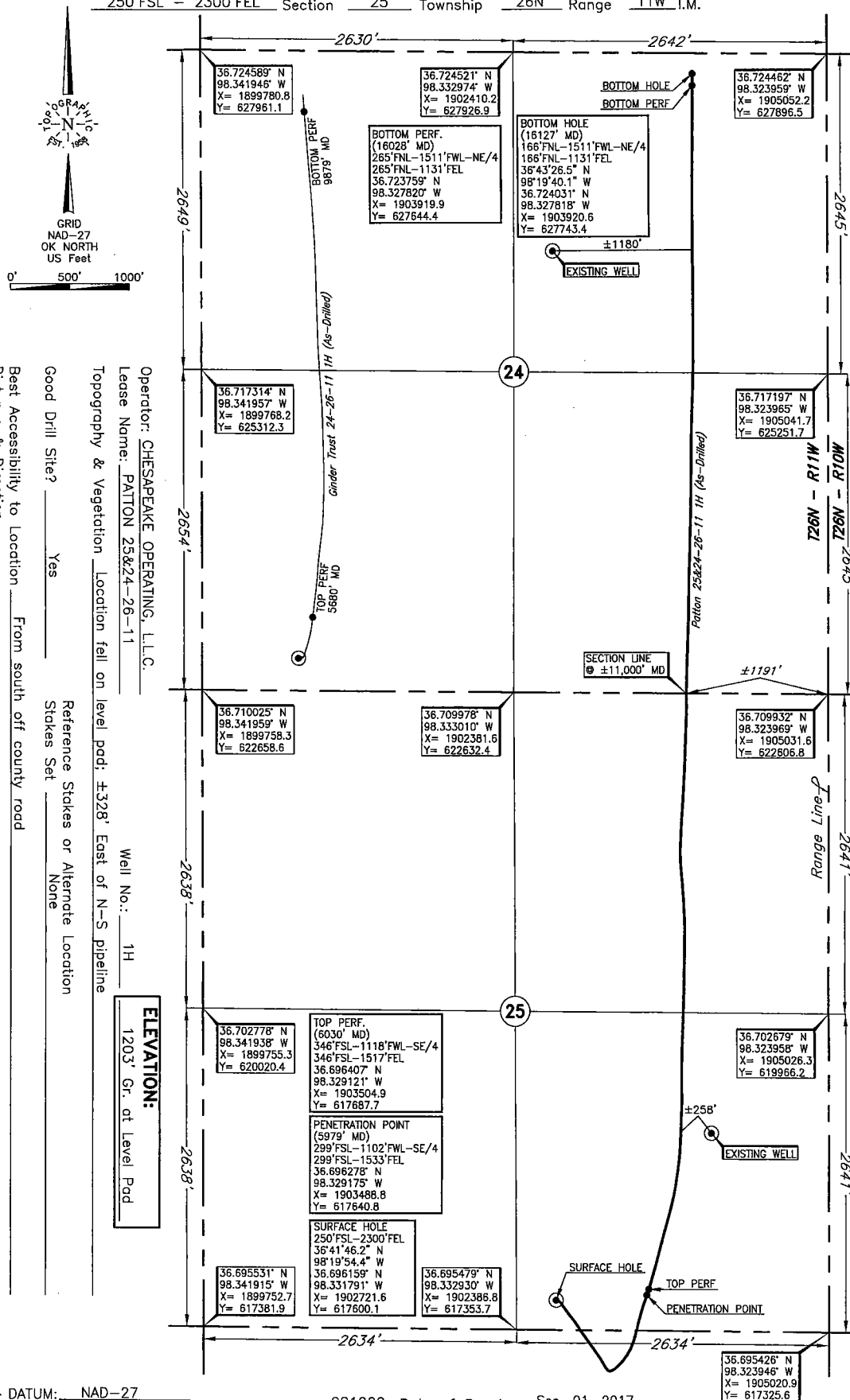
LATERAL #2

SEC	TWP	RGE	COUNTY			
Spot Location				Feet From 1/4 Sec Lines	FSL	FWL
1/4	1/4	1/4	1/4			
Depth of Deviation		Radius of Turn	Direction	Total Length		
Measured Total Depth		True Vertical Depth	BHL From Lease, Unit, or Property Line:			

LATERAL #3

SEC	TWP	RGE	COUNTY			
Spot Location				Feet From 1/4 Sec Lines	FSL	FWL
1/4	1/4	1/4	1/4			
Depth of Deviation		Radius of Turn	Direction	Total Length		
MEASURED Total Depth		True Vertical Depth	BHL From Lease, Unit, or Property Line:			

ALFALFA County, Oklahoma
 250' FSL - 2300' FEL Section 25 Township 26N Range 11W I.M.



Operator: CHESAPEAKE OPERATING, L.L.C.
 Lease Name: PATTON 25&26-26-11
 Topography & Vegetation Location fell on level pad; ±328' East of N-S pipeline
 Good Drill Site? Yes
 Reference Stakes or Alternate Location Stakes Set None
 Best Accessibility to Location From south off county road
 Distance & Direction From Hwy 4ct or Town From Cherokee, Ok, go ±4.0 mi. South on St. Hwy. 58, then ±2.0 mi. East to the SE Cor. of Sec. 25-T26N-R11W.

Well No.: 1H

ELEVATION:
 1203' Gr. at Level Pad

DATUM: NAD-27
 LAT: 36°41'46.2" N
 LONG: 98°19'54.4" W
 LAT: 36.696159° N
 LONG: 98.331791° W
 STATE PLANE
 COORDINATES: (US Feet)
 ZONE: OK NORTH
 X: 1902721.6
 Y: 617600.1

281020 Date of Drawing: Sep. 01, 2017
 Invoice # 268920 Date Staked: December 8, 2016 JP

FINAL AS-DRILLED PLAT

AS-DRILLED INFORMATION
 FURNISHED BY CHESAPEAKE OPERATING, L.L.C.