

Oklahoma Corporation Commission  
Oil & Gas Conservation Division  
Post Office Box 52000  
Oklahoma City, Oklahoma 73152-2000  
Rule 165: 10-3-25

Form 1002A

API No.: 35011237760001

**Completion Report**

Spud Date: August 01, 2017

OTC Prod. Unit No.:

Drilling Finished Date: August 11, 2017

1st Prod Date:

Completion Date: August 30, 2017

**Drill Type: STRAIGHT HOLE**

**SERVICE WELL**

Well Name: SLO-POKE SWD 1

Purchaser/Measurer:

Location: BLAINE 33 18N 12W  
C SE SE SE  
330 FSL 330 FEL of 1/4 SEC  
Latitude: 35.986046634 Longitude: -98.477064391  
Derrick Elevation: 17 Ground Elevation: 1660

First Sales Date:

Operator: CARRERA ENERGY LLC 23514  
PO BOX 5036  
901 W MISSOURI AVE  
MIDLAND, TX 79704-5036

Completion Type	Location Exception	Increased Density
Single Zone	Order No	Order No
Multiple Zone	There are no Location Exception records to display.	There are no Increased Density records to display.
Commingled		

Casing and Cement							
Type	Size	Weight	Grade	Feet	PSI	SAX	Top of CMT
CONDUCTOR	16			40			GROUT
SURFACE	9.626	36	J-55	521		210	SURFACE
PRODUCTION	7.0	26	HCL-80	6841		1295	2676

Liner								
Type	Size	Weight	Grade	Length	PSI	SAX	Top Depth	Bottom Depth
There are no Liner records to display.								

**Total Depth: 6853**

Packer		Plug	
Depth	Brand & Type	Depth	Plug Type
5630	ARROW ASI-X	There are no Plug records to display.	

Initial Test Data
-------------------

Test Date	Formation	Oil BBL/Day	Oil-Gravity (API)	Gas MCF/Day	Gas-Oil Ratio Cu FT/BBL	Water BBL/Day	Pumpin or Flowing	Initial Shut- In Pressure	Choke Size	Flow Tubing Pressure
-----------	-----------	----------------	----------------------	----------------	----------------------------	------------------	----------------------	---------------------------------	---------------	-------------------------

There are no Initial Data records to display.

Completion and Test Data by Producing Formation

Formation Name: VIRGILIAN

Code: 406VRGN

Class: COMM DISP

Spacing Orders		Perforated Intervals	
Order No	Unit Size	From	To
There are no Spacing Order records to display.		5678	6737
Acid Volumes		Fracture Treatments	
25,000 GALLONS 15% HCL		NO FRAC	

Formation	Top
RED CAVE	2400
BROWN DOLOMITE	3250
COTTONWOOD	3420
NEVA	3580
RED EAGLE	3670
WAKARUSA	4350
OREAD	5215
ENDICOTT	5510
LOVELL	5680
DOUGLAS	6220
TONKAWA SAND	6660
TONKAWA HS	6684

Were open hole logs run? Yes

Date last log run: August 09, 2017

Were unusual drilling circumstances encountered? No

Explanation:

Other Remarks

THIS WELL WAS DRILLED TO SERVE AS A COMMERCIAL SWD UNDER UIC PERMIT NUMBER 1708330031. APPROVAL DATE JUNE 13, 2017

FOR COMMISSION USE ONLY

1137886

Status: Accepted

# RECEIVED

Form 1002A  
Rev. 2009

OCT 16 2017

OKLAHOMA CORPORATION COMMISSION

API NO. 35 011 23776  
OTC PROD.  
UNIT NO.

PLEASE TYPE OR USE BLACK INK ONLY  
NOTE:

Attach copy of original 1002A  
if recompletion or reentry.

OKLAHOMA CORPORATION COMMISSION  
Oil & Gas Conservation Division  
Post Office Box 52000  
Oklahoma City, Oklahoma 73152-2000  
Rule 165:10-3-25

☒ ORIGINAL  
☐ AMENDED (Reason)

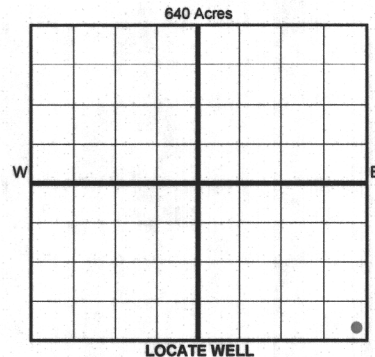
## COMPLETION REPORT

TYPE OF DRILLING OPERATION  
☒ STRAIGHT HOLE ☐ DIRECTIONAL HOLE ☐ HORIZONTAL HOLE  
☒ SERVICE WELL  
If directional or horizontal, see reverse for bottom hole location.

SPUD DATE 8-1-2017  
DRLG FINISHED DATE 8-11-2017  
DATE OF WELL COMPLETION 8-30-2017  
1st PROD DATE  
RECOMP DATE

COUNTY Blaine SEC 33 TWP 18N RGE 12W  
LEASE NAME Slo Poke SWD  
C 1/4 SE 1/4 SE 1/4 SE 1/4 FSL OF 1/4 SEC 330 FEL OF 1/4 SEC 330  
ELEVATION 17 Ground 1660  
Derrick FL Latitude (if known) 35.986046634N Longitude (if known) 98.477064391W

OPERATOR NAME Carrera Energy, LLC OTC/OCC OPERATOR NO. 23515  
ADDRESS 901 Missouri  
CITY Midland STATE Texas ZIP 79701



## COMPLETION TYPE

SINGLE ZONE  
MULTIPLE ZONE  
Application Date  
COMMINGLED  
Application Date  
LOCATION  
EXCEPTION ORDER  
INCREASED DENSITY  
ORDER NO

## CASING & CEMENT (Form 1002C must be attached)

TYPE	SIZE	WEIGHT	GRADE	FEET	PSI	SAX	TOP OF CMT
CONDUCTOR	16			40			Grout
SURFACE	9.626	36	J-55	521		210	Surface
INTERMEDIATE							
PRODUCTION	7.0	26	HCL80	6841		1295	2676 CBL
LINER							
TOTAL DEPTH						6853	

PACKER @ 5630 BRAND & TYPE Arrow ASI-X PLUG @ TYPE PLUG @ TYPE  
PACKER @ BRAND & TYPE PLUG @ TYPE PLUG @ TYPE

## COMPLETION & TEST DATA BY PRODUCING FORMATION

FORMATION	SPACING & SPACING ORDER NUMBER	CLASS: Oil, Gas, Dry, Inj, Disp, Comm Disp, Svc	PERFORATED INTERVALS	ACID/VOLUME	FRACTURE TREATMENT (Fluids/Prop Amounts)
Virgilian					No Frac
Commercial Disposal					
Upr Lovell 5738-48; 5716-34; 5690-704; 5678-85					
Lwr Lovell 5832-60; 5796-5826					
Douglas 6220-32; 6164-78					
Tonkawa Perfs 6720-37; 6704-10; 6698-702; 6682-94					
25,000 gals 15% HCL					
No Frac					

Min Gas Allowable (165:10-17-7) Gas Purchaser/Measurer  
OR  
Oil Allowable (165:10-13-3) First Sales Date

## INITIAL TEST DATA

INITIAL TEST DATE	
OIL-BBL/DAY	
OIL-GRAVITY ( API)	
GAS-MCF/DAY	
GAS-OIL RATIO CU FT/BBL	
WATER-BBL/DAY	
PUMPING OR FLOWING	
INITIAL SHUT-IN PRESSURE	
CHOKE SIZE	
FLOW TUBING PRESSURE	

AS SUBMITTED

A record of the formations drilled through, and pertinent remarks are presented on the reverse. I declare that I have knowledge of the contents of this report and am authorized by my organization to make this report, which was prepared by me or under my supervision and direction, with the data and facts stated herein to be true, correct, and complete to the best of my knowledge and belief.

Richard L. Wright Richard L. Wright 10-15-2017 432 695 6970  
SIGNATURE NAME (PRINT OR TYPE) DATE PHONE NUMBER  
901 Missouri, Midland, Texas 79701  
ADDRESS CITY STATE ZIP EMAIL ADDRESS rwright@carreraenergy.com

PLEASE TYPE OR USE BLACK INK ONLY

FORMATION RECORD

Give formation names and tops, if available, or descriptions and thickness of formations drilled through. Show intervals cored or drillstem tested.

NAMES OF FORMATIONS	TOP
Red Cave	2400
Brown Dolomite	3250
Cottonwood	3420
Neva	3580
Red Eagle	3670
Wakarusa	4350
Oread	5215
Endicott	5510
Lovell	5680
Douglas	6220
Tonkawa HS	6684
Tonkawa Sand	6660

LEASE NAME Slo Poke SWD

WELL NO. #1

FOR COMMISSION USE ONLY	
ITD on file <input type="checkbox"/> YES <input type="checkbox"/> NO	
APPROVED _____	DISAPPROVED _____
2) Reject Codes	
_____	
_____	
_____	
_____	

Were open hole logs run?	<u>X</u> yes <u>  </u> no
Date Last log was run	<u>August 9th 2017</u>
Was CO <sub>2</sub> encountered?	<u>  </u> yes <u>X</u> no at what depths? _____
Was H <sub>2</sub> S encountered?	<u>  </u> yes <u>X</u> no at what depths? _____
Were unusual drilling circumstances encountered?	<u>  </u> yes <u>X</u> no
If yes, briefly explain below	

Other remarks:

This well was drilled to serve as a commercial SWD under UIC permit # 1708330031. Approval date 6-13-17

640 Acres


If more than three drainholes are proposed, attach a separate sheet indicating the necessary information.

Direction must be stated in degrees azimuth. Please note, the horizontal drainhole and its end point must be located within the boundaries of the lease or spacing unit.

Directional surveys are required for all drainholes and directional wells.

640 Acres


BOTTOM HOLE LOCATION FOR DIRECTIONAL HOLE

SEC	TWP	RGE	COUNTY
Spot Location			
1/4	1/4	1/4	1/4
Measured Total Depth		True Vertical Depth	BHL From Lease, Unit, or Property Line:

BOTTOM HOLE LOCATION FOR HORIZONTAL HOLE: (LATERALS)

LATERAL #1

SEC	TWP	RGE	COUNTY
Spot Location			
1/4	1/4	1/4	1/4
Depth of Deviation		Radius of Turn	Direction
			Total Length
Measured Total Depth		True Vertical Depth	BHL From Lease, Unit, or Property Line:

LATERAL #2

SEC	TWP	RGE	COUNTY
Spot Location			
1/4	1/4	1/4	1/4
Depth of Deviation		Radius of Turn	Direction
			Total Length
Measured Total Depth		True Vertical Depth	BHL From Lease, Unit, or Property Line:

LATERAL #3

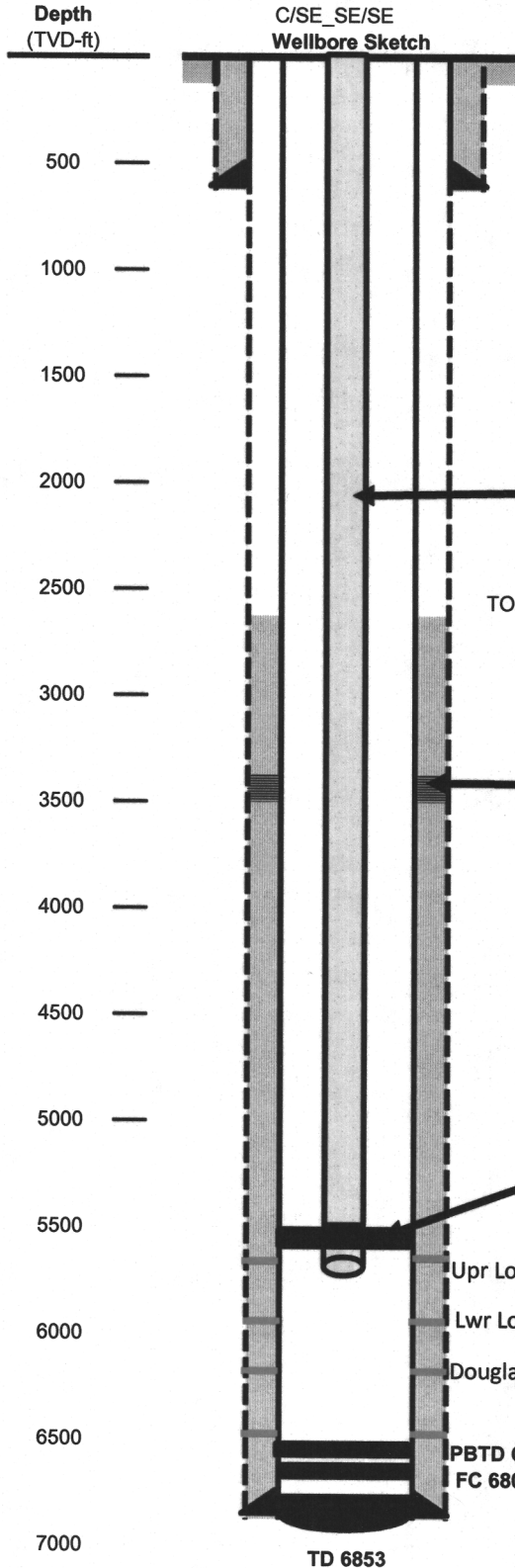
SEC	TWP	RGE	COUNTY
Spot Location			
1/4	1/4	1/4	1/4
Depth of Deviation		Radius of Turn	Direction
			Total Length
Measured Total Depth		True Vertical Depth	BHL From Lease, Unit, or Property Line:

# Slo Poke SWD

Location: **Section 33\_T18N\_R12W\_Blaine County, Oklahoma**

API #35 011 23776 UIC # 1708330031 (15,000 bbls 2500 psi)

330 FSL & 330 FEL, Elev 1660 GR, 17 KB



12.25" hole x 9.625" 36 # J-55 @ 521 ft. Cmt'd  
9.625" Csg w/95 sks 11.5 ppg 2.814 yield.  
Tailed w/ 115 sks Swift Cem mixed 14.8 ppg  
1.332 yield. Cmt did not circulate. TS showed  
300' fs. Run 260' 1". Cmt w/ 32 bbls C neat.  
Circulated 5 bbls cmt. (21 sks)

174 jts 3-1/2" 9.3# J-55 IPC tubing. 6', 4'  
& 2' IPC pups below slick jt

TOC 2676 CBL 8-22-17

7.0" HES Stage Tool @ 3555 ft  
Sqz stge tool w/ 300 sks "C" 1.32 yield 14.8  
ppg. Final sz pressure 1150 psi. Drill out &  
pressure test to 2000 psi. Okay

AS1-X Nickel coated packer set @ 5630.  
on/off tool @ 5621'. SS Seal nipple @ 5629

Upr Lovell Perfs-5738-48; 5716-34; 5690-704; 5678-85

Lwr Lovell Perfs-5832-60; 5796-26

Douglas Perfs-6220-32; 6164-78

PBTD CIBP 6750 ft  
FC 6803.

TD 6853

Acidize Perfs (6737-5685) 1032 holes w/  
25,000 gals 15% HCL using rock salt for  
diversion. AIR 13.7 bpm @ 2,837 psi. ISIP  
676 psi. 5 min 616 psi. 10 min 593 psi. 15  
min 570 psi.

7.0" 26# HCL-80 LTC Csg set @ 6841'. Cmt'd 1st stage w/ 215 sks  
12.4 ppg Extendacem 2.076 yield. Tailed w/ 300 sks Econocem  
13.5 ppg 1.566 yield. Open tool @ 3410'. Circ. Cmt 2nd stage w/  
300 sks 12.4 ppg Extendacem w/ 2.076 yield. Tailed w/ 180 sks  
14.8 ppg HalCem w/ 1.324 yield. Tool not closed. TOC 2676 CBL  
8-22-17.