

Oklahoma Corporation Commission
Oil & Gas Conservation Division
Post Office Box 52000
Oklahoma City, Oklahoma 73152-2000
Rule 165: 10-3-25

Form 1002A

API No.: 35133221270001

Completion Report

Spud Date: September 17, 1982

OTC Prod. Unit No.:

Drilling Finished Date: October 11, 1982

Amended

1st Prod Date:

Amend Reason: CORRECT FOOTAGE / CHANGE OPERATOR / CHANGE DISPOSAL ZONE

Completion Date: April 07, 1983

Recomplete Date: September 11, 2017

Drill Type: STRAIGHT HOLE

SERVICE WELL

Well Name: REED 3 TWIN SWD

Purchaser/Measurer:

Location: SEMINOLE 28 10N 8E
SE NW SW SW
792 FSL 339 FWL of 1/4 SEC
Derrick Elevation: 996 Ground Elevation: 959

First Sales Date:

Operator: LATIGO DRILLING CORPORATION 19522
PO BOX 2150
922 W WILLOW
DUNCAN, OK 73534-2150

Completion Type		Location Exception		Increased Density	
X	Single Zone	Order No		Order No	
	Multiple Zone	There are no Location Exception records to display.		There are no Increased Density records to display.	
	Commingled				

Casing and Cement							
Type	Size	Weight	Grade	Feet	PSI	SAX	Top of CMT
SURFACE	10 3/4	32.75	H-55	123			SURFACE
PRODUCTION	7	26	H-55	4860			3060

Liner								
Type	Size	Weight	Grade	Length	PSI	SAX	Top Depth	Bottom Depth
There are no Liner records to display.								

Total Depth: 5930

Packer		Plug	
Depth	Brand & Type	Depth	Plug Type
4360	TENSION	4740	CIBP

Initial Test Data

Test Date	Formation	Oil BBL/Day	Oil-Gravity (API)	Gas MCF/Day	Gas-Oil Ratio Cu FT/BBL	Water BBL/Day	Pumpin or Flowing	Initial Shut- In Pressure	Choke Size	Flow Tubing Pressure
There are no Initial Data records to display.										
Completion and Test Data by Producing Formation										
Formation Name: 2ND WILCOX Code: 202WLCX2 Class: DISP										
Spacing Orders				Perforated Intervals						
Order No		Unit Size		From			To			
There are no Spacing Order records to display.				4418			4574			
Acid Volumes				Fracture Treatments						
NO ACID				NO FRAC						

Formation	Top	Were open hole logs run? Yes Date last log run: October 11, 1982 Were unusual drilling circumstances encountered? No Explanation:
WOODFORD SHALE	4010	
HUNTON LIME	4058	
SHALE	4138	
VIOLA	4228	
DENSE	4298	
1ST WILCOX	4312	
SHALE	4394	
2ND WILCOX	4406	
SAND AND SHALE	4494	
ARBUCKLE	4834	

Other Remarks
OCC - UIC PERMIT NUMBER 1703760048. ORIGINAL 1002A SHOWS DV TOOL AT 650' AND CEMENT TO SURFACE.

FOR COMMISSION USE ONLY	
Status: Accepted	1137903

API NO. 13322127
OTC PROD.
UNIT NO.

PLEASE TYPE OR USE BLACK INK ONLY
NOTE:

Attach copy of original 1002A
if recompletion or reentry.

OKLAHOMA CORPORATION COMMISSION
Oil & Gas Conservation Division
Post Office Box 52000
Oklahoma City, Oklahoma 73152-2000
Rule 165:10-3-25

RECEIVED

SEP 27 2017

Form 1002A
Rev. 2009

OKLAHOMA CORPORATION
COMMISSION

☐ ORIGINAL
☒ AMENDED (Reason)

Correct footage/change operator

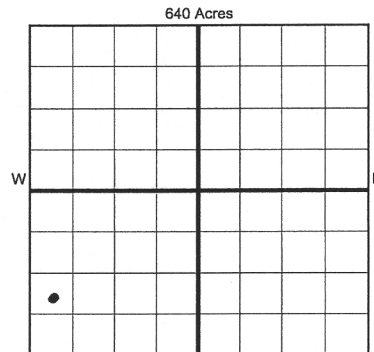
COMPLETION REPORT

TYPE OF DRILLING OPERATION
☒ STRAIGHT HOLE ☐ DIRECTIONAL HOLE ☐ HORIZONTAL HOLE
☒ SERVICE WELL

If directional or horizontal, see reverse for bottom hole location.

SPUD DATE 9/17/82
DRLG FINISHED DATE 10/11/82
DATE OF WELL COMPLETION 4-7-1983
RECOMP DATE 9/11/17
OTC/OCC OPERATOR NO. 19522

COUNTY Seminole SEC 28 TWP 10N RGE 8E
LEASE NAME Reed
WELL NO. 3 Twin
NW 1/4 SW 1/4 SW 1/4 1/4 FSL OF 1/4 SEC 792 FWL OF 1/4 SEC 339
ELEVATION N Derrick 996 Ground 959 Latitude (if known) Longitude (if known)
OPERATOR NAME Latigo Drilling Corporation
ADDRESS PO Box 2150
CITY Duncan STATE OK ZIP 73055



COMPLETION TYPE

☒ SINGLE ZONE
☐ MULTIPLE ZONE
Application Date
☐ COMMINGLED
Application Date
LOCATION
EXCEPTION ORDER
INCREASED DENSITY
ORDER NO.

CASING & CEMENT (Form 1002C must be attached)

TYPE	SIZE	WEIGHT	GRADE	FEET	PSI	SAX	TOP OF CMT
CONDUCTOR							
SURFACE	10 3/4	32.75	H-55	123		NA	Surface
INTERMEDIATE			DV tool 650'				surface
PRODUCTION	7	26	H-55	4860		NA	3060
LINER							

PACKER @ 4360 BRAND & TYPE Tension
PACKER @ BRAND & TYPE

PLUG @ 4740 TYPE CIBP
PLUG @ TYPE
PLUG @ TYPE

TOTAL DEPTH 5930

COMPLETION & TEST DATA BY PRODUCING FORMATION

FORMATION	2nd Willcox				
SPACING & SPACING ORDER NUMBER	NA				
CLASS: Oil, Gas, Dry, Inj, Disp, Comm Disp, Svc	Disposal	Permit #	1703760048	See remarks	
PERFORATED INTERVALS	4418-4460				
	4540-48				
	4562-74				
ACID/VOLUME	No Acid				
FRACTURE TREATMENT (Fluids/Prop Amounts)	No Frac				

Min Gas Allowable (165:10-17-7)

Gas Purchaser/Measurer

INITIAL TEST DATA

Oil Allowable (165:10-13-3)

First Sales Date

INITIAL TEST DATE					
OIL-BBL/DAY					
OIL-GRAVITY (API)					
GAS-MCF/DAY					
GAS-OIL RATIO CU FT/BBL					
WATER-BBL/DAY					
PUMPING OR FLOWING					
INITIAL SHUT-IN PRESSURE					
CHOKE SIZE					
FLOW TUBING PRESSURE					

AS SUBMITTED

A record of the formations drilled through, and pertinent remarks are presented on the reverse. I declare that I have knowledge of the contents of this report and am authorized by my organization to make this report, which was prepared by me or under my supervision and direction, with the data and facts stated herein to be true, correct, and complete to the best of my knowledge and belief.

SIGNATURE

David K. Moore
NAME (PRINT OR TYPE)

9/25/17 5802551674
DATE PHONE NUMBER

PO Box 2150

Duncan
CITY

OK 73055
STATE ZIP

latigodrilling@yahoo.com
EMAIL ADDRESS

FORMATION RECORD

WELL NO. 3 Twin

NAMES OF FORMATIONS	TOP
Woodford Shale	4010
Hunton Lime	4058
Shale	4138
Viola	4228
Dense	4298
1st Wilcox	4312
Shale	4394
2nd Wilcox	4406
Sand & Shale	4494
Arbuckle	4834

FOR COMMISSION USE ONLY	
ITD on file	<input type="checkbox"/> YES <input type="checkbox"/> NO
APPROVED	DISAPPROVED
2) Reject Codes _____ _____ _____ _____ _____	

Were open hole logs run? X yes no

Date Last log was run ~~10/82~~ 10-11-82

Was CO₂ encountered? yes X no at what depths?

Was H₂S encountered? yes X no at what depths?

Were unusual drilling circumstances encountered? yes X no

If yes, briefly explain below

Other remarks: OCC-UIC permit #1703760048
OCC-original 1002A shows DV tool at 650' and cement to surface

Direction must be stated in degrees azimuth.
Please note, the horizontal drainhole and its end point must be located within the boundaries of the lease or spacing unit.

640 Acres

SEC	TWP	RGE	COUNTY
Spot Location			
1/4	1/4	1/4	1/4
Measured Total Depth		True Vertical Depth	Feet From 1/4 Sec Lines
			FSL
		FWL	
BHL From Lease, Unit, or Property Line:			

SEC	TWP	RGE	COUNTY		
Spot Location		Feet From 1/4 Sec Lines		FSL	FWL
1/4	1/4	1/4	1/4		
Depth of Deviation	Radius of Turn		Direction	Total Length	
Measured Total Depth		True Vertical Depth	BHL From Lease, Unit, or Property Line:		

SEC	TWP	RGE	COUNTY		
Spot Location		Feet From 1/4 Sec Lines		FSL	FWL
1/4	1/4	1/4	1/4		
Depth of Deviation		Radius of Turn	Direction	Total Length	
Measured Total Depth		True Vertical Depth	BHL From Lease, Unit, or Property Line:		

SEC	TWP	RGE	COUNTY
Spot Location			
1/4	1/4	1/4	1/4
Feet From 1/4 Sec Lines		FSL	FWL
Depth of Deviation	Radius of Turn	Direction	Total Length
Measured Total Depth	True Vertical Depth	BHL From Lease, Unit, or Property Line:	