

Oklahoma Corporation Commission
Oil & Gas Conservation Division
Post Office Box 52000
Oklahoma City, Oklahoma 73152-2000
Rule 165: 10-3-25

Form 1002A

API No.: 35003230580001

Completion Report

Spud Date: October 04, 2014

OTC Prod. Unit No.: 003-215238

Drilling Finished Date: October 25, 2014

1st Prod Date: December 08, 2014

Amended

Completion Date: November 16, 2014

Amend Reason: RECLASSIFY AS GAS WELL

Drill Type: HORIZONTAL HOLE

Well Name: KOST TRUST 31-25-11 1H

Purchaser/Measurer:

Location: ALFALFA 31 25N 11W
NW NW NW NW
230 FNL 300 FWL of 1/4 SEC
Derrick Elevation: 1367 Ground Elevation: 1352

First Sales Date:

Operator: CHESAPEAKE OPERATING LLC 17441
PO BOX 18496
6100 N WESTERN AVE
OKLAHOMA CITY, OK 73154-0496

Completion Type		Location Exception		Increased Density	
X	Single Zone	Order No		Order No	
	Multiple Zone	636388		628662	
	Commingled				

Casing and Cement							
Type	Size	Weight	Grade	Feet	PSI	SAX	Top of CMT
SURFACE	13 3/8	48	H-40	418		280	SURFACE
INTERMEDIATE	9 5/8	36	J-55	1204		365	SURFACE
PRODUCTION	7	26	P-110EC	6590		385	4286

Liner								
Type	Size	Weight	Grade	Length	PSI	SAX	Top Depth	Bottom Depth
LINER	4 1/2	11.60	P-110EC	4704	0	495	6124	10828

Total Depth: 10830

Packer		Plug	
Depth	Brand & Type	Depth	Plug Type
6079	AS-3	There are no Plug records to display.	

Initial Test Data

Test Date	Formation	Oil BBL/Day	Oil-Gravity (API)	Gas MCF/Day	Gas-Oil Ratio Cu FT/BBL	Water BBL/Day	Pumpin or Flowing	Initial Shut-In Pressure	Choke Size	Flow Tubing Pressure
Jul 06, 2017	MISSISSIPPIAN	8	34.64	214	26750	595	ARTIFICIA			108

Completion and Test Data by Producing Formation	
Formation Name: MISSISSIPPIAN	Code: 359MSSP
Class: GAS	

Spacing Orders	
Order No	Unit Size
93336	640

Perforated Intervals	
From	To
6476	10692

Acid Volumes	
There are no Acid Volume records to display.	

Fracture Treatments	
There are no Fracture Treatments records to display.	

Formation	Top
MISSISSIPPIAN	6417

Were open hole logs run? No

Date last log run:

Were unusual drilling circumstances encountered? No

Explanation:

Other Remarks
There are no Other Remarks.

Lateral Holes
Sec: 31 TWP: 25N RGE: 11W County: ALFALFA SE SW SW SW 184 FSL 647 FWL of 1/4 SEC Depth of Deviation: 5626 Radius of Turn: 567 Direction: 182 Total Length: 4413 Measured Total Depth: 10830 True Vertical Depth: 6193 End Pt. Location From Release, Unit or Property Line: 184

FOR COMMISSION USE ONLY	
Status: Accepted	1137894

API NO. 35-003-23058
OTC PROD.
UNIT NO. 003-215238

PLEASE TYPE OR USE BLACK INK ONLY

NOTE:

Attach copy of original 1002A if recompletion or reentry.

OKLAHOMA CORPORATION COMMISSION

Oil & Gas Conservation Division

Post Office Box 52000

Oklahoma City, Oklahoma 73152-2000

Rule 165:10-3-25

Form 1002A

Rev. 2009

RECEIVED

OCT 13 2017

☐ ORIGINAL
☒ AMENDED

Reason Amended *Reclassify as gas well*

TYPE OF DRILLING OPERATION

☐ STRAIGHT HOLE ☐ DIRECTIONAL HOLE ☒ HORIZONTAL HOLE
SERVICE WELL

If directional or horizontal, see reverse for bottom hole location.

COUNTY ALFALFA SEC 31 TWP 25N RGE 11W

LEASE NAME KOST TRUST 31-25-11

SHL NW 1/4 NW 1/4 NW 1/4 NW 1/4 **FNL** 230

ELEVATION Derrick Fl 1,367 Ground 1,352

OPERATOR NAME CHESAPEAKE OPERATING, L.L.C.

OTC/OCC OPERATOR NO. 17441

ADDRESS P.O. BOX 18496

CITY OKLAHOMA CITY

STATE OK

ZIP 73154

COMPLETION REPORT

SPUD DATE 10/4/2014

DRLG FINISHED DATE 10/25/2014

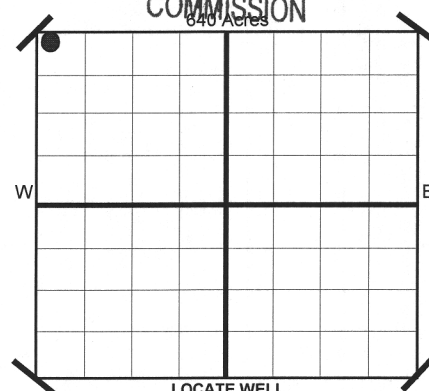
DATE OF WELL COMPLETION 11/16/2014

1ST PROD DATE 12/8/2014

RECOMP DATE

Longitude

(if Known)



COMPLETION TYPE

<input checked="" type="checkbox"/>	SINGLE ZONE
<input type="checkbox"/>	MULTIPLE ZONE
<input type="checkbox"/>	Application Date
<input type="checkbox"/>	COMINGLED
<input type="checkbox"/>	Application Date
LOCATION EXCEPTION ORDER NO. 636388 (F.O.)	
INCREASED DENSITY ORDER NO. 628662	

CASING & CEMENT (Form 1002C must be attached)

TYPE	SIZE	WEIGHT	GRADE	FEET	PSI	SAX	TOP
CONDUCTOR							
SURFACE	13 3/8"	48#	H-40	418		280	SURFACE
INTERMEDIATE I	9 5/8"	36#	J-55	1,204		365	SURFACE
PRODUCTION	7"	26#	P-110EC	6,590		385	4,286
LINER	4 1/2"	11.60#	P-110EC	6,124-10,828		495	6,124

PACKER @ 6,079 BRAND & TYPE AS-3

PACKER @ BRAND & TYPE

PLUG @ TYPE

PLUG @ TYPE

PLUG @ TYPE

PLUG @ TYPE

TOTAL DEPTH 10,830

COMPLETION & TEST DATA BY PRODUCING FORMATION

FORMATION	MISSISSIPPIAN
SPACING & SPACING ORDER NUMBER	640 93336
CLASS: Oil, Gas, Dry, Inj. Disp, Comm Disp, Svc	GAS
PERFORATED INTERVALS	6,476-10,692
ACID/VOLUME	
FRACTURE TREATMENT (Fluids/Prop Amounts)	

Minimum Gas Allowable

(165:10-17-7)

Gas Purchaser/Measurer



OR

1st Sales Date

INITIAL TEST DATA

Oil Allowable

(165:10-13-3)

INITIAL TEST DATE	7/6/2017
OIL-BBL/DAY	8
OIL-GRAVITY (API)	34.64
GAS-MCF/DAY	214
GAS-OIL RATIO CU FT/BBL	26,750
WATER-BBL/DAY	595
PUMPING OR FLOWING	ARTIFICIAL LIFT
INITIAL SHUT-IN PRESSURE	
CHOKE SIZE	
FLOW TUBING PRESSURE	108

AS SUBMITTED

A record of the formations drilled through, and pertinent remarks are presented on the reverse. I declare that I have knowledge of the contents of this report and am authorized by my organization to make this report, which was prepared by me or under my supervision and direction, with the data and facts stated herein to be true, correct, and complete to the best of my knowledge and belief.

JP Powell
SIGNATURE

JP Powell, Regulatory Specialist

10/12/2017

405-848-8000

P.O. BOX 18496
ADDRESS

OKLAHOMA CITY
CITY

OK 73154
STATE ZIP

ip.powell@chk.com
EMAIL ADDRESS

Give formation names and tops, if available, or descriptions and thickness of formations drilled through. Show intervals cored or drillstem tested.

WELL NO. 1H


NAMES OF FORMATIONS	TOP
MISSISSIPPIAN	6,417

FOR COMMISSION USE ONLY	
ITD on file	<input type="checkbox"/> YES <input type="checkbox"/> NO
APPROVED	DISAPPROVED
2) Reject Codes	

Were open hole logs run?	<u> </u> yes <u>X</u> no
Date Last log was run	<u> </u> N/A
Was CO ₂ encountered?	<u> </u> yes <u>X</u> no at what depths?
Was H ₂ S encountered?	<u> </u> yes <u>X</u> no at what depths?
Were unusual drilling circumstances encountered?	<u> </u> yes <u>X</u> no
If yes, briefly explain.	

Other remarks:

640 Acres



If more than three drainholes are proposed, attach a separate sheet indicating the necessary information.

Direction must be stated in degrees azimuth.
Please note, the horizontal drainhole and its end point must be located within the boundaries of the lease or spacing unit.

Directional surveys are required for all drainholes and directional wells.
640 Acres

SEC	TWP	RGE	COUNTY			
Spot Location				Feet From 1/4 Sec Lines	FSL	FWL
1/4	1/4	1/4	1/4			
Measured Total Depth		True Vertical Depth	BHL From Lease, Unit, or Property Line:			

LATERAL #1							
SEC 31	TWP 25N	RGE 11W	COUNTY	ALFALFA			
Spot Location				Feet From 1/4 Sec Lines	FSL 184	FWL 647	
SE 1/4 SW 1/4		SW 1/4 SW 1/4					
Depth of Deviation		Radius of Turn		Direction 182		Total Length 4,413	
Measured Total Depth		True Vertical Depth		BHL From Lease, Unit, or Property Line:			
10,830		6,193		184			

SEC	TWP	RGE	COUNTY			
Spot Location						
1/4	1/4	1/4	1/4	Feet From 1/4 Sec Lines	FSL	FWL
Depth of Deviation		Radius of Turn		Direction	Total Length	
Measured Total Depth		True Vertical Depth		BHL From Lease, Unit, or Property Line:		

SEC	TWP	RGE	COUNTY			
Spot Location				Feet From 1/4 Sec Lines	FSL	FWL
1/4	1/4	1/4	1/4			
Depth of Deviation		Radius of Turn		Direction	Total Length	
Measured Total Depth		True Vertical Depth		BHL From Lease, Unit, or Property Line:		

API NO. 35-003-23058
OTC PROD.
UNIT NO. 003-215238

PLEASE TYPE OR USE BLACK INK ONLY

NOTE:

Attach copy of original 1002A if recompletion or reentry.

OKLAHOMA CORPORATION COMMISSION

Oil & Gas Conservation Division

Post Office Box 52000

Oklahoma City, Oklahoma 73152-2000

Rule 165:10-3-25

RECEIVED

OCT 13 2017

1016EZ

Form 1002A

Rev. 2009

ORIGINAL
☒ AMENDED

Reason Amended *Reclassify as gas well*

TYPE OF DRILLING OPERATION

☐ STRAIGHT HOLE ☐ DIRECTIONAL HOLE ☒ HORIZONTAL HOLE

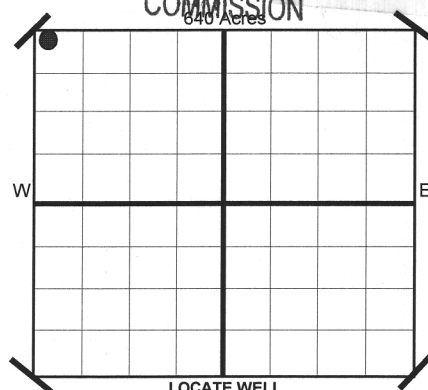
If directional or horizontal, see reverse for bottom hole location.

COUNTY ALFALFA SEC 31 TWP 25N RGE 11W
LEASE NAME KOST TRUST 31-25-11
SHL NW 1/4 NW 1/4 NW 1/4 NW 1/4 230 1/4 SEC 300
ELEVATION
Derrick Fl 1,367 Ground 1,352
OPERATOR NAME CHESAPEAKE OPERATING, L.L.C.
ADDRESS P.O. BOX 18496
CITY OKLAHOMA CITY STATE OK ZIP 73154

COMPLETION REPORT

SPUD DATE 10/4/2014
DRLG FINISHED DATE 10/25/2014
DATE OF WELL COMPLETION 11/16/2014
1ST PROD DATE 12/8/2014
RECOMP DATE
Longitude (if Known)

OKLAHOMA CORPORATION COMMISSION



COMPLETION TYPE

☒ SINGLE ZONE
☐ MULTIPLE ZONE
Application Date
COMMINGLED
Application Date
LOCATION EXCEPTION ORDER NO. 636388 (F.O.)
INCREASED DENSITY ORDER NO. 628662

CASING & CEMENT (Form 1002C must be attached)

TYPE	SIZE	WEIGHT	GRADE	FEET	PSI	SAX	TOP
CONDUCTOR							
SURFACE	13 3/8"	48#	H-40	418		280	SURFACE
INTERMEDIATE I	9 5/8"	36#	J-55	1,204		365	SURFACE
PRODUCTION	7"	26#	P-110EC	6,590		385	4,286
LINER	4 1/2"	11.60#	P-110EC	6,124-10,828		495	6,124
TOTAL DEPTH							10,830

PACKER @ 6.079 BRAND & TYPE AS-3
PACKER @ BRAND & TYPE

PLUG @ TYPE PLUG @ TYPE
PLUG @ TYPE PLUG @ TYPE

COMPLETION & TEST DATA BY PRODUCING FORMATION

FORMATION	MISSISSIPPIAN				
SPACING & SPACING ORDER NUMBER	640 93336				
CLASS: Oil, Gas, Dry, Inj. Disp, Comm Disp, Svc	GAS				
PERFORATED INTERVALS	6,476-10,692				
ACID/VOLUME					
FRACTURE TREATMENT (Fluids/Prop Amounts)					

Minimum Gas Allowable

(165:10-17-7)

Gas Purchaser/Measurer

1st Sales Date

INITIAL TEST DATA

Oil Allowable

(165:10-13-3)

INITIAL TEST DATE	7/6/2017				
OIL-BBL/DAY	8				
OIL-GRAVITY (API)	34.64				
GAS-MCF/DAY	214				
GAS-OIL RATIO CU FT/BBL	26,750				
WATER-BBL/DAY	595				
PUMPING OR FLOWING	ARTIFICIAL LIFT				
INITIAL SHUT-IN PRESSURE					
CHOKE SIZE	1				
FLOW TUBING PRESSURE	108				

AS SUBMITTED

A record of the formations drilled through, and pertinent remarks are presented on the reverse. I declare that I have knowledge of the contents of this report and am authorized by my organization to make this report, which was prepared by me or under my supervision and direction, with the data and facts stated herein to be true, correct, and complete to the best of my knowledge and belief.

SIGNATURE JP Powell, Regulatory Specialist
P.O. BOX 18496 OKLAHOMA CITY OK 73154
ADDRESS CITY STATE ZIP
DATE 10/12/2017
PHONE NUMBER 405-848-8000
EMAIL ADDRESS jp.powell@chk.com

SCANNED

2014: 19,435
2015: 171,470
2016: 42,060