

Oklahoma Corporation Commission
Oil & Gas Conservation Division
Post Office Box 52000
Oklahoma City, Oklahoma 73152-2000
Rule 165: 10-3-25

Form 1002A

API No.: 35043235090001

Completion Report

Spud Date: April 16, 2017

OTC Prod. Unit No.: 043-218988

Drilling Finished Date: May 28, 2017

1st Prod Date: July 14, 2017

Completion Date: July 10, 2017

Drill Type: HORIZONTAL HOLE

Min Gas Allowable: Yes

Well Name: SINCLAIR 14/11-19-18 1H

Purchaser/Measurer: ENABLE

Location: DEWEY 23 19N 18W
NW NE NE NE
300 FNL 620 FEL of 1/4 SEC
Latitude: 36.1146973 Longitude: -99.08143867
Derrick Elevation: 1921 Ground Elevation: 1891

First Sales Date: 07/14/2017

Operator: TAPSTONE ENERGY LLC 23467

100 E MAIN ST
OKLAHOMA CITY, OK 73104-2509

Completion Type		Location Exception		Increased Density	
X	Single Zone	Order No		Order No	
	Multiple Zone	666179		There are no Increased Density records to display.	
	Commingled				

Casing and Cement							
Type	Size	Weight	Grade	Feet	PSI	SAX	Top of CMT
SURFACE	13 3/8	48	H-40	487	670	450	SURFACE
INTERMEDIATE	9 5/8	40	J/L	6900	2250	1220	2500
PRODUCTION	5 1/2	20	P-110	21369	9800	2905	8720

Liner								
Type	Size	Weight	Grade	Length	PSI	SAX	Top Depth	Bottom Depth
There are no Liner records to display.								

Total Depth: 21369

Packer		Plug	
Depth	Brand & Type	Depth	Plug Type
11104	AS1-X	There are no Plug records to display.	

Initial Test Data

Test Date	Formation	Oil BBL/Day	Oil-Gravity (API)	Gas MCF/Day	Gas-Oil Ratio Cu FT/BBL	Water BBL/Day	Pumpin or Flowing	Initial Shut-In Pressure	Choke Size	Flow Tubing Pressure
Oct 09, 2017	MISSISSIPPIAN	229	44	2277	9943	2364	FLOWING		42/64	538

Completion and Test Data by Producing Formation

Formation Name: MISSISSIPPIAN

Code: 359MSSP

Class: OIL

Spacing Orders

Order No	Unit Size
664318	640
665958	MULTIUNIT

Perforated Intervals

From	To
11180	21369

Acid Volumes

102,961 GALLONS 15% HCL

Fracture Treatments

487,789 BARRELS FRAC FLUID, 27,004,786 POUNDS PROPPANT
--

Formation	Top
BASE HEEBNER	6450
BASE DOUGLAS SANDS	6850
TONKAWA	6950
COTTAGE GROVE	7432
HOGSHOOTER	7760
OSWEGO	8205
ATOKA	8892
MISSISSIPPIAN	9594

Were open hole logs run? No

Date last log run:

Were unusual drilling circumstances encountered? No

Explanation:

Other Remarks

OCC - THIS DOCUMENT IS ACCEPTED BASED ON THE DATA SUBMITTED NEITHER THE FINAL LOCATION EXCEPTION NOR THE FINAL MULTIUNIT ORDERS HAVE BEEN ISSUED.

Lateral Holes

Sec: 11 TWP: 19N RGE: 18W County: DEWEY

NE NW NE NE

167 FNL 667 FEL of 1/4 SEC

Depth of Deviation: 10272 Radius of Turn: 1011 Direction: 2 Total Length: 10086

Measured Total Depth: 21369 True Vertical Depth: 10572 End Pt. Location From Release, Unit or Property Line: 167

FOR COMMISSION USE ONLY

1137873

Status: Accepted

API NO. 3504323509
OTC PROD UNIT NO. 043218988

PLEASE TYPE OR USE BLACK INK ONLY
NOTE:

Attach copy of original 1002A
if recompletion or reentry.

OKLAHOMA CORPORATION COMMISSION
Oil & Gas Conservation Division
Post Office Box 52000
Oklahoma City, Oklahoma 73152-2000
Rule 165:10-3-25

RECEIVED

OCT 12 2017

Form 1002A
Rev. 2009

OKLAHOMA CORPORATION
COMMISSION

☒ ORIGINAL
☐ AMENDED (Reason)

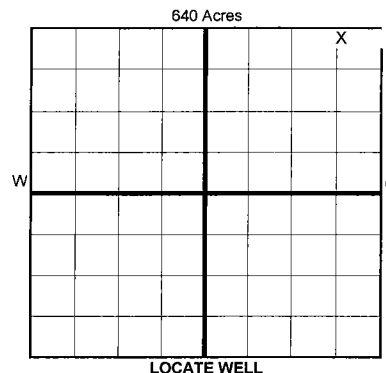
COMPLETION REPORT

TYPE OF DRILLING OPERATION

☐ STRAIGHT HOLE ☐ DIRECTIONAL HOLE ☒ HORIZONTAL HOLE
☐ SERVICE WELL

If directional or horizontal, see reverse for bottom hole location.

COUNTY	DEWEY	SEC	23	TWP	19N	RGE	18W		
LEASE NAME	SINCLAIR 14/11-19-18						WELL NO.	1H	
NW 1/4	NE 1/4	NE 1/4	NE 1/4	FNL OF 1/4 SEC	300'	FEL OF 1/4 SEC	620'		
ELEVATION N Derrick	1,921	Ground	1,891	Latitude (if known)	36.1146973			Longitude (if known)	-99.08143867
OPERATOR NAME	Tapstone Energy, LLC						OTC/OCC OPERATOR NO.	23467	
ADDRESS	PO Box 1608								
CITY	Oklahoma City			STATE	OK	ZIP	73101-1608		



COMPLETION TYPE

<input checked="" type="checkbox"/> SINGLE ZONE	← X
<input type="checkbox"/> MULTIPLE ZONE	
<input type="checkbox"/> COMMINGLED	
LOCATION	666179 - Interim
EXCEPTION ORDER	
INCREASED DENSITY ORDER NO.	

CASING & CEMENT (Form 1002C must be attached)

TYPE	SIZE	WEIGHT	GRADE	FEET	PSI	SAX	TOP OF CMT
CONDUCTOR							
SURFACE	13 3/8"	48	H-40	487'	670	450	SURFACE
INTERMEDIATE	9 5/8"	40	J/L	6,900'	2,250	1,220	2,500' EST
PRODUCTION	5 1/2"	20	P-110	21,369'	9,800	2,047 2,905	8,720' EST
LINER							

PACKER @ 11,104' BRAND & TYPE AS1-X PLUG @ TYPE PLUG @ TYPE
PACKER @ BRAND & TYPE PLUG @ TYPE PLUG @ TYPE

TOTAL DEPTH 21,369'

COMPLETION & TEST DATA BY PRODUCING FORMATION

FORMATION	MISSISSIPPIAN						
SPACING & SPACING ORDER NUMBER	640 ac. - 664318	359MSSP					
CLASS: Oil, Gas, Dry, Inj, Disp, Comm Disp, Svc	OIL	665958 (Multiunit)					
PERFORATED INTERVALS	11,180' - 21,369'						
ACID/VOLUME	102,961 gal 15%HCL						
FRACTURE TREATMENT (Fluids/Prop Amounts)	487,789 BBLS						
	27,004,786# PROP						

Reported to
Frac Focus

☒ Min Gas Allowable (165:10-17-7)
OR
Oil Allowable (165:10-13-3)

Gas Purchaser/Measurer
First Sales Date

ENABLE
7/14/2017

INITIAL TEST DATA

INITIAL TEST DATE	10/9/2017					
OIL-BBL/DAY	229					
OIL-GRAVITY (API)	44					
GAS-MCF/DAY	2277					
GAS-OIL RATIO CU FT/BBL	9,943					
WATER-BBL/DAY	2364					
PUMPING OR FLOWING	FLOWING					
INITIAL SHUT-IN PRESSURE						
CHOKE SIZE	42/64					
FLOW TUBING PRESSURE	538					

AS SUBMITTED

A record of the formations drilled through, and pertinent remarks are presented on the reverse. I declare that I have knowledge of the contents of this report and am authorized by my organization to make this report, which was prepared by me or under my supervision and direction, with the data and facts stated herein to be true, correct, and complete to the best of my knowledge and belief.

SIGNATURE

PO Box 1608

ADDRESS

Bryan Rother

NAME (PRINT OR TYPE)

Oklahoma City OK 73101-1608

CITY

STATE

ZIP

DATE

brother@tapstoneenergy.com

EMAIL ADDRESS

405-702-1600

PHONE NUMBER

Give formation names and tops, if available, or descriptions and thickness of formations drilled through. Show intervals cored or drillstem tested.

WELL NO. 1H

FOR COMMISSION USE ONLY	
ITD on file	<input type="checkbox"/> YES <input type="checkbox"/> NO
APPROVED	DISAPPROVED
<div>2) Reject Codes</div> <div> <div></div> <div></div> <div></div> <div></div> <div></div> </div>	

Were open hole logs run? ___ yes X no

Date Last log was run _____

Was CO₂ encountered? ___ yes X no at what depths? _____

Was H₂S encountered? ___ yes X no at what depths? _____

Were unusual drilling circumstances encountered? ___ yes X no
If yes, briefly explain below

Other remarks:

BOTTOM HOLE LOCATION FOR DIRECTIONAL HOLE

BOTTOM HOLE LOCATION FOR HORIZONTAL HOLE: (LATERALS)

LATERAL #1

LATERAL #2

LATERAL #3

SEC	TWP	RGE	COUNTY			
Spot Location			Feet From 1/4 Sec Lines		FSL	FWL
1/4	1/4	1/4	1/4			
Depth of Deviation		Radius of Turn		Direction	Total Length	
Measured Total Depth		True Vertical Depth		BHL From Lease, Unit, or Property Line:		

If more than three drainholes are proposed, attach a separate sheet indicating the necessary information.

Direction must be stated in degrees azimuth.
Please note, the horizontal drainhole and its end point must be located within the boundaries of the lease or spacing unit.

Directional surveys are required for all drainholes and directional wells.

640 Acres

A 10x10 grid representing 640 acres. The grid is divided into four 5x5 quadrants by a thick black cross. The top-left quadrant is shaded gray. The text '640 Acres' is centered at the top of the grid.

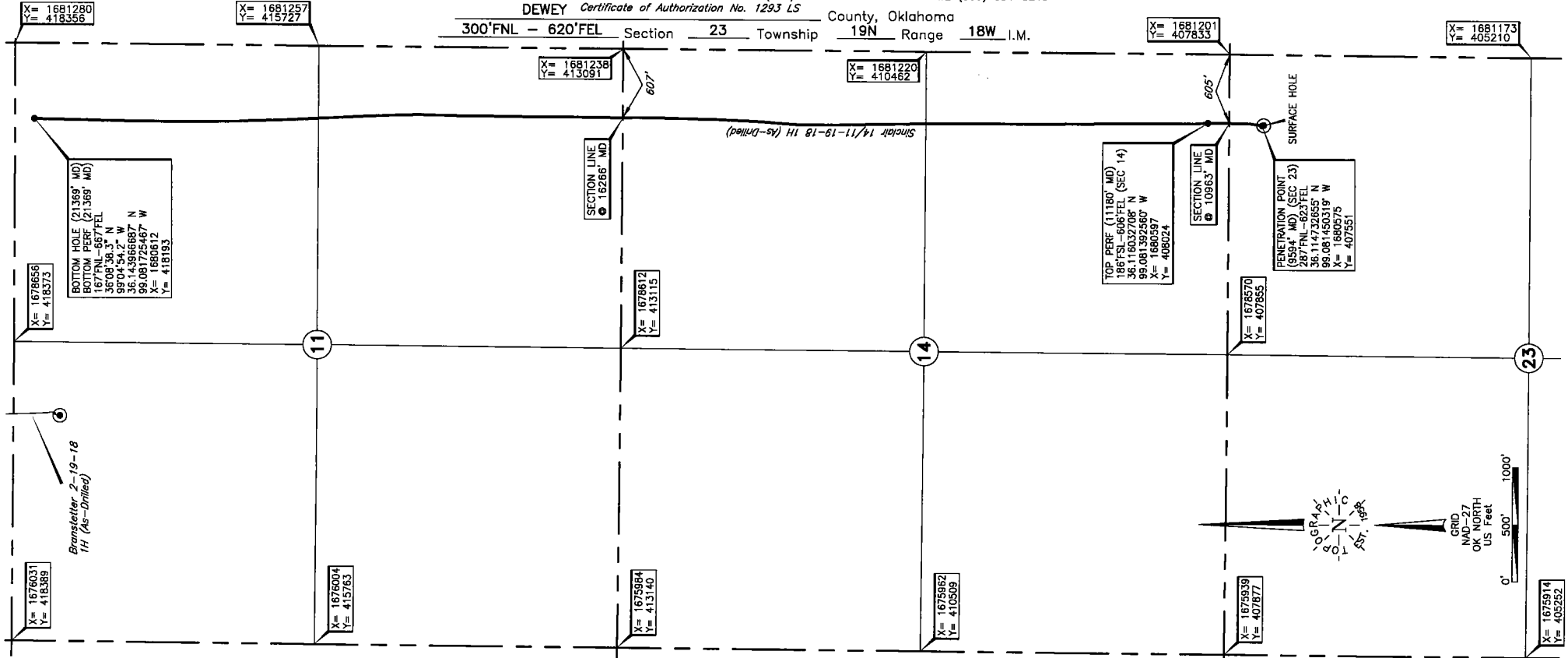
TOPOGRAPHIC LAND SURVEYORS OF OKLAHOMA

6709 NORTH CLASSEN BLVD., OKLA. CITY, OKLA. 73116 * LOCAL (405) 843-4847 * OUT OF STATE (800) 654-3219

DEWEY Certificate of Authorization No. 1293 LS

County, Oklahoma

300' FNL - 620' FEL Section 23 Township 19N Range 18W I.M.



ELEVATION:

1891' Gr. at Stake

Operator: TAPSTONE ENERGY

Lease Name: SINCLAIR 14/11-19-18

Well No.: 1H

Topography & Vegetation Loc. fell in terraced pasture, ±265' SW of NW-SE powerline and ±307' NE NW-SE pipeline

Good Drill Site? Yes Reference Stakes or Alternate Location Stakes Set None

Best Accessibility to Location From East off county road

Distance & Direction From the junction of St. Hwy. 51/US Hwy. 60 and US Hwy. 183 in Selling, OK,

go West ±7 miles on St. Hwy. 51/US Hwy. 60, then South ±2 miles to the NE Cor. of Sec. 23-T19N-R18W.

DATUM: NAD-27

LAT: 36°06'52.9"N

LONG: 99°04'53.2"W

LAT: 36.114697287°N

LONG: 99.081438667°W

STATE PLANE

COORDINATES: (US Feet)

ZONE: OK NORTH

X: 1680578

Y: 407538

This information was gathered with a GPS receiver with ±1 foot Horiz./Vert. accuracy.

Invoice # 278937 Date of Drawing: July 13, 2017

269423 Date Staked: Jan. 19, 2017 JP

FINAL AS-DRILLED PLAT

AS-DRILLED INFORMATION
FURNISHED BY TAPSTONE ENERGY