

Oklahoma Corporation Commission
Oil & Gas Conservation Division
Post Office Box 52000
Oklahoma City, Oklahoma 73152-2000
Rule 165: 10-3-25

Form 1002A

API No.: 35011238140000

Completion Report

Spud Date: June 24, 2017

OTC Prod. Unit No.: 093-219205

Drilling Finished Date: July 19, 2017

1st Prod Date: August 23, 2017

Completion Date: August 20, 2017

Drill Type: HORIZONTAL HOLE

Min Gas Allowable: Yes

Well Name: NUGGET 34-20-12 1HC

Purchaser/Measurer: CHESAPEAKE OPERATING LLC

Location: BLAINE 34 20N 12W
SE SW SW SW
195 FSL 595 FWL of 1/4 SEC
Derrick Elevation: 1413 Ground Elevation: 1388

First Sales Date: 08/23/2017

Operator: CHESAPEAKE OPERATING LLC 17441
PO BOX 18496
6100 N WESTERN AVE
OKLAHOMA CITY, OK 73154-0496

Completion Type		Location Exception		Increased Density	
X	Single Zone	Order No		Order No	
	Multiple Zone	668592		664996	
	Commingled	668593			

Casing and Cement							
Type	Size	Weight	Grade	Feet	PSI	SAX	Top of CMT
SURFACE	13 3/8	48	J-55	337		516	SURFACE
INTERMEDIATE	9 5/8	36	J-55	1534		637	SURFACE
PRODUCTION	5 1/2	20	P-110HC	18494		2959	1512

Liner								
Type	Size	Weight	Grade	Length	PSI	SAX	Top Depth	Bottom Depth
There are no Liner records to display.								

Total Depth: 18528

Packer		Plug	
Depth	Brand & Type	Depth	Plug Type
8371	AS-1X	18388	CIBP

Initial Test Data

Test Date	Formation	Oil BBL/Day	Oil-Gravity (API)	Gas MCF/Day	Gas-Oil Ratio Cu FT/BBL	Water BBL/Day	Pumpin or Flowing	Initial Shut-In Pressure	Choke Size	Flow Tubing Pressure
Sep 12, 2017	MISSISSIPPI SOLID	489	41	1823	3728	1105	FLOWING	800	40/64	759

Completion and Test Data by Producing Formation

Formation Name: MISSISSIPPI SOLID

Code: 351MSSSD

Class: OIL

Spacing Orders

Order No	Unit Size
228797	640
668591	MULTIUNIT

Perforated Intervals

From	To
8502	18379

Acid Volumes

1,000 GALLONS ACID

Fracture Treatments

174,405 BARRELS FLUIDS, 15,032,035 POUNDS PROPPANT
--

Formation	Top
MISSISSIPPI SOLID	8487

Were open hole logs run? No

Date last log run:

Were unusual drilling circumstances encountered? No

Explanation:

Other Remarks

PRODUCTION UNIT NUMBER 011-219205 FOR BLAINE COUNTY. OCC - RESTORING 1002A AFTER NETWORK GOING DOWN NO CHANGE FROM ORIGINAL APPROVAL 10/18/2017.

Lateral Holes

Sec: 27 TWP: 20N RGE: 12W County: MAJOR

NE NW NW NW

56 FNL 465 FWL of 1/4 SEC

Depth of Deviation: 7950 Radius of Turn: 273 Direction: 2 Total Length: 10041

Measured Total Depth: 18528 True Vertical Depth: 8223 End Pt. Location From Release, Unit or Property Line: 56

FOR COMMISSION USE ONLY

1137731

Status: Accepted

API NO. 011-23814
OTC PROD. UNIT NO. 093-219205

PLEASE TYPE OR USE BLACK INK ONLY
NOTE: Attach copy of original 1002A if recompletion or reentry.

OKLAHOMA CORPORATION COMMISSION
Oil & Gas Conservation Division
Post Office Box 52000
Oklahoma City, Oklahoma 73152-2000
Rule 165:10-3-25

RECEIVED Form 1002A Rev. 2009

SEP 22 2017

☒ ORIGINAL
☐ AMENDED
Reason Amended

COMPLETION REPORT

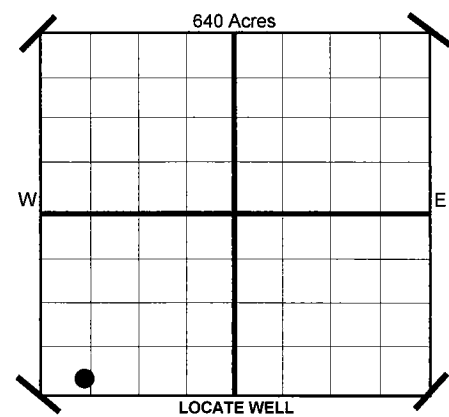
TYPE OF DRILLING OPERATION
☐ STRAIGHT HOLE ☐ DIRECTIONAL HOLE ☒ HORIZONTAL HOLE

If directional or horizontal, see reverse for bottom hole location.

COUNTY Blaine SEC 34 TWP 20N RGE 12W
LEASE NAME Nugget 34-20-12 WELL NO 1HC
SHL SE 1/4 SW 1/4 SW 1/4 SW 1/4 195 1/4 SEC 595
ELEVATION 1,413 Ground 1,388
Derrick Fl
OPERATOR NAME CHESAPEAKE OPERATING, L.L.C. OTC/OCC OPERATOR NO. 17441
ADDRESS P.O. BOX 18496
CITY OKLAHOMA CITY STATE OK ZIP 73154

SPUD DATE 6/24/2017
DRLG FINISHED DATE 7/19/2017
DATE OF WELL COMPLETION 8/20/2017
1ST PROD DATE 8/23/2017
RECOMP DATE
Longitude (if Known)

OKLAHOMA CORPORATION COMMISSION



COMPLETION TYPE

☒ SINGLE ZONE
☐ MULTIPLE ZONE
Application Date
COMINGLED
Application Date
LOCATION EXCEPTION ORDER NO. 664995 / 665170 (10)
INCREASED DENSITY
ORDER NO. 664996

CASING & CEMENT (Form 1002C must be attached)

TYPE	SIZE	WEIGHT	GRADE	FEET	PSI	SAX	TOP
CONDUCTOR							
SURFACE	13-3/8"	48#	J-55	337		516	Surface
INTERMEDIATE	9-5/8"	36#	J-55	1,534		637	Surface
PRODUCTION	5-1/2"	20#	P-110HC	18,494		2,959	1,512
LINER							

PACKER @ 8,371 BRAND & TYPE AS-1X PLUG @ TYPE PLUG @ 18,388 TYPE CIBP TOTAL DEPTH 18,528
PACKER @ BRAND & TYPE PLUG @ TYPE PLUG @ TYPE

COMPLETION & TEST DATA BY PRODUCING FORMATION

FORMATION	Mississippi Solid	Multiunit							
SPACING & SPACING ORDER NUMBER	640 228797								
CLASS: Oil, Gas, Dry, Inj. Disp, Comm Disp, Svc	Oil								
PERFORATED INTERVALS	8,502 - 18,379								
ACID/VOLUME	1,000 gals acid 174,405 bbls fluids 15,032.035# proppant								
FRACTURE TREATMENT (Fluids/Prop Amounts)									

Minimum Gas Allowable (165:10-17-7) Gas Purchaser/Measurer Chesapeake Operating, L.L.C.
☒ OR 1st Sales Date 8/23/2017
Oil Allowable (165:10-13-3)

INITIAL TEST DATA

INITIAL TEST DATE	9/12/2017								
OIL-BBL/DAY	489								
OIL-GRAVITY (API)	40.58 41								
GAS-MCF/DAY	1,823								
GAS-OIL RATIO CU FT/BBL	3,728								
WATER-BBL/DAY	1,105								
PUMPING OR FLOWING	Flowing								
INITIAL SHUT-IN PRESSURE	800								
CHOKE SIZE	40/64								
FLOW TUBING PRESSURE	759								

AS SUBMITTED

A record of the formations drilled through, and pertinent remarks are presented on the reverse. I declare that I have knowledge of the contents of this report and am authorized by my organization to make this report, which was prepared by me or under my supervision and direction, with the data and facts stated herein to be true, correct, and complete to the best of my knowledge and belief.

Juanita Cooper JUANITA COOPER - SR. REGULATORY ANALYST 9/21/2017 405-848-8000
SIGNATURE NAME (PRINT OR TYPE) DATE PHONE NUMBER
P.O. BOX 18496 OKLAHOMA CITY OK 73154 juanita.cooper@chk.com
ADDRESS CITY STATE ZIP EMAIL ADDRESS

Give formation names and tops, if available, or descriptions and thickness of formations drilled through. Show intervals cored or drillstem tested.

WELL NO. 1HC

NAMES OF FORMATIONS	TOP
Mississippi Solid	8,487

FOR COMMISSION USE ONLY	
ITD on file	<input type="checkbox"/> YES <input type="checkbox"/> NO
APPROVED	DISAPPROVED
<div>2) Reject Codes</div> <div> <div></div> <div></div> <div></div> <div></div> <div></div> </div>	

Were open hole logs run?	<u> </u> yes <u>X</u> no
Date Last log was run	N/A
Was CO ₂ encountered?	<u> </u> yes <u>X</u> no at what depths?
Was H ₂ S encountered?	<u> </u> yes <u>X</u> no at what depths?
Were unusual drilling circumstances encountered?	<u> </u> yes <u>X</u> no
If yes, briefly explain.	

Other remarks:

PUN 011-219205 for Blaine County

640 Acres

If more than three drainholes are proposed, attach a separate sheet indicating the necessary information.

Direction must be stated in degrees azimuth.
Please note, the horizontal drainhole and its end
point must be located within the boundaries of the
lease or spacing unit.

Directional surveys are required for all drainholes and directional wells.

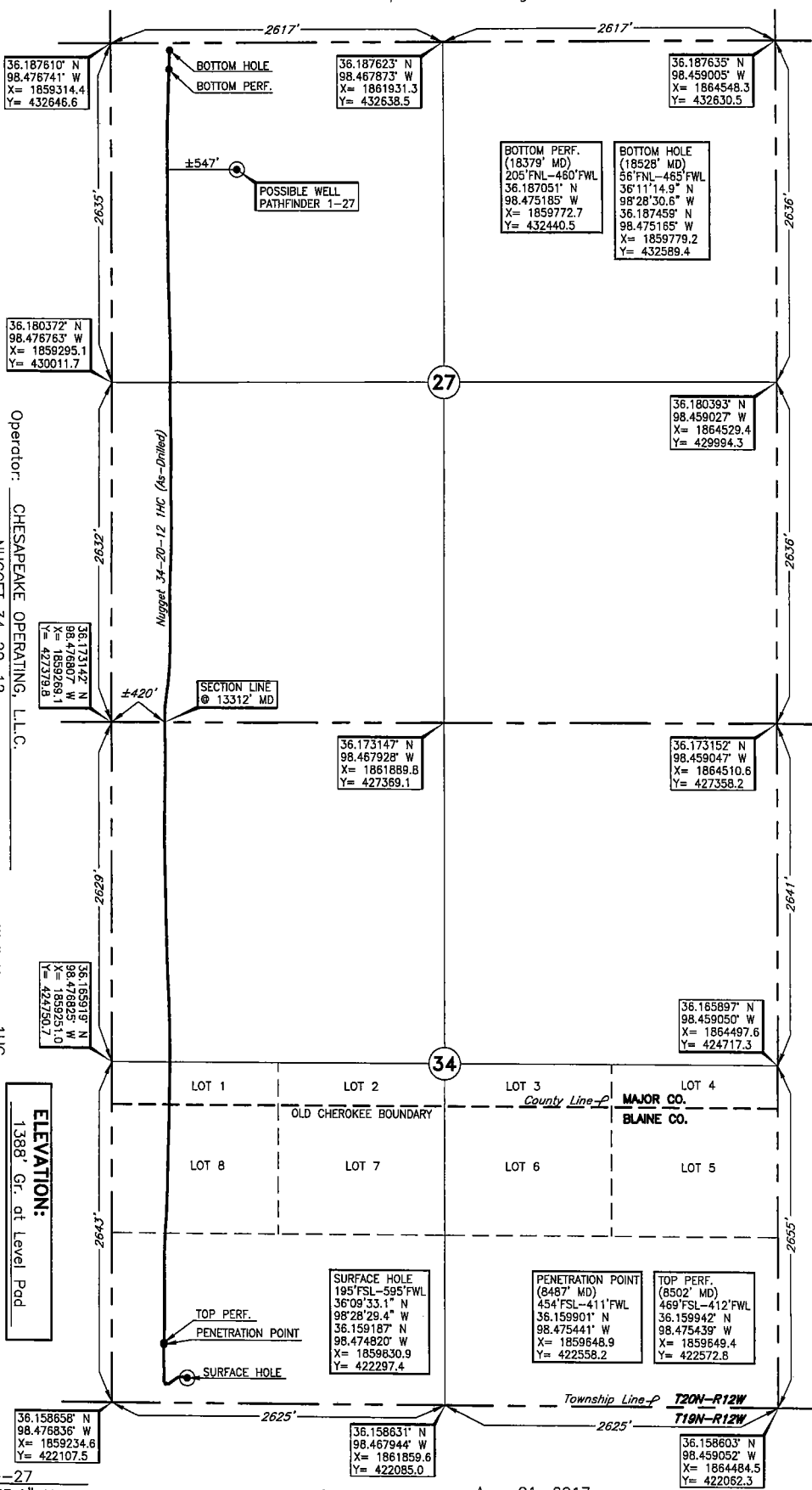
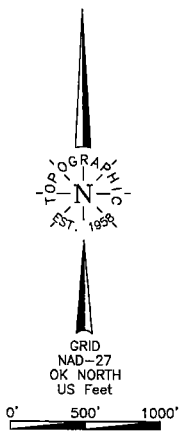
SEC	TWP	RGE	COUNTY
Spot Location			
1/4	1/4	1/4	1/4
Measured Total Depth		True Vertical Depth	Feet From 1/4 Sec Lines
			FSL
			FWL
BHL From Lease, Unit, or Property Line:			

LATERAL #1										
SEC	27	TWP	20N	RGE	12W	COUNTY	Major			
Spot Location						Feet From 1/4 Sec Lines	FNL	56	FWL	465
NE 1/4		NW 1/4		NW 1/4		NW 1/4				
Depth of Deviation		7,950		Radius of Turn		273		Direction	2	
Measured Total Depth		18.528		True Vertical Depth		8.223		BHL From Lease, Unit, or Property Line:		
								56		

SEC	TWP	RGE	COUNTY			
Spot Location				Feet From 1/4 Sec Lines	FSL	FWL
1/4	1/4	1/4	1/4			
Depth of Deviation		Radius of Turn	Direction	Total Length		
Measured Total Depth		True Vertical Depth	BHL From Lease, Unit, or Property Line:			

SEC	TWP	RGE	COUNTY			
Spot Location				Feet From 1/4 Sec Lines	FSL	FWL
1/4	1/4	1/4	1/4			
Depth of Deviation		Radius of Turn	Direction	Total Length		
Measured Total Depth		True Vertical Depth	BHL From Lease, Unit, or Property Line:			

BLAINE/MAJOR County, Oklahoma
195° FSL-595° FWL Section 34 Township 20N Range 12W I.M.



Operator: CHESAPEAKE OPERATING, L.L.C.
Lease Name: NUGGET 34-20-12
Topography & Vegetation: Loc. fell on level pod, ±250' West of bottom of drainage ditch, ±217' SE of fence, ±467' NE of water well
Good Drill Site? Yes
Reference Stakes or Alternate Location: Stakes Set None
Best Accessibility to Location: From West off St. Hwy. 51A.
Distance & Direction: From the junction of St. Hwy. 51 and St. Hwy. 51A, go ±7.0 miles North on St. Hwy. 51A to the SW Cor. of Sec. 34-20N-12W.

ELEVATION:
1388' Gr. at Level Pod

DATUM: NAD-27
LAT: 36°09'33.1" N
LONG: 98°28'29.4" W
LAT: 36°15'18.7" N
LONG: 98°47'48.2" W
STATE PLANE
COORDINATES: (US Feet)
ZONE: OK NORTH
X: 1859830.9
Y: 422297.4

280161 Date of Drawing: Aug. 21, 2017
Invoice # 269691 Date Staked: Feb. 23, 2017 JP

FINAL AS-DRILLED PLAT

AS-DRILLED INFORMATION
FURNISHED BY CHESAPEAKE OPERATING, L.L.C.