

Oklahoma Corporation Commission
Oil & Gas Conservation Division
Post Office Box 52000
Oklahoma City, Oklahoma 73152-2000
Rule 165: 10-3-25

Form 1002A

API No.: 35129240850000

Completion Report

Spud Date: November 28, 2016

OTC Prod. Unit No.:

Drilling Finished Date: December 29, 2017

1st Prod Date: July 26, 2017

Completion Date: March 08, 2017

Drill Type: HORIZONTAL HOLE

Min Gas Allowable: Yes

Well Name: SMITH 30-16-21 1-HA

Purchaser/Measurer: MARKWEST

Location: ROGER MILLS 24 16N 22W
NE SW SE SE
331 FSL 900 FEL of 1/4 SEC
Latitude: 35.841989335 Longitude: -99.48471482
Derrick Elevation: 2073 Ground Elevation: 2055

First Sales Date: 7/25/2017

Operator: FOURPOINT ENERGY LLC 23429

100 SAINT PAUL ST STE 400
DENVER, CO 80206-5140

Completion Type		Location Exception		Increased Density	
X	Single Zone	Order No		Order No	
	Multiple Zone	669405		There are no Increased Density records to display.	
	Commingled				

Casing and Cement							
Type	Size	Weight	Grade	Feet	PSI	SAX	Top of CMT
SURFACE	9-5/8	36	J-55	653	1730	430	SURFACE
INTERMEDIATE	7	26	P-110	8006	3950	480	2593
PRODUCTION	4 1/2	11.6	P-110	8896	12640	175	6396

Liner								
Type	Size	Weight	Grade	Length	PSI	SAX	Top Depth	Bottom Depth
LINER	4 1/2	11.6	P-110	5229	12640	345	8896	14125

Total Depth: 14125

Packer	
Depth	Brand & Type
8931	SCHLUMBERGER 5" X 7" PV3 LINER TOP PACKER

Plug	
Depth	Plug Type
There are no Plug records to display.	

Initial Test Data

Test Date	Formation	Oil BBL/Day	Oil-Gravity (API)	Gas MCF/Day	Gas-Oil Ratio Cu FT/BBL	Water BBL/Day	Pumpin or Flowing	Initial Shut-In Pressure	Choke Size	Flow Tubing Pressure
Aug 13, 2017	TONKAWA	360	41.5	315	875	608	PUMPING	210	64/64	105

Completion and Test Data by Producing Formation

Formation Name: TONKAWA

Code: 406TNKW

Class: OIL

Spacing Orders

Order No	Unit Size
657989	640

Perforated Intervals

From	To
9320	13832

Acid Volumes

32000 GAL FE 15% HCL

Fracture Treatments

5,122,330 PREMIUM WHITE 40/70 MESH SAND, 125,957 BBLS WATER

Formation	Top
TONKAWA	8411

Were open hole logs run? No

Date last log run:

Were unusual drilling circumstances encountered? No

Explanation:

Other Remarks

PRODUCTION STRING IS A TIE BACK STRING. SCHLUMBERGER 5" X 7" PV3 LINER TOP PACKER AT 8931' MD

Lateral Holes

Sec: 30 TWP: 16N RGE: 21W County: ROGER MILLS

SW SW SE SW

61 FSL 721 FWL of 1/4 SEC

Depth of Deviation: 8250 Radius of Turn: 315 Direction: 181 Total Length: 5380

Measured Total Depth: 14125 True Vertical Depth: 8565 End Pt. Location From Release, Unit or Property Line: 61

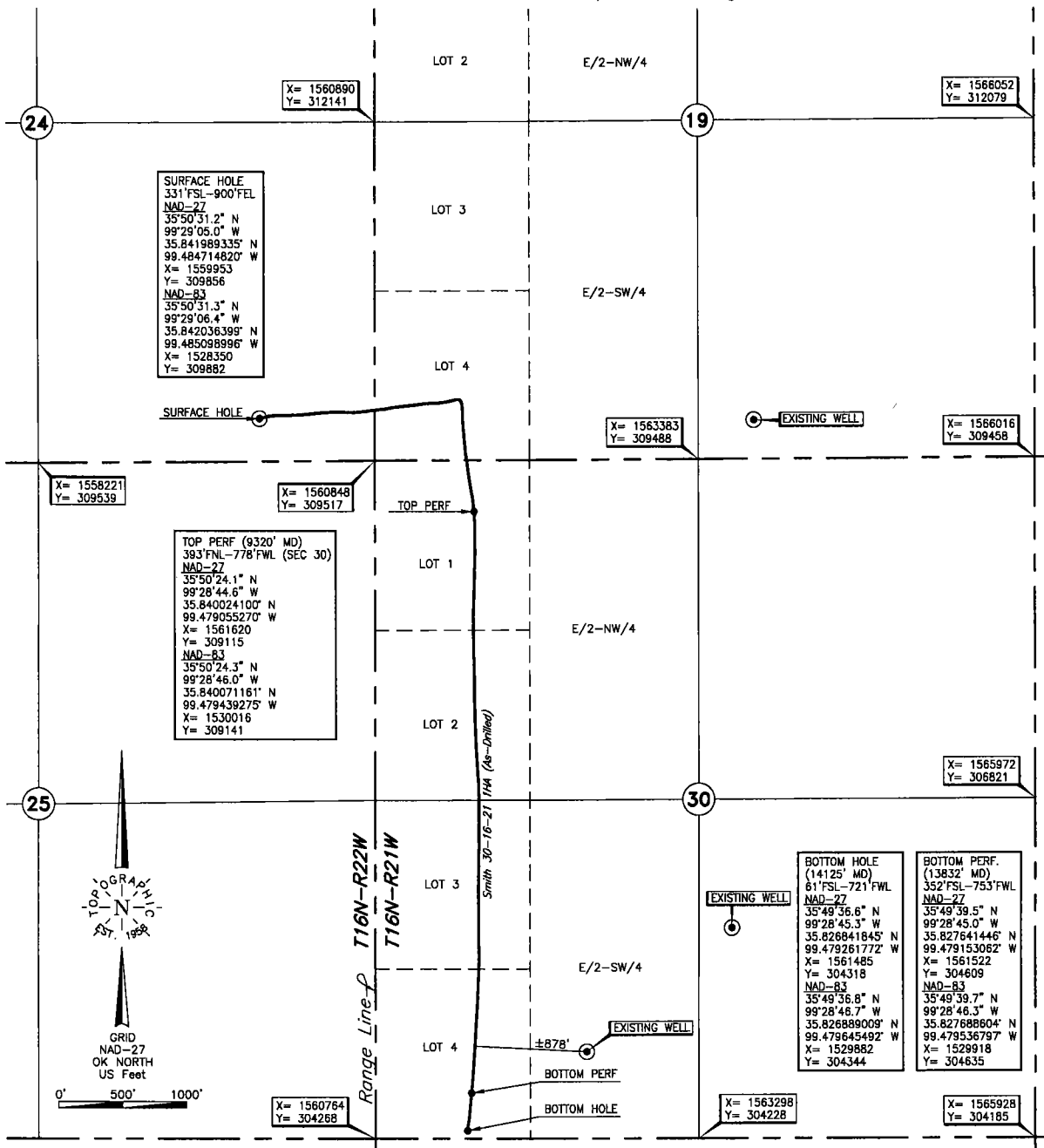
FOR COMMISSION USE ONLY

1137708

Status: Accepted

ROGER MILLS

331'FSL-900'FEL Section 24 Township 16N Range 22W I.M. County, Oklahoma



Operator: FOURPOINT ENERGY, LLC.

Lease Name: SMITH 30-16-21

Well No.: 1HA

ELEVATION:

2055' Gr. at Level Pad

Topography & Vegetation Loc. fell on level pad, ±15' South of existing Well

Good Drill Site? YES

Reference Stakes or Alternate Location
Stakes Set None

Best Accessibility to Location From South off St. Hwy. 47

Distance & Direction

from Hwy Jct or Town From the junction of county line and St. Hwy. 47 E-W go West ±6.0 miles on

St. Hwy. 47 to the SE Cor. of Sec. 24-T16N-R22W.

DATUM: NAD-27
LAT: 35°50'31.2" N
LONG: 99°29'05.0" W
LAT: 35.841989335" N
LONG: 99.484714820" W
STATE PLANE
COORDINATES: (US Feet)
ZONE: OK NORTH
X: 1559953
Y: 309856

280094 Date of Drawing: Aug. 17, 2017
Invoice # 264163 Date Staked: Aug. 18, 2016 JP

FINAL AS-DRILLED PLAT

AS-DRILLED INFORMATION
FURNISHED BY FOURPOINT ENERGY, LLC.