

Oklahoma Corporation Commission
Oil & Gas Conservation Division
Post Office Box 52000
Oklahoma City, Oklahoma 73152-2000
Rule 165: 10-3-25

Form 1002A

API No.: 35043235110000

Completion Report

Spud Date: May 01, 2017

OTC Prod. Unit No.: 043219003

Drilling Finished Date: June 04, 2017

1st Prod Date: July 14, 2017

Completion Date: July 12, 2017

Drill Type: HORIZONTAL HOLE

Min Gas Allowable: Yes

Well Name: JOHNSON 2-18-16 1H

Purchaser/Measurer: ENABLE

Location: DEWEY 35 19N 16W
SW SE SW SE
250 FSL 1730 FEL of 1/4 SEC
Latitude: 36.0727911 Longitude: -98.87289681
Derrick Elevation: 1902 Ground Elevation: 1877

First Sales Date: 07/14/2017

Operator: TAPSTONE ENERGY LLC 23467

100 E MAIN ST
OKLAHOMA CITY, OK 73104-2509

Completion Type		Location Exception		Increased Density	
X	Single Zone	Order No		Order No	
	Multiple Zone	650052		There are no Increased Density records to display.	
	Commingled				

Casing and Cement							
Type	Size	Weight	Grade	Feet	PSI	SAX	Top of CMT
SURFACE	13 3/8	54.5	J-55	1515	700	1181	SURFACE
INTERMEDIATE	9 5/8	40	P-110	10505	3000	1030	5870
PRODUCTION	5 1/2	20	P-110	16240	3000	1521	8150

Liner								
Type	Size	Weight	Grade	Length	PSI	SAX	Top Depth	Bottom Depth
There are no Liner records to display.								

Total Depth: 16240

Packer		Plug	
Depth	Brand & Type	Depth	Plug Type
11160	AS1-X	There are no Plug records to display.	

Initial Test Data

Test Date	Formation	Oil BBL/Day	Oil-Gravity (API)	Gas MCF/Day	Gas-Oil Ratio Cu FT/BBL	Water BBL/Day	Pumpin or Flowing	Initial Shut-In Pressure	Choke Size	Flow Tubing Pressure
Jul 26, 2017	MISSISSIPPIAN	246	45.8	2726	11081	1288	FLOWING		28/64	1550

Completion and Test Data by Producing Formation									
Formation Name: MISSISSIPPIAN				Code: 359MSSP			Class: OIL		
Spacing Orders				Perforated Intervals					
Order No		Unit Size		From			To		
647798		640		11360			16240		
Acid Volumes				Fracture Treatments					
31,720 GALLONS 15% HCL				195,059 BARRELS, 5,818,585 POUNDS PROPPANT					

Formation	Top
BASE HEEBNER	6318
TONKAWA	6811
COTTAGE GROVE	7313
HOGSHOOTER	7615
OSWEGO	8062
ATOKA	8659
MISSISSIPPIAN	9246

Were open hole logs run? No
Date last log run:

Were unusual drilling circumstances encountered? No
Explanation:

Other Remarks
OCC - THIS DOCUMENT IS ACCEPTED BASED ON THE DATA SUBMITTED THE FINAL LOCATION EXCEPTION HAS NOT BEEN ISSUED.

Lateral Holes
Sec: 2 TWP: 18N RGE: 16W County: DEWEY SW SE SW SE 167 FSL 1944 FEL of 1/4 SEC Depth of Deviation: 10627 Radius of Turn: 801 Direction: 179 Total Length: 4812 Measured Total Depth: 16240 True Vertical Depth: 11140 End Pt. Location From Release, Unit or Property Line: 167

FOR COMMISSION USE ONLY
<div>Status: Accepted</div> <div>1137872</div>

RECEIVED

OCT 12 2017

Form 1002A
Rev. 2009

API NO. 3504323511
OTC PROD. UNIT NO. 043219003

PLEASE TYPE OR USE BLACK INK ONLY

NOTE:

Attach copy of original 1002A if recompletion or reentry.

OKLAHOMA CORPORATION COMMISSION
Oil & Gas Conservation Division
Post Office Box 52000
Oklahoma City, Oklahoma 73152-2000
Rule 165:10-3-25

OKLAHOMA CORPORATION COMMISSION

☒ ORIGINAL
☐ AMENDED (Reason)

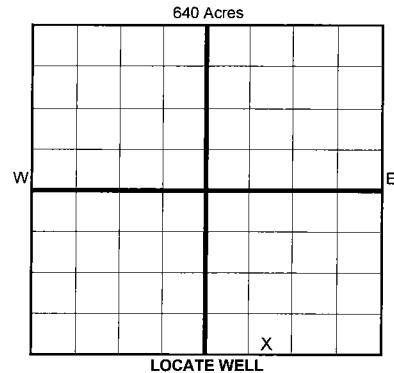
COMPLETION REPORT

TYPE OF DRILLING OPERATION

☐ STRAIGHT HOLE ☐ DIRECTIONAL HOLE ☒ HORIZONTAL HOLE
☐ SERVICE WELL

If directional or horizontal, see reverse for bottom hole location.

COUNTY	DEWEY	SEC	35	TWP	19N	RGE	16W	SPUD DATE	5/1/2017	
LEASE NAME	JOHNSON 2-18-16						WELL NO.	1H	DRLG FINISHED DATE	6/4/2017
SW 1/4 SE 1/4 SW 1/4 SE 1/4	FSL OF 1/4 SEC	250'	FEL OF 1/4 SEC	1730'	DATE OF WELL COMPLETION	7/12/2017				
ELEVATION N Derrick	1,902	Ground	1,877	Latitude (if known)	36.0727911	Longitude (if known)	-98.87289681			
OPERATOR NAME	Tapstone Energy, LLC						OTC/OCC OPERATOR NO.	23467		
ADDRESS	PO Box 1608									
CITY	Oklahoma City	STATE	OK	ZIP	73101-1608					



COMPLETION TYPE

<input checked="" type="checkbox"/> SINGLE ZONE	<input checked="" type="checkbox"/>
<input type="checkbox"/> MULTIPLE ZONE	
Application Date	
COMINGLED	
Application Date	
LOCATION	650052 - Interim
EXCEPTION ORDER	
INCREASED DENSITY ORDER NO.	

CASING & CEMENT (Form 1002C must be attached)

TYPE	SIZE	WEIGHT	GRADE	FEET	PSI	SAX	TOP OF CMT
CONDUCTOR							
SURFACE	13 3/8"	54.5	J-55	1,515'	700	1,181	SURFACE
INTERMEDIATE	9 5/8"	40	P-110	10,505'	3,000	1,030	5,870' EST
PRODUCTION	5 1/2"	20	P-110	16,240'	3,000	1,521	8,150' EST
LINER							
				TOTAL DEPTH	16,240'		

PACKER @ 11,160' BRAND & TYPE AS1-X PLUG @ TYPE PLUG @ TYPE
PACKER @ BRAND & TYPE PLUG @ TYPE PLUG @ TYPE

COMPLETION & TEST DATA BY PRODUCING FORMATION

FORMATION	MISSISSIPPIAN						
SPACING & SPACING ORDER NUMBER	640 ac. - 647798						
CLASS: Oil, Gas, Dry, Inj, Disp, Comm Disp, Svc	OIL						
PERFORATED INTERVALS	11,360' - 16,240'						
ACID/VOLUME	31,720 gal 15% HCL						
FRACTURE TREATMENT (Fluids/Prop Amounts)	195,059 bbls						
	5,818,585# PROP						

Reported to FractFocus

Min Gas Allowable (165:10-17-7)

Gas Purchaser/Measurer

ENABLE

☒

Oil Allowable (165:10-13-3)

First Sales Date

7/14/2017

INITIAL TEST DATA

INITIAL TEST DATE	7/26/2017						
OIL-BBL/DAY	246						
OIL-GRAVITY (API)	45.8						
GAS-MCF/DAY	2726						
GAS-OIL RATIO CU FT/BBL	11,081						
WATER-BBL/DAY	1288						
PUMPING OR FLOWING	FLOWING						
INITIAL SHUT-IN PRESSURE							
CHOKE SIZE	28/64"						
FLOW TUBING PRESSURE	1550						

AS SUBMITTED

A record of the formations drilled through, and pertinent remarks are presented on the reverse. I declare that I have knowledge of the contents of this report and am authorized by my organization to make this report, which was prepared by me or under my supervision and direction, with the data and facts stated herein to be true, correct, and complete to the best of my knowledge and belief.

SIGNATURE Bryan Rother NAME (PRINT OR TYPE) Bryan Rother DATE 6/11/17 PHONE NUMBER 405-702-1600
PO Box 1608 ADDRESS Oklahoma City OK 73101-1608 EMAIL ADDRESS brother@tapstoneenergy.com

Give formation names and tops, if available, or descriptions and thickness of formations drilled through. Show intervals cored or drillstem tested

WELL NO. 1H

FOR COMMISSION USE ONLY	
ITD on file <input type="checkbox"/> YES <input type="checkbox"/> NO	
APPROVED DISAPPROVED	2) Reject Codes

Date Last log was run

was CO₂ encountered? yes **X** no at what depths?

was H₂S encountered? yes **X** no at what depths?

Were unusual drilling circumstances encountered? _____ yes X no
If yes, briefly explain below

Other remarks:

640 Acres

If more than three drainholes are proposed, attach a separate sheet indicating the necessary information.

Direction must be stated in degrees azimuth.
Please note, the horizontal drainhole and its end point must be located within the boundaries of the lease or spacing unit.

Directional surveys are required for all drainholes and directional wells.

640 Acres

A blank 4x4 grid with a bold cross dividing it into four 2x2 quadrants.

BOTTOM HOLE LOCATION FOR DIRECTIONAL HOLE

SEC	TWP	RGE	COUNTY
Spot Location			
1/4	1/4	1/4	1/4
Measured Total Depth		True Vertical Depth	BHL From Lease, Unit, or Property Line:

BOTTOM HOLE LOCATION FOR HORIZONTAL HOLE: (LATERALS)

LATERAL #1

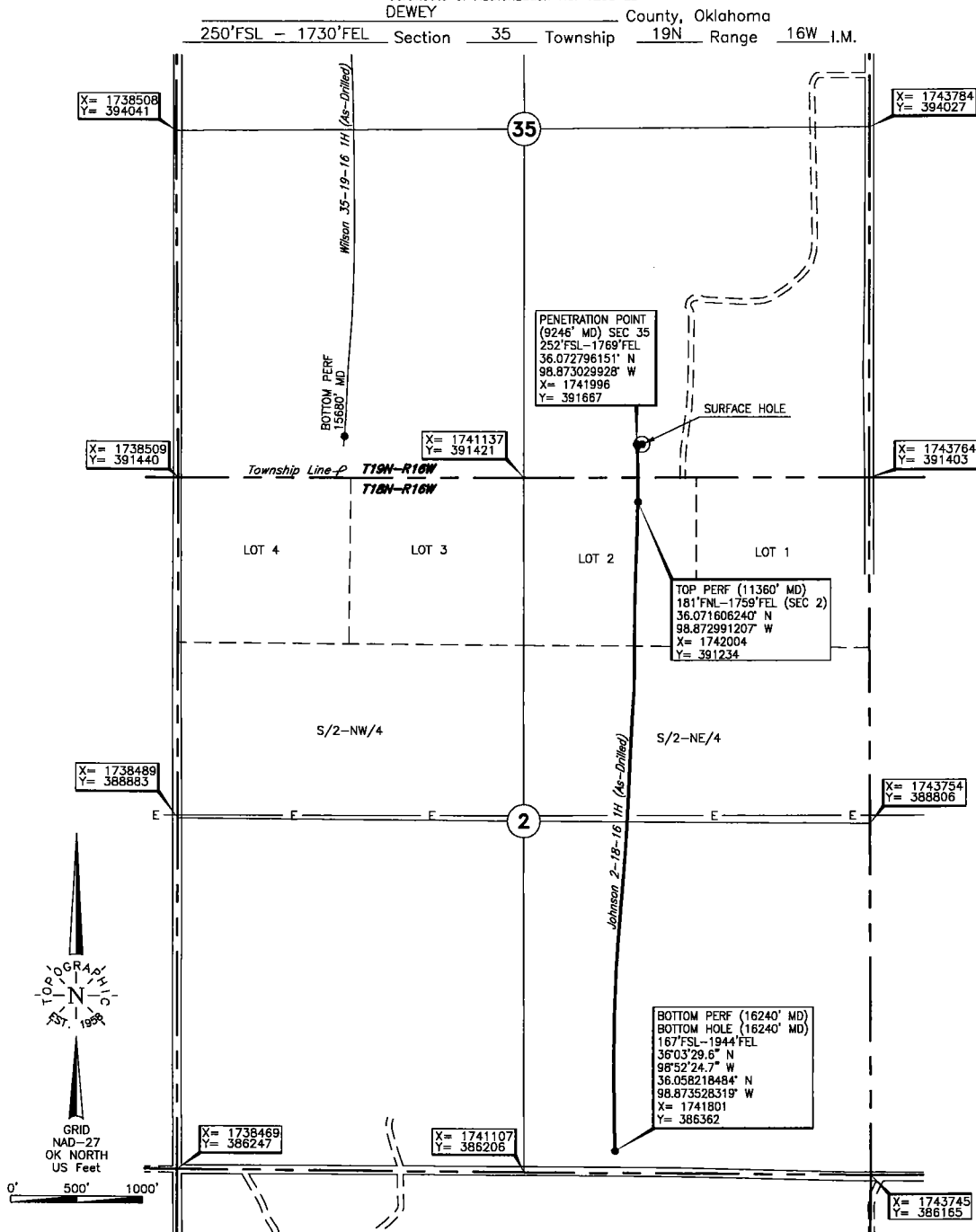
SEC 2	TWP 18N	RGE 16W	COUNTY DEWEY
Spot Location			
SW 1/4	SE 1/4	SW 1/4	SE 1/4
Feet From 1/4 Sec Lines		FSL 167'	FEL 1,944'
Depth of Deviation	10,627'	Radius of Turn	801'
Direction		179	Total Length
Measured Total Depth		4,812'	
16,240'		True Vertical Depth	BHL From Lease, Unit, or Property Line:
11,140'		167'	

LATERAL #2

SEC	TWP	RGE	COUNTY			
Spot Location				Feet From 1/4 Sec Lines	FSL	FWL
1/4	1/4	1/4	1/4			
Depth of Deviation		Radius of Turn		Direction	Total Length	
Measured Total Depth		True Vertical Depth		BHL From Lease, Unit, or Property Line:		

LATERAL #3

SEC	TWP	RGE	COUNTY			
Spot Location				Feet From 1/4 Sec Lines	FSL	FWL
1/4	1/4	1/4	1/4			
Depth of Deviation		Radius of Turn	Direction	Total Length		
Measured Total Depth		True Vertical Depth	BHL From Lease, Unit, or Property Line:			



Operator: TAPSTONE ENERGY

Lease Name: JOHNSON 2-18-16 Well No.: 1H **ELEVATION:** 1877' Gr. at Stake

Topography & Vegetation Loc. fell in rolling grass pasture ±252' NE of NW-SE pipeline.

Good Drill Site? Yes Reference Stakes or Alternate Location Stakes Set None

Best Accessibility to Location From East off county road

Distance & Direction From Jct. US Hwy. 281 NW-SE and St. Hwy. 51 E, go ±2.5 mi. NW
on US Hwy. 281, then ±0.8 mi. West, then ±1.0 mi. South to the SE Cor. of Sec. 35-T19N-R1W.

DATUM: NAD-27
 LAT: 36°04'22.0" N
 LONG: 98°52'22.4" W
 LAT: 36.072791084° N
 LONG: 98.872896809° W
 STATE PLANE
 COORDINATES: (US Feet)
 ZONE: OK NORTH
 X: 1742036
 Y: 391665

279022 Date of Drawing: July 19, 2017
 Invoice # 269962 Date Staked: Apr. 04, 2017 JP

FINAL AS-DRILLED PLAT

AS-DRILLED INFORMATION
FURNISHED BY TAPSTONE ENERGY