

Oklahoma Corporation Commission
Oil & Gas Conservation Division
Post Office Box 52000
Oklahoma City, Oklahoma 73152-2000
Rule 165: 10-3-25

Form 1002A

API No.: 35045236430000

Completion Report

Spud Date: April 02, 2017

OTC Prod. Unit No.: 04522224200000

Drilling Finished Date: April 13, 2017

1st Prod Date: September 15, 2017

Completion Date: September 15, 2017

Drill Type: HORIZONTAL HOLE

Min Gas Allowable: Yes

Well Name: YOUNG 27 2H

Purchaser/Measurer: ETC FILED SERVICES

Location: ELLIS 27 20N 25W
S2 SE SE SE
250 FSL 330 FEL of 1/4 SEC
Latitude: 36.1734306 Longitude: -99.8468056
Derrick Elevation: 2510 Ground Elevation: 2529

First Sales Date: 09-15-2017

Operator: JONES ENERGY LLC 21043

807 LAS CIMAS PKWY STE 350
AUSTIN, TX 78746-6193

Completion Type		Location Exception		Increased Density	
X	Single Zone	Order No		Order No	
	Multiple Zone	664840		663548	
	Commingled				

Casing and Cement							
Type	Size	Weight	Grade	Feet	PSI	SAX	Top of CMT
SURFACE	9.625	36	J55	880		515	SURFACE
PRODUCTION	7	26	P110	8782		395	6224

Liner								
Type	Size	Weight	Grade	Length	PSI	SAX	Top Depth	Bottom Depth
LINER	4.5	13.5	P110	4432	0	0	8583	13015

Total Depth: 13029

Packer	
Depth	Brand & Type
There are no Packer records to display.	

Plug	
Depth	Plug Type
There are no Plug records to display.	

Initial Test Data

Test Date	Formation	Oil BBL/Day	Oil-Gravity (API)	Gas MCF/Day	Gas-Oil Ratio Cu FT/BBL	Water BBL/Day	Pumpin or Flowing	Initial Shut-In Pressure	Choke Size	Flow Tubing Pressure
Sep 28, 2017	CLEVELAND	126	47	202	2570	418	GAS LIFT	1790	64/64	1010

Completion and Test Data by Producing Formation

Formation Name: CLEVELAND		Code: 405CLVD		Class: OIL	
Spacing Orders		Perforated Intervals			
Order No	Unit Size	From	To		
65115	640	There are no Perf. Intervals records to display.			
Acid Volumes		Fracture Treatments			
NONE		65677 BBLS FLUID & 2407920 LBS PROPPANT			

Formation	Top
CLEVELAND	8668

Were open hole logs run? No

Date last log run:

Were unusual drilling circumstances encountered? No

Explanation:

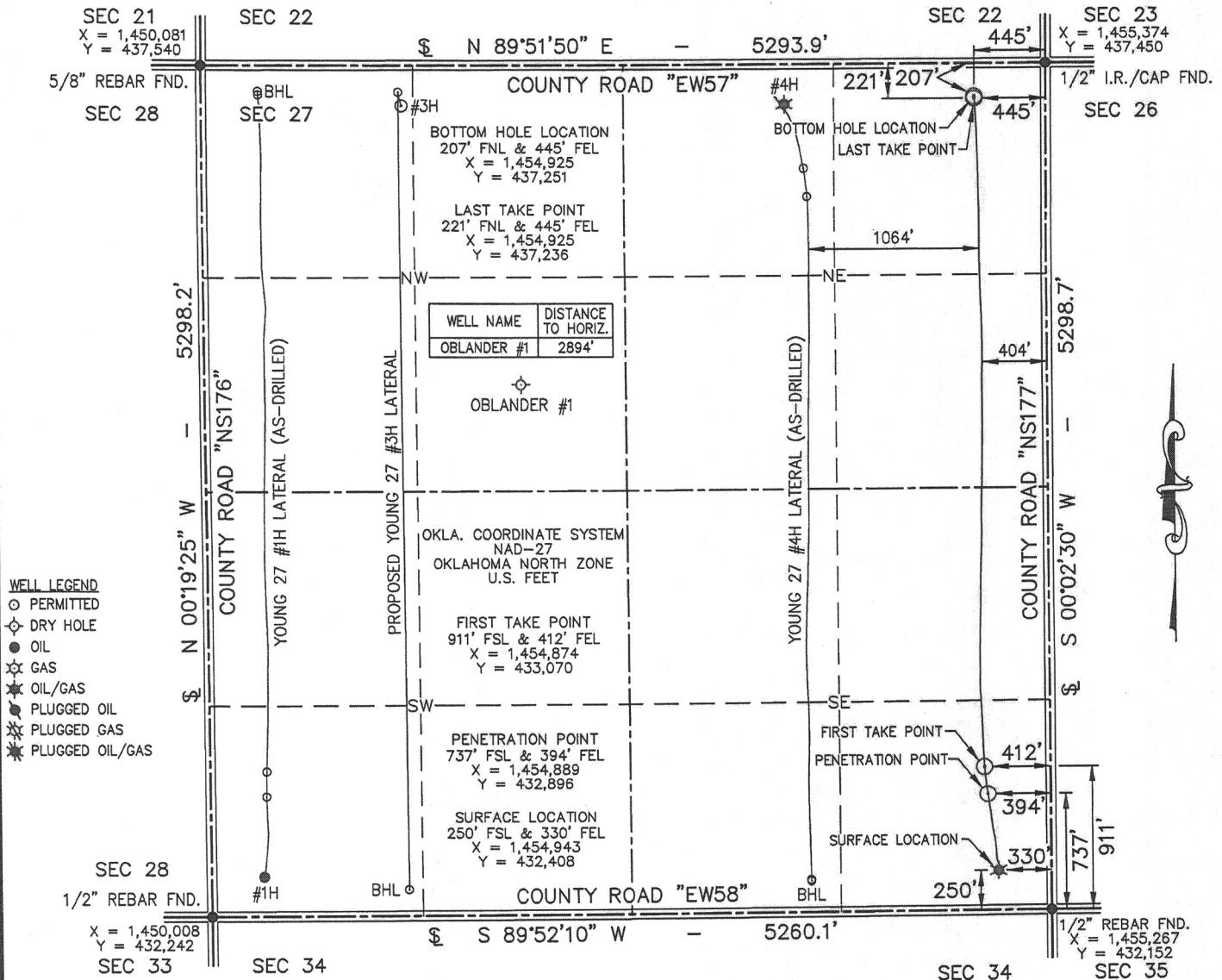
Other Remarks
OCC - THIS WELL IS AN OPEN HOLE COMPLETION FROM BOTTOM OF THE 7" CASING AT 8782' TO TERMINUS AT 13029'. THE 4 1/2" LINER IS NOT CEMENTED. THIS DOCUMENT IS ACCEPTED BASED ON THE DATA SUBMITTED THE FINAL LOCATION EXCEPTION HAS NOT BEEN SUBMITTED. OCC - RESTORING 1002A AFTER NETWORK GOING DOWN NO CHANGE FROM THE ORIGINAL APPROVAL 10/18/2017.

Lateral Holes
Sec: 27 TWP: 20N RGE: 25W County: ELLIS
NW NE NE NE
207 FNL 445 FEL of 1/4 SEC
Depth of Deviation: 7769 Radius of Turn: 648 Direction: 360 Total Length: 4244
Measured Total Depth: 13029 True Vertical Depth: 8439 End Pt. Location From Release, Unit or Property Line: 207

FOR COMMISSION USE ONLY
<div>Status: Accepted</div> <div>1137706</div>

"AS-DRILLED" WELL LOCATION PLAT

COMPANY JONES ENERGY, LLC LEASE YOUNG 27 WELL NO. 2H
 SECTION 27 TOWNSHIP 20-N RANGE 25-WIM LOCATION 250' FSL 330' FEL
 COUNTY ELLIS STATE OKLAHOMA TOPOGRAPHY AND VEGETATION EXISTING PAD
 LATITUDE 36°10'25.19" LONGITUDE -99°50'48.50" NAD27 ELEVATION 2510' NGVD29 DATE STAKED 1/30/17
 DIRECTION FROM NEAREST TOWN APPROXIMATELY 5.0 MILES NORTHWEST OF ARNETT, OKLAHOMA



NOTE:

- This plat is intended for Oklahoma Corporation Commission Permit purposes only and is NOT to be relied upon as a boundary survey and is NOT to be used to convey or establish real property interests.
- Bearings and dimensions shown are based on Geodetic Azimuth and Ground distance. All X,Y coordinates are based on NAD27, Oklahoma North Zone, U.S. Feet.
- X,Y Coordinates were derived from GPS RTK methods and are only accurate within +/- 10 feet.
- As-drilled data shown on this plat was provided by client and /or third party. Information was not nor has not been field verified by Surveyor.

THIS IS TO CERTIFY THAT THE ABOVE PLAT WAS PREPARED FROM FIELD NOTES OF ACTUAL SURVEYS MADE BY MYSELF OR OTHERS UNDER MY SUPERVISION AND THAT THE SAME ARE TRUE AND CORRECT TO THE BEST OF MY KNOWLEDGE AND BELIEF.

SIGNED: _____

DATED: 9/29/17



105 HACKBERRY TRAIL • CANADIAN, TX 79014 • (806) 323-6773 • TEXAS FIRM NO. 10010100
 CERTIFICATE OF AUTHORIZATION NO. 7798, EXP. JUNE 30, 2018



807 LAS CIMAS PARKWAY • SUITE 350 • AUSTIN, TEXAS 78746

FIELD:	N/A
DRAWN:	CM
DATE:	9/29/17
CHECKED:	MLS
REVISION:	
SHEET:	1 OF 1



JOB NO. C217-022-5