

Oklahoma Corporation Commission
Oil & Gas Conservation Division
Post Office Box 52000
Oklahoma City, Oklahoma 73152-2000
Rule 165: 10-3-25

Form 1002A

API No.: 35027353410002

Completion Report

Spud Date: October 30, 1952

OTC Prod. Unit No.: 027-07553

Drilling Finished Date: January 02, 1953

1st Prod Date: January 19, 1953

Amended

Completion Date: January 19, 1953

Amend Reason: TEMPORARILY ABANDONED - OIL WELL

Recomplete Date: August 16, 2017

Drill Type: STRAIGHT HOLE

Well Name: SEITER 3

Purchaser/Measurer:

Location: CLEVELAND 29 10N 2W
W2 W2 NE SW
1980 FSL 1485 FWL of 1/4 SEC
Derrick Elevation: 1184 Ground Elevation: 1173

First Sales Date:

Operator: GRAND RESOURCES INC 8702

2448 E 81ST ST STE 4040
TULSA, OK 74137-4246

Completion Type	
X	Single Zone
	Multiple Zone
	Commingled

Location Exception	
Order No	
There are no Location Exception records to display.	

Increased Density	
Order No	
There are no Increased Density records to display.	

Casing and Cement							
Type	Size	Weight	Grade	Feet	PSI	SAX	Top of CMT
SURFACE	9 5/8	32.3		836		400	SURFACE
PRODUCTION	5 1/2	15.5		6100		300	SURFACE

Liner								
Type	Size	Weight	Grade	Length	PSI	SAX	Top Depth	Bottom Depth
There are no Liner records to display.								

Total Depth: 7640

Packer	
Depth	Brand & Type
There are no Packer records to display.	

Plug	
Depth	Plug Type
There are no Plug records to display.	

Initial Test Data										
Test Date	Formation	Oil BBL/Day	Oil-Gravity (API)	Gas MCF/Day	Gas-Oil Ratio Cu FT/BBL	Water BBL/Day	Pumpin or Flowing	Initial Shut-In Pressure	Choke Size	Flow Tubing Pressure
There are no Initial Data records to display.										

Completion and Test Data by Producing Formation			
Formation Name: SIMPSON DOLOMITE		Code: 202SMPSD	Class: TA
Spacing Orders		Perforated Intervals	
Order No	Unit Size	From	To
There are no Spacing Order records to display.		7206	7226
Acid Volumes		Fracture Treatments	
There are no Acid Volume records to display.		There are no Fracture Treatments records to display.	

Formation	Top
SIMPSON-DOLOMITE	7206
TULIP CREEK	7637

Were open hole logs run? No
Date last log run:

Were unusual drilling circumstances encountered? No
Explanation:

Other Remarks
There are no Other Remarks.

FOR COMMISSION USE ONLY	
Status: Accepted	1137822

RECEIVED

SEP 29 2017

Form 1002A
Rev. 2009

API NO. 35-027-35341
OTC PROD UNIT NO. 35-027-07553

PLEASE TYPE OR USE BLACK INK ONLY
NOTE:

Attach copy of original 1002A
if recompletion or reentry.

OKLAHOMA CORPORATION COMMISSION
Oil & Gas Conservation Division
Post Office Box 52000
Oklahoma City, Oklahoma 73152-2000
Rule 165:10-3-25

OKLAHOMA CORPORATION
COMMISSION

☐ ORIGINAL
☒ AMENDED (Reason)

TA - oil well

COMPLETION REPORT

TYPE OF DRILLING OPERATION

☒ STRAIGHT HOLE ☐ DIRECTIONAL HOLE ☐ HORIZONTAL HOLE
☐ SERVICE WELL

If directional or horizontal, see reverse for bottom hole location.

COUNTY Cleveland SEC 29 TWP 10N RGE 02W

LEASE NAME Seiter WELL NO. 3

NE 1/4 SW 1/4 FSL OF 1/4 SEC 1980 FWL OF 1/4 SEC 1485

ELEVATION 1184' Ground 1173' Latitude (if known)

OPERATOR NAME Grand Resources, Inc. OTC/OCC OPERATOR NO. 8702

ADDRESS 2448 East 81st Street, Suite 4040

CITY Tulsa STATE OK ZIP 74137

SPUD DATE 10/30/1952

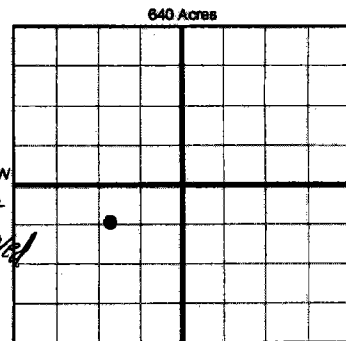
DRLG FINISHED DATE 01/02/1953

DATE OF WELL COMPLETION 01/19/1953

1st PROD DATE 01/19/1953

RECOMP DATE 8-16-17

Longitude (if known)



COMPLETION TYPE

☒ SINGLE ZONE
☐ MULTIPLE ZONE
Application Date
☐ COMMINGLED
Application Date
LOCATION
EXCEPTION ORDER
INCREASED DENSITY
ORDER NO.

CASING & CEMENT (Form 1002C must be attached)

TYPE	SIZE	WEIGHT	GRADE	FEET	PSI	SAX	TOP OF CMT
CONDUCTOR							
SURFACE	9 5/8	32.3		836.01		400	Surface
INTERMEDIATE	5 1/2	17		1,519		300	Surface
PRODUCTION	5 1/2	15.5		6100.28		300 for both	Surface
LINER						5 1/2	
						TOTAL DEPTH	7,640

PACKER @ BRAND & TYPE PLUG @ TYPE PLUG @ TYPE
PACKER @ BRAND & TYPE PLUG @ TYPE PLUG @ TYPE

COMPLETION & TEST DATA BY PRODUCING FORMATION

FORMATION	Simpson-Dolomite						
SPACING & SPACING ORDER NUMBER							
CLASS: Oil, Gas, Dry, Inj, Disp, Comm Disp, Svc	TA - Oil						
PERFORATED INTERVALS	Simpson-Dolomite						
	7206-7226						
	80 shots						
ACID/VOLUME							
FRACTURE TREATMENT (Fluids/Prop Amounts)							

Min Gas Allowable (165:10-17-7)

OR
Oil Allowable (165:10-13-3)

Gas Purchaser/Measurer
First Sales Date

INITIAL TEST DATA

INITIAL TEST DATE							
OIL-BBL/DAY							
OIL-GRAVITY (API)							
GAS-MCF/DAY							
GAS-OIL RATIO CU FT/BBL							
WATER-BBL/DAY							
PUMPING OR FLOWING							
INITIAL SHUT-IN PRESSURE							
CHOKE SIZE							
FLOW TUBING PRESSURE							

AS SUBMITTED

RECEIVED

SEP 28 2017

OKLAHOMA
CORPORATION COMMISSION
DUNCAN OFFICE

A record of the formations drilled through, and pertinent remarks are presented on the reverse. I declare that I have knowledge of the contents of this report and am authorized by my organization to make this report, which was prepared by me or under my supervision and direction, with the data and facts stated herein to be true, correct, and complete to the best of my knowledge and belief.

Scott Robinowitz, Vice President

9/25/2017 (918) 392-4413

SIGNATURE

NAME (PRINT OR TYPE)

DATE

PHONE NUMBER

2448 East 81st Street, Suite 4040

Tulsa

OK

74137

vicki@grandoil.com

ADDRESS

CITY

STATE

ZIP

EMAIL ADDRESS

PLEASE TYPE OR USE BLACK INK ONLY
FORMATION RECORD

Give formation names and tops, if available, or descriptions and thickness of formations drilled through. Show intervals cored or drillstem tested.

LEASE NAME Seiter WELL NO. 3

NAMES OF FORMATIONS	TOP
Simpson-Dolomite	7,206
Tulip Creek	7,637
Total Depth	7,640

FOR COMMISSION USE ONLY

ITD on file ☐ YES ☐ NO

APPROVED _____ DISAPPROVED _____

2) Reject Codes _____

Were open hole logs run? ☐ yes ☐ no

Date Last log was run _____

Was CO₂ encountered? ☐ yes ☐ no at what depths? _____

Was H₂S encountered? ☐ yes ☐ no at what depths? _____

Were unusual drilling circumstances encountered? ☐ yes ☐ no

If yes, briefly explain below _____

Other remarks: _____

640 Acres

If more than three drainholes are proposed, attach a separate sheet indicating the necessary information.

Direction must be stated in degrees azimuth.
Please note, the horizontal drainhole and its end point must be located within the boundaries of the lease or spacing unit.

Directional surveys are required for all drainholes and directional wells.

640 Acres

BOTTOM HOLE LOCATION FOR DIRECTIONAL HOLE

SEC	TWP	RGE	COUNTY
Spot Location	1/4	1/4	1/4
Feet From 1/4 Sec Lines	FSL	FWL	
Measured Total Depth	True Vertical Depth	BHL From Lease, Unit, or Property Line:	

BOTTOM HOLE LOCATION FOR HORIZONTAL HOLE: (LATERALS)

LATERAL #1

SEC	TWP	RGE	COUNTY
Spot Location	1/4	1/4	1/4
Feet From 1/4 Sec Lines	FSL	FWL	
Depth of Deviation	Radius of Turn	Direction	Total Length
Measured Total Depth	True Vertical Depth	BHL From Lease, Unit, or Property Line:	

LATERAL #2

SEC	TWP	RGE	COUNTY
Spot Location	1/4	1/4	1/4
Feet From 1/4 Sec Lines	FSL	FWL	
Depth of Deviation	Radius of Turn	Direction	Total Length
Measured Total Depth	True Vertical Depth	BHL From Lease, Unit, or Property Line:	

LATERAL #3

SEC	TWP	RGE	COUNTY
Spot Location	1/4	1/4	1/4
Feet From 1/4 Sec Lines	FSL	FWL	
Depth of Deviation	Radius of Turn	Direction	Total Length
Measured Total Depth	True Vertical Depth	BHL From Lease, Unit, or Property Line:	

RECEIVED

SEP 28 2017

OKLAHOMA CORPORATION COMMISSION
DUNCAN OFFICE