

Oklahoma Corporation Commission
Oil & Gas Conservation Division
Post Office Box 52000
Oklahoma City, Oklahoma 73152-2000
Rule 165: 10-3-25

Form 1002A

API No.: 35103242900001

Completion Report

Spud Date: September 07, 2011

OTC Prod. Unit No.: 103-207359

Drilling Finished Date: September 15, 2011

Amended

1st Prod Date: June 17, 2012

Amend Reason: RECOMPLETE

Completion Date: March 08, 2012

Recomplete Date: September 04, 2017

Drill Type: STRAIGHT HOLE

Well Name: GRACE 29

Purchaser/Measurer:

Location: NOBLE 30 24N 1W
C SE SE SW
330 FSL 2310 FWL of 1/4 SEC
Derrick Elevation: 967 Ground Elevation: 954

First Sales Date:

Operator: DONRAY PETROLEUM LLC 21690

2525 NW EXPRESSWAY STE 640
OKLAHOMA CITY, OK 73112-7230

Completion Type	
X	Single Zone
	Multiple Zone
	Commingled

Location Exception	
Order No	
There are no Location Exception records to display.	

Increased Density	
Order No	
There are no Increased Density records to display.	

Casing and Cement							
Type	Size	Weight	Grade	Feet	PSI	SAX	Top of CMT
SURFACE	8 5/8	32		245		150	SURFACE
PRODUCTION	5.5	17		4807		300	2050

Liner								
Type	Size	Weight	Grade	Length	PSI	SAX	Top Depth	Bottom Depth
There are no Liner records to display.								

Total Depth: 4835

Packer	
Depth	Brand & Type
There are no Packer records to display.	

Plug	
Depth	Plug Type
3300	CIBP
4400	CIBP
4500	CIBP
4807	CIBP

Initial Test Data

Test Date	Formation	Oil BBL/Day	Oil-Gravity (API)	Gas MCF/Day	Gas-Oil Ratio Cu FT/BBL	Water BBL/Day	Pumpin or Flowing	Initial Shut-In Pressure	Choke Size	Flow Tubing Pressure
Sep 04, 2017	HOOVER	40	40	60	1500	650	PUMPING	150		

Completion and Test Data by Producing Formation										
Formation Name: HOOVER				Code: 406HOVR				Class: OIL		
Spacing Orders				Perforated Intervals						
Order No		Unit Size		From			To			
582662		40		2008			2058			
Acid Volumes				Fracture Treatments						
750 GALLONS 12%				500 BSW, 25,000 POUNDS SAND						

Formation	Top
HOOVER	2000

Were open hole logs run? Yes
Date last log run: September 15, 2011

Were unusual drilling circumstances encountered? No
Explanation:

Other Remarks
There are no Other Remarks.

FOR COMMISSION USE ONLY
<div>Status: Accepted</div> <div>1138188</div>

API NO. 10324290
OTC PROD. UNIT NO. 103207359

PLEASE TYPE OR USE BLACK INK ONLY

NOTE:

Attach copy of original 1002A if recompletion or reentry.

OKLAHOMA CORPORATION COMMISSION
Oil & Gas Conservation Division
Post Office Box 52000
Oklahoma City, Oklahoma 73152-2000
Rule 165:10-3-25

RECEIVED

NOV 20 2017

OKLAHOMA CORPORATION COMMISSION

Form 1002A
Rev. 2009

☐ ORIGINAL
☒ AMENDED (Reason)

recomplete

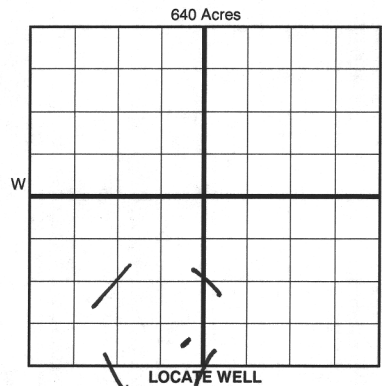
COMPLETION REPORT

TYPE OF DRILLING OPERATION
☒ STRAIGHT HOLE ☐ DIRECTIONAL HOLE ☐ HORIZONTAL HOLE
☐ SERVICE WELL

If directional or horizontal, see reverse for bottom hole location.

SPUD DATE 9-7-11
DRLG FINISHED DATE 9-15-11
DATE OF WELL COMPLETION 3-8-12
1st PROD DATE 6-17-12
RECOMP DATE 9-4-17
WELL NO. 29
FSL OF 1/4 SEC 330
FWL OF 1/4 SEC 2310
Latitude (if known)
Longitude (if known)
OTC/OCC OPERATOR NO. 21690

COUNTY noble SEC 30 TWP 24n RGE 1w
LEASE NAME grace
C 1/4 se 1/4 se 1/4 sw 1/4
ELEVATION 967 Ground 954
Derrick FL
OPERATOR NAME donray petroleum llc.
ADDRESS 2525 nw expressway # 640
CITY okc STATE ok ZIP 73112



COMPLETION TYPE

☒ SINGLE ZONE
☐ MULTIPLE ZONE
Application Date
COMMINGLED
Application Date
LOCATION
EXCEPTION ORDER
INCREASED DENSITY
ORDER NO.

CASING & CEMENT (Form 1002C must be attached)

TYPE	SIZE	WEIGHT	GRADE	FEET	PSI	SAX	TOP OF CMT
CONDUCTOR							
SURFACE	8 5/8	32		245		150	surface
INTERMEDIATE							
PRODUCTION	5.5	17		4807		300	2050
LINER							
				TOTAL DEPTH	4,835		

PACKER @ BRAND & TYPE PLUG @ 4807 TYPE cibp PLUG @ 4400 TYPE cibp
PACKER @ BRAND & TYPE PLUG @ 4500 TYPE cibp PLUG @ 3300 TYPE cibp

COMPLETION & TEST DATA BY PRODUCING FORMATION

FORMATION	hoover						
SPACING & SPACING ORDER NUMBER	582662 (40)						
CLASS: Oil, Gas, Dry, Inj, Disp, Comm Disp, Svc	oil						
PERFORATED INTERVALS	2008-18						
	2050-58						
ACID/VOLUME	750 gal 12%						
FRACTURE TREATMENT (Fluids/Prop Amounts)	500bsw						
	25,000# snd						

Monitor Report to Frac Faces

☐ Min Gas Allowable (165:10-17-7)
OR
☐ Oil Allowable (165:10-13-3)

Gas Purchaser/Measurer
First Sales Date

INITIAL TEST DATA

INITIAL TEST DATE	9/4/2017					
OIL-BBL/DAY	40 bpd					
OIL-GRAVITY (API)	40					
GAS-MCF/DAY	60 mcfpd					
GAS-OIL RATIO CU FT/BBL	1500					
WATER-BBL/DAY	650 pd					
PUMPING OR FLOWING	pump					
INITIAL SHUT-IN PRESSURE	150#					
CHOKE SIZE						
FLOW TUBING PRESSURE						

AS SUBMITTED

A record of the formations drilled through, and pertinent remarks are presented on the reverse. I declare that I have knowledge of the contents of this report and am authorized by my organization to make this report, which was prepared by me or under my supervision and direction, with the data and facts stated herein to be true, correct, and complete to the best of my knowledge and belief.

ray corbitt jr.

11/16/2017 (405) 418-4348

SIGNATURE

NAME (PRINT OR TYPE)

DATE

PHONE NUMBER

2525 nw expressway # 640

okc

ok

73112

ray@donraypetroleum.com

ADDRESS

CITY

STATE

ZIP

EMAIL ADDRESS

Give formation names and tops, if available, or descriptions and thickness of formations drilled through. Show intervals cored or drillstem tested.

WELL NO. 29

NAMES OF FORMATIONS	TOP
hoover	2,000

FOR COMMISSION USE ONLY	
ITD on file	<input type="checkbox"/> YES <input type="checkbox"/> NO
APPROVED	DISAPPROVED
<div style="border-bottom: 1px solid black; margin-bottom: 5px;"></div>	2) Reject Codes <div style="border-bottom: 1px solid black; margin-bottom: 5px;"></div> <div style="border-bottom: 1px solid black; margin-bottom: 5px;"></div> <div style="border-bottom: 1px solid black; margin-bottom: 5px;"></div> <div style="border-bottom: 1px solid black; margin-bottom: 5px;"></div> <div style="border-bottom: 1px solid black; margin-bottom: 5px;"></div>

Were open hole logs run? X yes ___ no

Date Last log was run 9/15/2011

Was CO₂ encountered? ___ yes X no at what depths? _____

Was H₂S encountered? ___ yes X no at what depths? _____

Were unusual drilling circumstances encountered? ___ yes X no
If yes, briefly explain below

Other remarks:

640 Acres

A 10x10 grid representing 640 acres. The grid is divided into four 5x5 quadrants by a thick black cross. The top-left quadrant is shaded light blue. The top-right quadrant is shaded light green. The bottom-left quadrant is shaded light orange. The bottom-right quadrant is shaded light purple. The text '640 Acres' is written in black at the top center of the grid.

If more than three drainholes are proposed, attach a separate sheet indicating the necessary information.

Direction must be stated in degrees azimuth.
Please note, the horizontal drainhole and its end point must be located within the boundaries of the lease or spacing unit.

Directional surveys are required for all drainholes and directional wells.

640 Acres

SEC	TWP	RGE	COUNTY						
Spot Location			1/4	1/4	1/4	1/4	Feet From 1/4 Sec Lines	FSL	FWL
Measured Total Depth		True Vertical Depth		BHL From Lease, Unit, or Property Line:					

LATERAL #1						
SEC	TWP	RGE	COUNTY			
Spot Location						
1/4	1/4	1/4	1/4	Feet From 1/4 Sec Lines	FSL	FWL
Depth of Deviation		Radius of Turn		Direction	Total Length	
Measured Total Depth		True Vertical Depth		BHL From Lease, Unit, or Property Line:		

SEC	TWP	RGE	COUNTY			
Spot Location						
1/4	1/4	1/4	1/4	Feet From 1/4 Sec Lines	FSL	FWL
Depth of Deviation		Radius of Turn		Direction	Total Length	
Measured Total Depth		True Vertical Depth		BHL From Lease, Unit, or Property Line:		

CRATER #3						
SEC	TWP	RGE	COUNTY			
Spot Location						
1/4	1/4	1/4	1/4	Feet From 1/4 Sec Lines	FSL	FWL
Depth of Deviation		Radius of Turn		Direction	Total Length	
Measured Total Depth		True Vertical Depth		BHL From Lease, Unit, or Property Line:		