

Oklahoma Corporation Commission
Oil & Gas Conservation Division
Post Office Box 52000
Oklahoma City, Oklahoma 73152-2000
Rule 165: 10-3-25

Form 1002A

API No.: 35103242890001

Completion Report

Spud Date: August 26, 2011

OTC Prod. Unit No.: 103-207986

Drilling Finished Date: September 04, 2011

Amended

1st Prod Date: October 18, 2012

Amend Reason: RECOMPLETE

Completion Date: June 29, 2012

Recomplete Date: June 24, 2015

Drill Type: STRAIGHT HOLE

Well Name: GRACE 27

Purchaser/Measurer:

Location: NOBLE 30 24N 1W
E2 SW SW SW
330 FSL 560 FWL of 1/4 SEC
Derrick Elevation: 983 Ground Elevation: 970

First Sales Date:

Operator: DONRAY PETROLEUM LLC 21690

2525 NW EXPRESSWAY STE 640
OKLAHOMA CITY, OK 73112-7230

Completion Type	
X	Single Zone
	Multiple Zone
	Commingled

Location Exception	
Order No	
There are no Location Exception records to display.	

Increased Density	
Order No	
There are no Increased Density records to display.	

Casing and Cement							
Type	Size	Weight	Grade	Feet	PSI	SAX	Top of CMT
SURFACE	8 5/8	32		245		150	SURFACE
PRODUCTION	5.5	17		4796		250	3000

Liner								
Type	Size	Weight	Grade	Length	PSI	SAX	Top Depth	Bottom Depth
There are no Liner records to display.								

Total Depth: 4856

Packer	
Depth	Brand & Type
There are no Packer records to display.	

Plug	
Depth	Plug Type
2740	CEMENT RETAINER
3300	CIBP
4796	CIBP

Initial Test Data

Test Date	Formation	Oil BBL/Day	Oil-Gravity (API)	Gas MCF/Day	Gas-Oil Ratio Cu FT/BBL	Water BBL/Day	Pumpin or Flowing	Initial Shut-In Pressure	Choke Size	Flow Tubing Pressure
Jun 24, 2015	TONKAWA	3	40	10	3333	900	PUMPING	30		

Completion and Test Data by Producing Formation

Formation Name: TONKAWA

Code: 406TNKW

Class: OIL

Spacing Orders

Order No

Unit Size

582662

40

Perforated Intervals

From

To

2706

2730

Acid Volumes

750 GALLONS 10% HCL

Fracture Treatments

There are no Fracture Treatments records to display.

Formation	Top
TONKAWA	2450

Were open hole logs run? Yes

Date last log run: September 04, 2011

Were unusual drilling circumstances encountered? No

Explanation:

Other Remarks

CEMENT SQUEEZE 2,748' - 2,750'. CEMENT RETAINER AT 2,740'. (ATTENTION OCC - WHILE REVIEWING THIS WELL FILE, I DISCOVERED WE FAILED TO FILE RECOMPLETE FORMS IN 2015. RAY CORBITT, JR.)

FOR COMMISSION USE ONLY

Status: Accepted

1138187

API NO. 10324289
OTC PROD. UNIT NO. 103207986

PLEASE TYPE OR USE BLACK INK ONLY
NOTE:

Attach copy of original 1002A
if recompletion or reentry.

OKLAHOMA CORPORATION COMMISSION
Oil & Gas Conservation Division
Post Office Box 52000
Oklahoma City, Oklahoma 73152-2000
Rule 165:10-3-25

RECEIVED

NOV 20 2017

OKLAHOMA CORPORATION
COMMISSION

☐ ORIGINAL
☒ AMENDED (Reason)

recomplete

COMPLETION REPORT

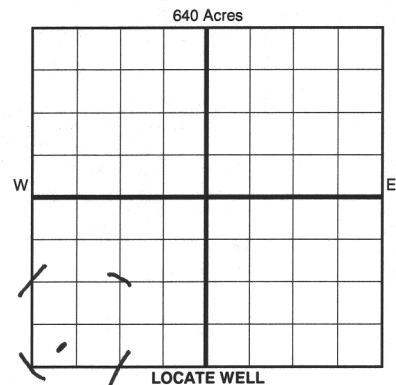
TYPE OF DRILLING OPERATION

☒ STRAIGHT HOLE ☐ DIRECTIONAL HOLE ☐ HORIZONTAL HOLE
☐ SERVICE WELL

If directional or horizontal, see reverse for bottom hole location.

SPUD DATE 8-26-11
DRLG FINISHED DATE 9-4-11
DATE OF WELL COMPLETION 6-29-12
1st PROD DATE 10-18-12
RECOMP DATE 6-24-15
WELL NO. 27
FSL OF 1/4 SEC 330
FWL OF 1/4 SEC 560
ELEVATION 983
Derrick FL 970
Latitude (if known)
Longitude (if known)
OTC/OCC OPERATOR NO. 21690

COUNTY noble SEC 30 TWP 24n RGE 1w
LEASE NAME grace
e2 1/4 SW 1/4 SW 1/4 SW 1/4
OPERATOR NAME donray petroleum llc.
ADDRESS 2525 nw expressway #640
CITY okc STATE okla ZIP 73112



COMPLETION TYPE

☒ SINGLE ZONE
☐ MULTIPLE ZONE
Application Date
COMINGLED
Application Date
LOCATION
EXCEPTION ORDER
INCREASED DENSITY
ORDER NO.

CASING & CEMENT (Form 1002C must be attached)

TYPE	SIZE	WEIGHT	GRADE	FEET	PSI	SAX	TOP OF CMT
CONDUCTOR							
SURFACE	8 5/8	32		245		150	surface
INTERMEDIATE							
PRODUCTION	5.5	17		4796		250	3000
LINER							
TOTAL DEPTH							4,856

PACKER @ BRAND & TYPE PLUG @ 4796 TYPE cibp PLUG @ 2740 TYPE cement
PACKER @ BRAND & TYPE PLUG @ 3300 TYPE cibp PLUG @ TYPE Cement Retained

COMPLETION & TEST DATA BY PRODUCING FORMATION

FORMATION	tonkawa					No Frac
SPACING & SPACING ORDER NUMBER	582662 (40)					
CLASS: Oil, Gas, Dry, Inj, Disp, Comm Disp, Svc	oil					
PERFORATED INTERVALS	2706-10/ 22-30					
ACID/VOLUME	750 gal 10% hcl					
FRACTURE TREATMENT (Fluids/Prop Amounts)						

Min Gas Allowable (165:10-17-7)

Gas Purchaser/Measurer



OR

First Sales Date

Oil Allowable (165:10-13-3)

INITIAL TEST DATA

INITIAL TEST DATE	6/24/2015				
OIL-BBL/DAY	3 bpd				
OIL-GRAVITY (API)	40				
GAS-MCF/DAY	10mcf				
GAS-OIL RATIO CU FT/BBL	3333				
WATER-BBL/DAY	900				
PUMPING OR FLOWING	pump				
INITIAL SHUT-IN PRESSURE	30#				
CHOKE SIZE					
FLOW TUBING PRESSURE					

AS SUBMITTED

A record of the formations drilled through, and pertinent remarks are presented on the reverse. I declare that I have knowledge of the contents of this report and am authorized by my organization to make this report, which was prepared by me or under my supervision and direction, with the data and facts stated herein to be true, correct, and complete to the best of my knowledge and belief.

ray corbitt jr

11/16/2017 (405) 418-4348

SIGNATURE

NAME (PRINT OR TYPE)

DATE

PHONE NUMBER

2525 nw expressway#640

okc

ok

73112

ray@donraypetroleum.com

ADDRESS

CITY

STATE

ZIP

EMAIL ADDRESS

Give formation names and tops, if available, or descriptions and thickness of formations drilled through. Show intervals cored or drillstem tested.

WELL NO. 27

NAMES OF FORMATIONS	TOP
tonkawa	2,450

FOR COMMISSION USE ONLY	
ITD on file	<input type="checkbox"/> YES <input type="checkbox"/> NO
APPROVED	DISAPPROVED
2) Reject Codes	

[illegible]

Other remarks: cement squeeze 2748-50 cmt retainer at 2740

(att occ while reviewing this well file I discovered we failed to file recompleate forms in 2015 ray corbitt jr.)

640 Acres

If more than three drainholes are proposed, attach a separate sheet indicating the necessary information.

Direction must be stated in degrees azimuth.
Please note, the horizontal drainhole and its end point must be located within the boundaries of the lease or spacing unit.

Directional surveys are required for all drainholes and directional wells.

640 Acres

A 10x10 grid representing 640 acres. The grid is divided into four 5x5 quadrants by a thick black cross. The top-left quadrant is shaded light blue, the top-right quadrant is shaded light green, the bottom-left quadrant is shaded light orange, and the bottom-right quadrant is shaded light purple. The text '640 Acres' is centered above the grid.

SEC	TWP	RGE	COUNTY
Spot Location			
1/4	1/4	1/4	1/4
Measured Total Depth		True Vertical Depth	
		Feet From 1/4 Sec Lines	
		FSL	FWL
BHL From Lease, Unit, or Property Line:			

LATERAL #1						
SEC	TWP	RGE	COUNTY			
Spot Location				Feet From 1/4 Sec Lines	FSL	FWL
1/4	1/4	1/4	1/4			
Depth of Deviation		Radius of Turn	Direction	Total Length		
Measured Total Depth		True Vertical Depth	BHL From Lease, Unit, or Property Line:			

SEC	TWP	RGE	COUNTY			
Spot Location						
1/4	1/4	1/4	1/4	Feet From 1/4 Sec Lines	FSL	FWL
Depth of Deviation		Radius of Turn		Direction	Total Length	
Measured Total Depth		True Vertical Depth		BHL From Lease, Unit, or Property Line:		

SEC	TWP	RGE	COUNTY			
Spot Location				Feet From 1/4 Sec Lines	FSL	FWL
1/4	1/4	1/4	1/4			
Depth of Deviation		Radius of Turn	Direction	Total Length		
Measured Total Depth		True Vertical Depth	BHL From Lease, Unit, or Property Line:			