

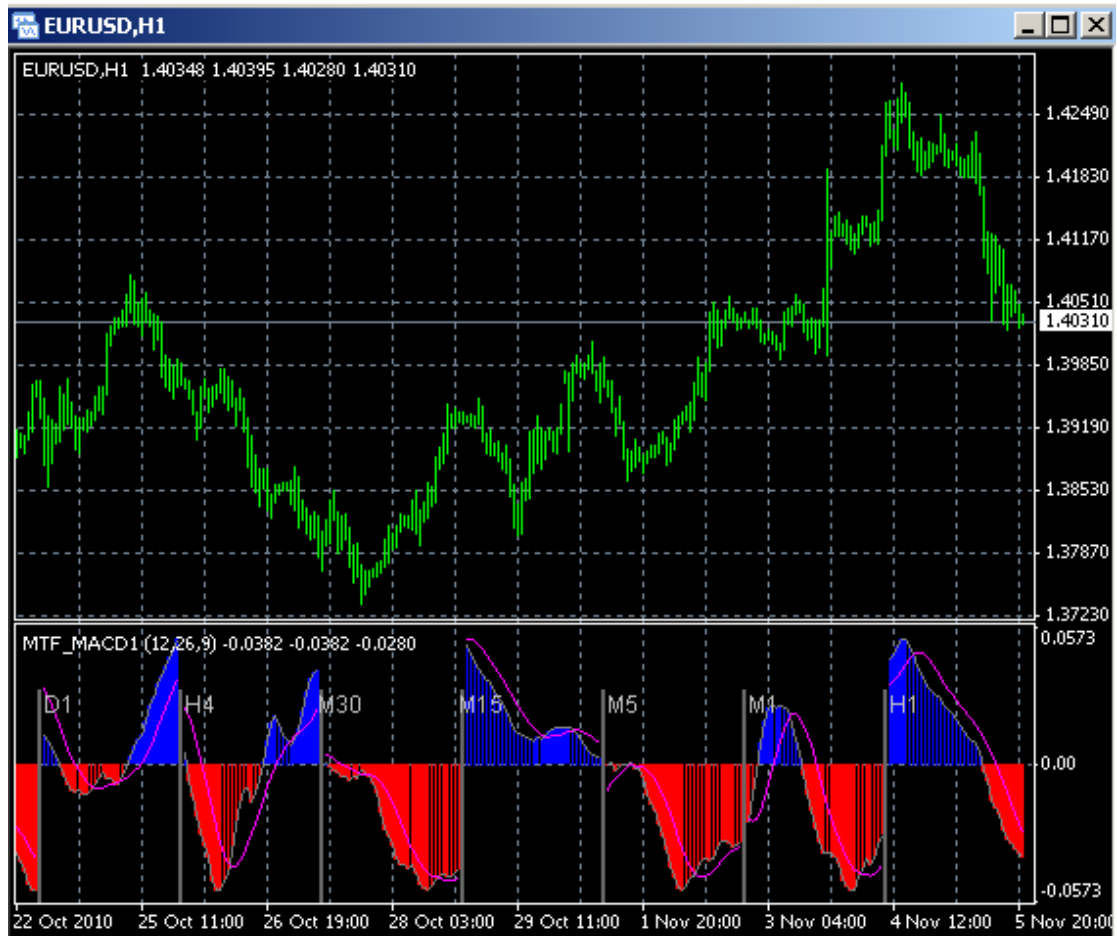
# Multi-Timeframe MACD

## Installation

- Copy file MTF\_MACD.ex4 into your MetaTrader 4 indicator folder. It's usually located at C:\Program Files\MetaTrader 4\experts\indicators
- Start Meta Trader 4 and from the top menu, choose Insert->Indicators->Custom->MTF\_MACD or drag it from the Navigator Panel on the left hand side onto the chart Window

## How to use it

- This indicator displays a snapshot of MACD indicator in different timeframes.
- The current timeframe snapshot will be displayed first.
- Scroll the chart to the left to see all other timeframe snapshots.
- Change the settings to whatever that suit your trading style



Thank you!

Best regards

Karl Dittmann