

Oklahoma Corporation Commission  
Oil & Gas Conservation Division  
Post Office Box 52000  
Oklahoma City, Oklahoma 73152-2000  
Rule 165: 10-3-25

Form 1002A

API No.: 35053234570000

**Completion Report**

Spud Date: September 23, 2017

OTC Prod. Unit No.:

Drilling Finished Date: October 01, 2017

1st Prod Date:

Completion Date: October 23, 2017

**Drill Type: STRAIGHT HOLE**

Well Name: CARSON 1-17

Purchaser/Measurer:

Location: GRANT 17 29N 3W  
N2 S2 S2 NE  
495 FSL 1320 FEL of 1/4 SEC  
Latitude: 36.5937641 Longitude: -97.3219866  
Derrick Elevation: 1089 Ground Elevation: 1078

First Sales Date:

Operator: RAMSEY PROPERTY MANAGEMENT LLC 20995

2932 NW 122ND ST STE 4  
OKLAHOMA CITY, OK 73120-1955

Completion Type	
X	Single Zone
	Multiple Zone
	Commingled

Location Exception
Order No
There are no Location Exception records to display.

Increased Density
Order No
There are no Increased Density records to display.

Casing and Cement							
Type	Size	Weight	Grade	Feet	PSI	SAX	Top of CMT
CONDUCTOR	20	94	H-40	60		6	SURFACE
SURFACE	8 5/8	24	J-55	326	1200	200	SURFACE
PRODUCTION	5 1/2	17	L-80	4775	1865	155	3602

Liner								
Type	Size	Weight	Grade	Length	PSI	SAX	Top Depth	Bottom Depth
There are no Liner records to display.								

**Total Depth: 4785**

Packer	
Depth	Brand & Type
There are no Packer records to display.	

Plug	
Depth	Plug Type
There are no Plug records to display.	

Initial Test Data
-------------------

Test Date	Formation	Oil BBL/Day	Oil-Gravity (API)	Gas MCF/Day	Gas-Oil Ratio Cu FT/BBL	Water BBL/Day	Pumpin or Flowing	Initial Shut-In Pressure	Choke Size	Flow Tubing Pressure
Dec 01, 2017	MISSISSIPPI					640	PUMPING	15		

Completion and Test Data by Producing Formation

Formation Name: MISSISSIPPI

Code: 351MISS

Class: DRY

Spacing Orders

Order No

Unit Size

UNSPACED

Perforated Intervals

From

To

4692

4706

Acid Volumes

4,000 GALLONS 15% HCL

Fracture Treatments

9,973 BARRELS SLICK WATER, 254,216 POUNDS 30/50 SAND

Formation	Top
TONKAWA	3196
COTTAGE GROVE	3541
HOGSHOOTER	3724
OSWEGO	3908
MISSISSIPPI CHAT	4355
OSAGE (BASAL MISSISSIPPI)	4641

Were open hole logs run? Yes

Date last log run: October 01, 2017

Were unusual drilling circumstances encountered? Yes

Explanation: LOST CIRCULATION IN BASAL MISSISSIPPI

Other Remarks

OCC - OPERATOR SHOWS WELL MADE A TRACE OF OIL.

FOR COMMISSION USE ONLY

Status: Accepted

1138557

API NO. 053-23457  
OTC PROD.  
UNIT NO.

PLEASE TYPE OR USE BLACK INK ONLY

NOTE:

Attach copy of original 1002A  
if recompletion or reentry.

OKLAHOMA CORPORATION COMMISSION

Oil & Gas Conservation Division  
Post Office Box 52000  
Oklahoma City, Oklahoma 73152-2000  
Rule 165:10-3-25

RECEIVED

JAN 12 2018

OKLAHOMA CORPORATION  
COMMISSION

Form 1002A  
Rev. 2009

☒ ORIGINAL  
☐ AMENDED (Reason)

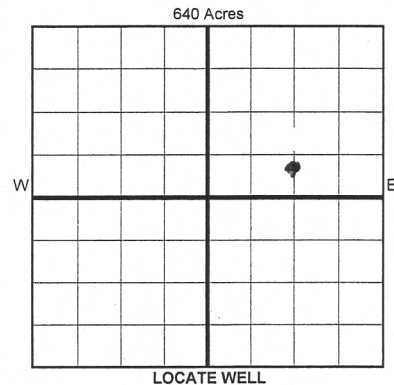
COMPLETION REPORT

TYPE OF DRILLING OPERATION

☒ STRAIGHT HOLE ☐ DIRECTIONAL HOLE ☐ HORIZONTAL HOLE  
☐ SERVICE WELL

If directional or horizontal, see reverse for bottom hole location.

COUNTY	Grant	SEC	17	TWP	29N	RGE	3W	SPUD DATE	9/23/17
LEASE NAME	Carson	WELL NO.	1-17	DRLG FINISHED DATE	10/1/17	DATE OF WELL COMPLETION			10/23/17
N/2 1/4 S/2 1/4 S/2 1/4 NE 1/4	FSL OF 1/4 SEC	495'	FW 1/4 SEC	1320'	1st PROD DATE				
ELEVATION Derrick FL	1089'	Ground	1078'	Latitude (if known)	36.5937641	Longitude (if known)		-97.3219866	RECOMP DATE
OPERATOR NAME	Ramsey Property Management, LLC				OTC/OCC OPERATOR NO.	20995-0			
ADDRESS	2932 NW 122nd Street, Suite 4								
CITY	Oklahoma City	STATE	OK	ZIP	73120				



COMPLETION TYPE

<input checked="" type="checkbox"/> SINGLE ZONE
<input type="checkbox"/> MULTIPLE ZONE
<input type="checkbox"/> COMMINGLED
<input type="checkbox"/> LOCATION EXCEPTION ORDER
<input type="checkbox"/> INCREASED DENSITY ORDER NO.

CASING & CEMENT (Form 1002C must be attached)

TYPE	SIZE	WEIGHT	GRADE	FEET	PSI	SAX	TOP OF CMT
CONDUCTOR	20"	94#	H-40	60'		6 yds	surface
SURFACE	8-5/8"	24#	J-55	326'	1200	200	surface
INTERMEDIATE							
PRODUCTION	5*-1/2"	17#	L-80	4775'	1865	155	3602'
LINER							
TOTAL DEPTH							4785'

PACKER @ \_\_\_\_\_ BRAND & TYPE \_\_\_\_\_ PLUG @ \_\_\_\_\_ TYPE \_\_\_\_\_ PLUG @ \_\_\_\_\_ TYPE \_\_\_\_\_  
PACKER @ \_\_\_\_\_ BRAND & TYPE \_\_\_\_\_ PLUG @ \_\_\_\_\_ TYPE \_\_\_\_\_ PLUG @ \_\_\_\_\_ TYPE \_\_\_\_\_

COMPLETION & TEST DATA BY PRODUCING FORMATION

FORMATION	Basal Mississippi								
SPACING & SPACING ORDER NUMBER	unspaced								
CLASS: Oil, Gas, Dry, Inj, Disp, Comm Disp, Svc	Dry								
PERFORATED INTERVALS	4692' - 4706'								
ACID/VOLUME	4000 gals 15 % HCL								
FRACTURE TREATMENT (Fluids/Prop Amounts)	9973 Bbbs Slick Water								
	254216# 30/50 Sand								

Monitor  
Report to FracFocus

Min Gas Allowable (165:10-17-7) \_\_\_\_\_ Gas Purchaser/Measurer \_\_\_\_\_  
OR \_\_\_\_\_ First Sales Date \_\_\_\_\_  
Oil Allowable (165:10-13-3) \_\_\_\_\_

INITIAL TEST DATA

INITIAL TEST DATE	12/1/2017						
OIL-BBL/DAY	Trace						
OIL-GRAVITY ( API)							
GAS-MCF/DAY	0						
GAS-OIL RATIO CU FT/BBL							
WATER-BBL/DAY	640						
PUMPING OR FLOWING	Pumping						
INITIAL SHUT-IN PRESSURE	15						
CHOKE SIZE							
FLOW TUBING PRESSURE	0						

AS SUBMITTED

A record of the formations drilled through, and pertinent remarks are presented on the reverse. I declare that I have knowledge of the contents of this report and am authorized by my organization to make this report, which was prepared by me or under my supervision and direction, with the data and facts stated herein to be true, correct, and complete to the best of my knowledge and belief.

SIGNATURE: Stephen E. Nichols NAME (PRINT OR TYPE): Stephen E Nichols DATE: 1/12/18 PHONE NUMBER: 405-302-6200  
ADDRESS: 2932 NW 122nd St., Suite 4 CITY: Oklahoma City STATE: OK ZIP: 73120 EMAIL ADDRESS: senichols1@ramseyllc.com

PLEASE TYPE OR USE BLACK INK ONLY  
FORMATION RECORD

Give formation names and tops, if available, or descriptions and thickness of formations drilled through. Show intervals cored or drillstem tested.

NAMES OF FORMATIONS	TOP
Tonkawa	3196'
Cottage Grove	3541'
Hogshooter	3724'
Oswego	3908'
Mississippi Chat	4355'
osage (basal Mississippi)	4641'

LEASE NAME Carson WELL NO. 1-17

FOR COMMISSION USE ONLY	
ITD on file <input type="checkbox"/> YES <input type="checkbox"/> NO	
APPROVED _____ DISAPPROVED _____	2) Reject Codes

Were open hole logs run?	<u>X</u> yes <u> </u> no
Date Last log was run	<u>10/1/2017</u>
Was CO <sub>2</sub> encountered?	<u> </u> yes <u>X</u> no at what depths? _____
Was H <sub>2</sub> S encountered?	<u> </u> yes <u>X</u> no at what depths? _____
Were unusual drilling circumstances encountered?	<u>X</u> yes <u> </u> no
If yes, briefly explain below Lost Circulation in Basal Mississippi	

Other remarks:

640 Acres


If more than three drainholes are proposed, attach a separate sheet indicating the necessary information.

Direction must be stated in degrees azimuth.  
Please note, the horizontal drainhole and its end point must be located within the boundaries of the lease or spacing unit.

Directional surveys are required for all drainholes and directional wells.

640 Acres


BOTTOM HOLE LOCATION FOR DIRECTIONAL HOLE

SEC	TWP	RGE	COUNTY			
Spot Location				Feet From 1/4 Sec Lines	FSL	FWL
1/4		1/4	1/4	1/4		
Measured Total Depth		True Vertical Depth		BHL From Lease, Unit, or Property Line:		

BOTTOM HOLE LOCATION FOR HORIZONTAL HOLE: (LATERALS)

LATERAL #1						
SEC	TWP	RGE	COUNTY			
Spot Location				Feet From 1/4 Sec Lines	FSL	FWL
1/4		1/4	1/4	1/4		
Depth of Deviation		Radius of Turn		Direction	Total Length	
Measured Total Depth		True Vertical Depth		BHL From Lease, Unit, or Property Line:		

LATERAL #2						
SEC	TWP	RGE	COUNTY			
Spot Location				Feet From 1/4 Sec Lines	FSL	FWL
1/4		1/4	1/4	1/4		
Depth of Deviation		Radius of Turn		Direction	Total Length	
Measured Total Depth		True Vertical Depth		BHL From Lease, Unit, or Property Line:		

LATERAL #3						
SEC	TWP	RGE	COUNTY			
Spot Location				Feet From 1/4 Sec Lines	FSL	FWL
1/4		1/4	1/4	1/4		
Depth of Deviation		Radius of Turn		Direction	Total Length	
Measured Total Depth		True Vertical Depth		BHL From Lease, Unit, or Property Line:		