

Oklahoma Corporation Commission
Oil & Gas Conservation Division
Post Office Box 52000
Oklahoma City, Oklahoma 73152-2000
Rule 165: 10-3-25

Form 1002A

API No.: 35133106480001

Completion Report

Spud Date: August 15, 1958

OTC Prod. Unit No.: 133-052357

Drilling Finished Date: August 24, 1958

1st Prod Date: September 09, 1958

Completion Date: September 09, 1958

Amended

Amend Reason: SHOW FOOTAGE LOCATION / CORRECT DEPTH 7" CASING / PUT WELL
BACK ON PRODUCTION

Drill Type: STRAIGHT HOLE

Well Name: ROGERS "B" 1

Purchaser/Measurer:

Location: SEMINOLE 33 10N 8E
C SW NW SE
1650 FSL 330 FWL of 1/4 SEC
Derrick Elevation: 935 Ground Elevation: 0

First Sales Date:

Operator: D J F SERVICES INC 19836
PO BOX 150
3230 NS 3715
HOLDENVILLE, OK 74848-0150

Completion Type		Location Exception		Increased Density	
X	Single Zone	Order No		Order No	
	Multiple Zone	There are no Location Exception records to display.		There are no Increased Density records to display.	
	Commingled				

Casing and Cement							
Type	Size	Weight	Grade	Feet	PSI	SAX	Top of CMT
SURFACE	10 3/4			103		85	SURFACE
PRODUCTION	7			3205		85	

Liner								
Type	Size	Weight	Grade	Length	PSI	SAX	Top Depth	Bottom Depth
There are no Liner records to display.								

Total Depth: 3222

Packer		Plug	
Depth	Brand & Type	Depth	Plug Type
There are no Packer records to display.		There are no Plug records to display.	

Initial Test Data										
Test Date	Formation	Oil BBL/Day	Oil-Gravity (API)	Gas MCF/Day	Gas-Oil Ratio Cu FT/BBL	Water BBL/Day	Pumpin or Flowing	Initial Shut-In Pressure	Choke Size	Flow Tubing Pressure
Dec 20, 2017	BOOCH	5	38			140	PUMPING			

Completion and Test Data by Producing Formation

Formation Name: BOOCH

Code: 404BOCH

Class: OIL

Spacing Orders

Order No	Unit Size
455912	40

Perforated Intervals

From	To
There are no Perf. Intervals records to display.	

Acid Volumes

There are no Acid Volume records to display.	
--	--

Fracture Treatments

There are no Fracture Treatments records to display.	
--	--

Formation	Top
BOOCH	3203

Were open hole logs run? Yes

Date last log run:

Were unusual drilling circumstances encountered? No

Explanation:

Other Remarks

PUT EQUIPMENT BACK ON THE WELL, PUT BACK TO PUMPING. NO TREATMENTS. OCC - THIS WELL IS AN OPEN HOLE COMPLETION FROM BOTTOM OF THE 7" CASING AT 3,205' TO TOTAL DEPTH AT 3,222.

FOR COMMISSION USE ONLY

1138584

Status: Accepted

API NO. 133-10648

PLEASE TYPE OR USE BLACK INK ONLY

OTC PROD. UNIT NO. 133-052357

NOTE:

Attach copy of original 1002A if recompletion or reentry.

OKLAHOMA CORPORATION COMMISSION

Oil & Gas Conservation Division

Post Office Box 52000

Oklahoma City, Oklahoma 73152-2000

RECEIVED

JAN 16 2018

Form 1002A
Rev. 2009☐ ORIGINAL
☒ AMENDED (Reason)

NEW OPERATOR

Correct Depth 165-10-3-25

Put well back on production

COMPLETION REPORT

TYPE OF DRILLING OPERATION

☒ STRAIGHT HOLE ☐ DIRECTIONAL HOLE ☐ HORIZONTAL HOLE
☐ SERVICE WELL

If directional or horizontal, see reverse for bottom hole location.

COUNTY SEMINOLE SEC 33 TWP 10N RGE 08E

LEASE NAME ROGERS "B"

WELL NO. 1

DATE OF WELL COMPLETION 9-9-58

1st PROD DATE 9-9-58

C 1/4 SW 1/4 NW 1/4 SE 1/4

FSL OF 1/4 SEC 1650

FWL OF 1/4 SEC 330

RECOMP DATE

ELEVATION 935 Ground

Latitude (if known)

Longitude (if known)

OPERATOR NAME D.J.F. SERVICES, INC.

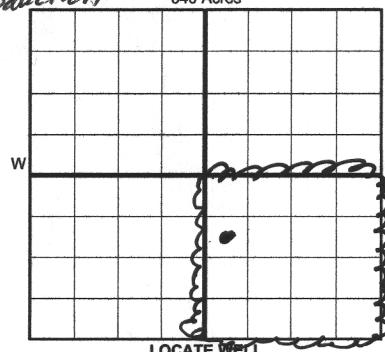
OTC/OCC OPERATOR NO. 19836-0

ADDRESS PO BOX 150

CITY HOLDENVILLE

STATE OK

ZIP 74848



COMPLETION TYPE

<input checked="" type="checkbox"/>	SINGLE ZONE
<input type="checkbox"/>	MULTIPLE ZONE
<input type="checkbox"/>	Application Date
<input type="checkbox"/>	COMINGLED
<input type="checkbox"/>	Application Date
<input type="checkbox"/>	LOCATION
<input type="checkbox"/>	EXCEPTION ORDER
<input type="checkbox"/>	INCREASED DENSITY
<input type="checkbox"/>	ORDER NO.

CASING & CEMENT (Form 1002C must be attached)

TYPE	SIZE	WEIGHT	GRADE	FEET	PSI	SAX	TOP OF CMT
CONDUCTOR							
SURFACE	10 3/4			103		85	surface
INTERMEDIATE							
PRODUCTION	7"			3205		85	
LINER							
						TOTAL DEPTH	3222

PACKER @ _____ BRAND & TYPE _____

PLUG @ _____

TYPE _____

PLUG @ _____

TYPE _____

PACKER @ _____ BRAND & TYPE _____

PLUG @ _____

TYPE _____

PLUG @ _____

TYPE _____

COMPLETION & TEST DATA BY PRODUCING FORMATION

FORMATION	BOOCH						No Frac
SPACING & SPACING ORDER NUMBER	(40) 455912						
CLASS: Oil, Gas, Dry, Inj, Disp, Comm Disp, Svc	OIL						
PERFORATED INTERVALS	open hole 3203-3222 ft						
ACID/VOLUME							
FRACTURE TREATMENT (Fluids/Prop Amounts)							

Min Gas Allowable

(165:10-17-7)

Gas Purchaser/Measurer



OR

First Sales Date

Oil Allowable

(165:10-13-3)

INITIAL TEST DATA

INITIAL TEST DATE	12-20-17				
OIL-BBL/DAY	5				
OIL-GRAVITY (API)	38°				
GAS-MCF/DAY	TRACE				
GAS-OIL RATIO CU FT/BBL					
WATER-BBL/DAY	140				
PUMPING OR FLOWING	Pumping				
INITIAL SHUT-IN PRESSURE					
CHOKE SIZE					
FLOW TUBING PRESSURE					

AS SUBMITTED

A record of the formations drilled through, and pertinent remarks are presented on the reverse. I declare that I have knowledge of the contents of this report and am authorized by my organization to make this report, which was prepared by me or under my supervision and direction, with the data and facts stated herein to be true, correct, and complete to the best of my knowledge and belief.

Signature: Donald J. Flint

NAME (PRINT OR TYPE) DONALD J. FLINT

DATE 1/11/18 405-379-7207

ADDRESS PO BOX 150 Holdenville

CITY OK 74848

EMAIL ADDRESS DONALD.J.FLINT@GMAIL.COM

PLEASE TYPE OR USE BLACK INK ONLY
FORMATION RECORD

Give formation names and tops, if available, or descriptions and thickness of formations drilled through. Show intervals cored or drillstem tested.

NAMES OF FORMATIONS	TOP
BOOCH	3203

LEASE NAME ROGERS "B" WELL NO. 1

FOR COMMISSION USE ONLY	
ITD on file <input type="checkbox"/> YES <input type="checkbox"/> NO	
APPROVED _____	DISAPPROVED _____
2) Reject Codes	

Were open hole logs run?	<input checked="" type="checkbox"/> yes <input type="checkbox"/> no
Date Last log was run	_____
Was CO ₂ encountered?	<input type="checkbox"/> yes <input checked="" type="checkbox"/> no at what depths? _____
Was H ₂ S encountered?	<input type="checkbox"/> yes <input checked="" type="checkbox"/> no at what depths? _____
Were unusual drilling circumstances encountered?	<input type="checkbox"/> yes <input type="checkbox"/> no
If yes, briefly explain below _____	

Other remarks:

Put equipment back on the well put back to pumping.
No treatments
OCC - This well is an open hole completion from bottom of the 7" casing at 3205' to total depth at 3222'.

640 Acres

If more than three drainholes are proposed, attach a separate sheet indicating the necessary information.

Direction must be stated in degrees azimuth. Please note, the horizontal drainhole and its end point must be located within the boundaries of the lease or spacing unit.

Directional surveys are required for all drainholes and directional wells.

640 Acres

BOTTOM HOLE LOCATION FOR DIRECTIONAL HOLE

SEC	TWP	RGE	COUNTY
Spot Location			
1/4	1/4	1/4	1/4
Measured Total Depth		True Vertical Depth	Feet From 1/4 Sec Lines FSL FWL
BHL From Lease, Unit, or Property Line:			

BOTTOM HOLE LOCATION FOR HORIZONTAL HOLE: (LATERALS)

LATERAL #1			
SEC	TWP	RGE	COUNTY
Spot Location			
1/4	1/4	1/4	1/4
Depth of Deviation	Radius of Turn		Direction
Measured Total Depth	True Vertical Depth		Total Length
BHL From Lease, Unit, or Property Line:			

LATERAL #2			
SEC	TWP	RGE	COUNTY
Spot Location			
1/4	1/4	1/4	1/4
Depth of Deviation	Radius of Turn		Direction
Measured Total Depth	True Vertical Depth		Total Length
BHL From Lease, Unit, or Property Line:			

LATERAL #3			
SEC	TWP	RGE	COUNTY
Spot Location			
1/4	1/4	1/4	1/4
Depth of Deviation	Radius of Turn		Direction
Measured Total Depth	True Vertical Depth		Total Length
BHL From Lease, Unit, or Property Line:			