

Oklahoma Corporation Commission
Oil & Gas Conservation Division
Post Office Box 52000
Oklahoma City, Oklahoma 73152-2000
Rule 165: 10-3-25

Form 1002A

API No.: 35073257750000

Completion Report

Spud Date: September 19, 2017

OTC Prod. Unit No.: 073-222593

Drilling Finished Date: October 01, 2017

1st Prod Date: November 10, 2017

Completion Date: October 30, 2017

Drill Type: HORIZONTAL HOLE

Min Gas Allowable: Yes

Well Name: BOLLENBACH 36-17-6 1H

Purchaser/Measurer: CHESAPEAKE OPERATING LLC

Location: KINGFISHER 36 17N 6W
NW NW NE NW
240 FNL 1615 FWL of 1/4 SEC
Derrick Elevation: 1073 Ground Elevation: 1046

First Sales Date: 11/17/2017

Operator: CHESAPEAKE OPERATING LLC 17441
PO BOX 18496
6100 N WESTERN AVE
OKLAHOMA CITY, OK 73154-0496

Completion Type		Location Exception		Increased Density	
X	Single Zone	Order No		Order No	
	Multiple Zone	671740		N/A	
	Commingled				

Casing and Cement							
Type	Size	Weight	Grade	Feet	PSI	SAX	Top of CMT
SURFACE	9 5/8	36	J-55	1500		595	SURFACE
PRODUCTION	7	26	P-110EC	6941		330	3566

Liner								
Type	Size	Weight	Grade	Length	PSI	SAX	Top Depth	Bottom Depth
LINER	4 1/2	13.50	P-110EC	10233	0	950	6660	16893

Total Depth: 16893

Packer		Plug	
Depth	Brand & Type	Depth	Plug Type
There are no Packer records to display.		16734	PERMANENT BP

Initial Test Data										
Test Date	Formation	Oil BBL/Day	Oil-Gravity (API)	Gas MCF/Day	Gas-Oil Ratio Cu FT/BBL	Water BBL/Day	Pumpin or Flowing	Initial Shut-In Pressure	Choke Size	Flow Tubing Pressure
Nov 22, 2017	OSWEGO	334	41	357	1069	2256	PUMPING			8

Completion and Test Data by Producing Formation			
Formation Name: OSWEGO		Code: 404OSWG	Class: OIL
Spacing Orders		Perforated Intervals	
Order No	Unit Size	From	To
664317	640	6800	16731
Acid Volumes		Fracture Treatments	
622,000 GALLONS ACID		103,588 BARRELS FLUIDS	

Formation	Top
OSWEGO	6726

Were open hole logs run? No
Date last log run:

Were unusual drilling circumstances encountered? No
Explanation:

Other Remarks
OCC - EXCEPTION TO THE RULE ORDER NUMBER 672030

Lateral Holes
Sec: 24 TWP: 17N RGE: 6W County: KINGFISHER NW NE NW NW 172 FNL 923 FWL of 1/4 SEC Depth of Deviation: 5600 Radius of Turn: 837 Direction: 358 Total Length: 10167 Measured Total Depth: 16893 True Vertical Depth: 6437 End Pt. Location From Release, Unit or Property Line: 172

FOR COMMISSION USE ONLY	
Status: Accepted	1138560

PLEASE TYPE OR USE BLACK INK ONLY
FORMATION RECORD

Give formation names and tops, if available, or descriptions and thickness of formations drilled through. Show intervals cored or drillstem tested.

LEASE NAME Bollenbach 36-17-6

WELL NO. 1H

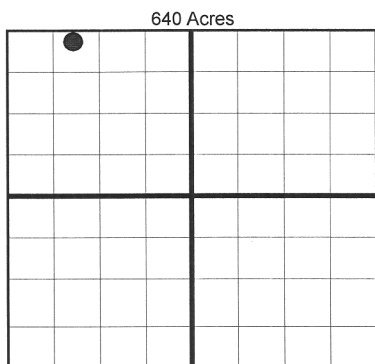
NAMES OF FORMATIONS	TOP
Oswego	6,726

FOR COMMISSION USE ONLY	
ITD on file <input type="checkbox"/> YES <input type="checkbox"/> NO	
APPROVED _____	DISAPPROVED _____
2) Reject Codes	

Were open hole logs run? _____ yes <u>X</u> no
Date Last log was run <u>N/A</u>
Was CO ₂ encountered? _____ yes <u>X</u> no at what depths?
Was H ₂ S encountered? _____ yes <u>X</u> no at what depths?
Were unusual drilling circumstances encountered? _____ yes <u>X</u> no
If yes, briefly explain.

Other remarks:

OCC - Exception to the rule order 672030

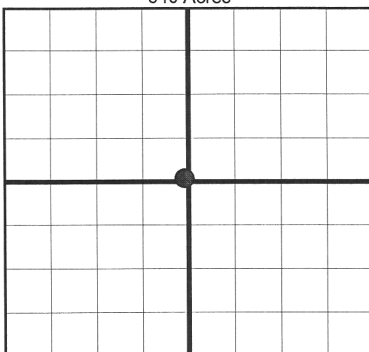


If more than three drainholes are proposed, attach a separate sheet indicating the necessary information.

Direction must be stated in degrees azimuth. Please note, the horizontal drainhole and its end point must be located within the boundaries of the lease or spacing unit.

Directional surveys are required for all drainholes and directional wells.

640 Acres



BOTTOM HOLE LOCATION FOR DIRECTIONAL HOLE

SEC	TWP	RGE	COUNTY	
Spot Location	1/4 1/4 1/4 1/4		Feet From 1/4 Sec Lines FSL	FWL
Measured Total Depth	True Vertical Depth		BHL From Lease, Unit, or Property Line:	

BOTTOM HOLE LOCATION FOR HORIZONTAL HOLE: (LATERALS)

SEC	TWP	RGE	COUNTY						
24	17N	6W	Kingfisher						
Spot Location	NW 1/4	NE 1/4	NW 1/4	NW 1/4	Feet From 1/4 Sec Lines	FNL	172	FWL	923
Depth of Deviation	5,600		Radius of Turn	837	Direction	358	Total Length	10,167	
Measured Total Depth	16,893		True Vertical Depth	6,437	BHL From Lease, Unit, or Property Line: 172				

LATERAL #2

SEC	TWP	RGE	COUNTY		
Spot Location	1/4 1/4 1/4 1/4		Feet From 1/4 Sec Lines	FSL	FWL
Depth of Deviation	Radius of Turn		Direction	Total Length	
Measured Total Depth	True Vertical Depth		BHL From Lease, Unit, or Property Line:		

LATERAL #3

SEC	TWP	RGE	COUNTY		
Spot Location	1/4 1/4 1/4 1/4		Feet From 1/4 Sec Lines	FSL	FWL
Depth of Deviation	Radius of Turn		Direction	Total Length	
Measured Total Depth	True Vertical Depth		BHL From Lease, Unit, or Property Line:		