

Oklahoma Corporation Commission  
Oil & Gas Conservation Division  
Post Office Box 52000  
Oklahoma City, Oklahoma 73152-2000  
Rule 165: 10-3-25

Form 1002A

API No.: 35049251070000

**Completion Report**

Spud Date: May 15, 2017

OTC Prod. Unit No.:

Drilling Finished Date: June 07, 2017

1st Prod Date:

Completion Date: June 21, 2017

**Drill Type: STRAIGHT HOLE**

**SERVICE WELL**

Well Name: DERDEYN 19

Purchaser/Measurer:

Location: GARVIN 17 1N 3W  
S2 NW NE NE  
2160 FSL 1650 FWL of 1/4 SEC  
Latitude: 34.56372 Longitude: -97.53138  
Derrick Elevation: 1029 Ground Elevation: 1025

First Sales Date:

Operator: REDBUD OIL COMPANY 20774

30278 HIGHWAY 76  
ELMORE CITY, OK 73433-8637

Completion Type		Location Exception		Increased Density	
X	Single Zone	Order No		Order No	
	Multiple Zone	There are no Location Exception records to display.		There are no Increased Density records to display.	
	Commingled				

Casing and Cement							
Type	Size	Weight	Grade	Feet	PSI	SAX	Top of CMT
PRODUCTION	7			2240		470	SURFACE

Liner								
Type	Size	Weight	Grade	Length	PSI	SAX	Top Depth	Bottom Depth
There are no Liner records to display.								

**Total Depth: 2750**

Packer		Plug	
Depth	Brand & Type	Depth	Plug Type
2223	TENSION	There are no Plug records to display.	

Initial Test Data										
Test Date	Formation	Oil BBL/Day	Oil-Gravity (API)	Gas MCF/Day	Gas-Oil Ratio Cu FT/BBL	Water BBL/Day	Pumpin or Flowing	Initial Shut-In Pressure	Choke Size	Flow Tubing Pressure
There are no Initial Data records to display.										

**Completion and Test Data by Producing Formation**

Formation Name: ARBUCKLE OVERTHRUST

Code: 169ABCOT

Class: DISP

Formation	Top
OVERTHRUST ARBUCKLE	2214

Were open hole logs run? Yes

Date last log run: June 07, 2017

Were unusual drilling circumstances encountered? No

Explanation:

**Other Remarks**

OCC - REPUSH THE ONLY OPEN HOLE LOG RUN WAS A GAMMA RAY LOG IT IS IMAGED BEHIND THE 1002A. TWO STAGE CEMENTING TOOL SET AT 1,136 FEET AS REQUIRED BY OCC. OCC - THIS WELL IS AN OPEN HOLE COMPLETION FROM BOTTOM OF THE 7" CASING AT 2,240' TO TOTAL DEPTH AT 2,750'. ORDER NUMBER 668108

**FOR COMMISSION USE ONLY**

1137655

Status: Accepted

SEE Log Attached

PLEASE TYPE OR USE BLACK INK ONLY

## FORMATION RECORD

Give formation names and tops, if available, or descriptions and thickness of formations drilled through. Show intervals cored or drillstem tested.

LEASE NAME

Derdeyn

WELL NO. 19

NAMES OF FORMATIONS	TOP
Overthrust Arbuckle	2,214

## FOR COMMISSION USE ONLY

ITD on file ☐ YES ☐ NO

APPROVED DISAPPROVED

2) Reject Codes

Were open hole logs run? ☒ yes ☐ no

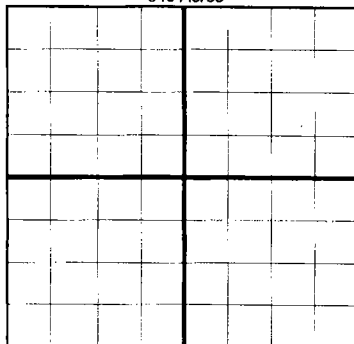
Date Last log was run 6/7/2017

Was CO<sub>2</sub> encountered? ☐ yes ☒ no at what depths?Was H<sub>2</sub>S encountered? ☐ yes ☒ no at what depths?Were unusual drilling circumstances encountered? ☐ yes ☒ no  
If yes, briefly explain below

Other remarks: Two stage cementing tool set at 1,136 feet as required by OCC.

OCC - This well is an open hole completion from bottom of the 7" casing at 2240' to total depth at 2750' ORDER 668108

640 Acres

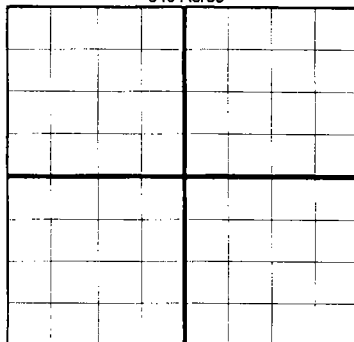


If more than three drainholes are proposed, attach a separate sheet indicating the necessary information.

Direction must be stated in degrees azimuth.  
Please note, the horizontal drainhole and its end point must be located within the boundaries of the lease or spacing unit.

Directional surveys are required for all drainholes and directional wells.

640 Acres



## BOTTOM HOLE LOCATION FOR DIRECTIONAL HOLE

SEC	TWP	RGE	COUNTY
Spot Location	1/4	1/4	1/4
Measured Total Depth	True Vertical Depth	Feet From 1/4 Sec Lines	FSL
		BHL From Lease, Unit, or Property Line:	FWL

## BOTTOM HOLE LOCATION FOR HORIZONTAL HOLE: (LATERALS)

## LATERAL #1

SEC	TWP	RGE	COUNTY
Spot Location	1/4	1/4	1/4
Depth of Deviation	Radius of Turn	Direction	Total Length
Measured Total Depth	True Vertical Depth	BHL From Lease, Unit, or Property Line:	FWL

## LATERAL #2

SEC	TWP	RGE	COUNTY
Spot Location	1/4	1/4	1/4
Depth of Deviation	Radius of Turn	Direction	Total Length
Measured Total Depth	True Vertical Depth	BHL From Lease, Unit, or Property Line:	FWL

## LATERAL #3

SEC	TWP	RGE	COUNTY
Spot Location	1/4	1/4	1/4
Depth of Deviation	Radius of Turn	Direction	Total Length
Measured Total Depth	True Vertical Depth	BHL From Lease, Unit, or Property Line:	FWL

# Arbuckle Wireline

GAMMA RAY  
CCL

Logging    Perforating    Pipe Recovery

Company REDBUD OIL  
Well DERDEYN #19  
Field ROBBERSON  
County GARVIN  
State OK    Country USA

Company REDBUD OIL  
Well DERDEYN #19  
Field ROBBERSON  
County GARVIN  
State OK    Country USA

Location:    API #: 049-25107

SEC 17 TWP 1N RGE 3W  
S/2 NW, NE, NE

Permanent Datum  
Log Measured From  
Drilling Measured From

Elevation  
K.B.  
D.F.  
G.L.

Date 6-7-17

Run Number ONE

Depth Driller 2750

Depth Logger 2750

Bottom Logged Interval

Top Log Interval

Open Hole Size

Type Fluid

Density / Viscosity

Max. Recorded Temp.

Estimated Cement Top

Time Well Ready

Time Logger on Bottom

Equipment Number

Location 1005

Recorded By LONE GROVE

Witnessed By M.FURMAN

Run Number

Bit From To

Size

Weight

Top

Bottom

<<< Fold Here >>>

All interpretations are opinions based on inferences from electrical or other measurements and we cannot and do not guarantee the accuracy or correctness of any interpretation, and we shall not, except in the case of gross or willful negligence on our part, be liable or responsible for any loss, costs, damages, or expenses incurred or sustained by anyone resulting from any interpretation made by any of our officers, agents or employees. These interpretations are also subject to our general terms and conditions set out in our current Price Schedule.

Comments

0

GR

150

10

CCL -10

2150

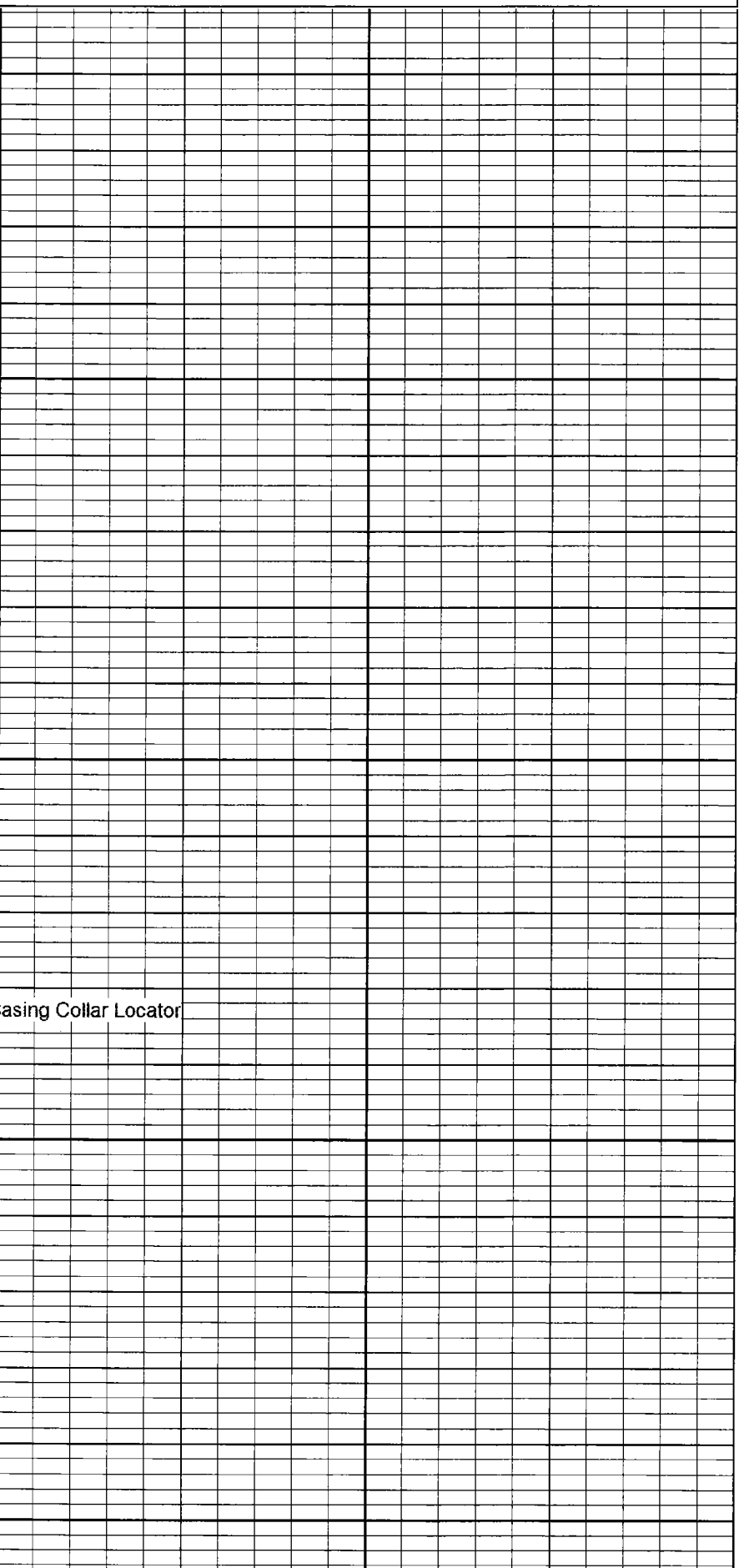
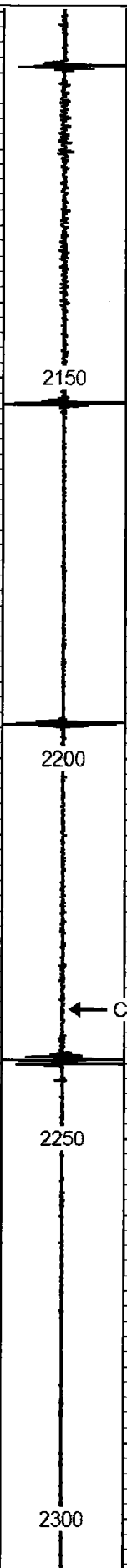
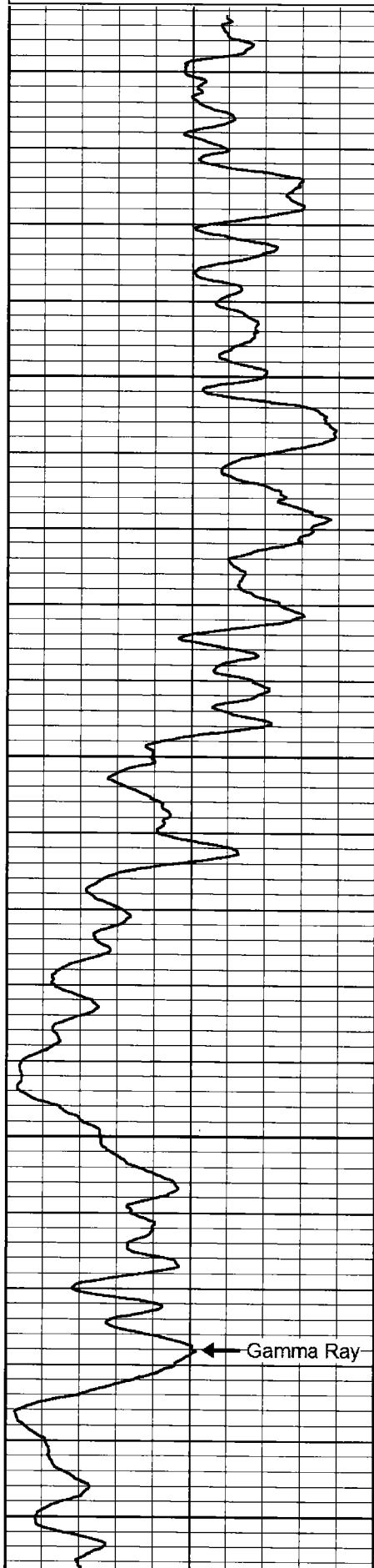
2200

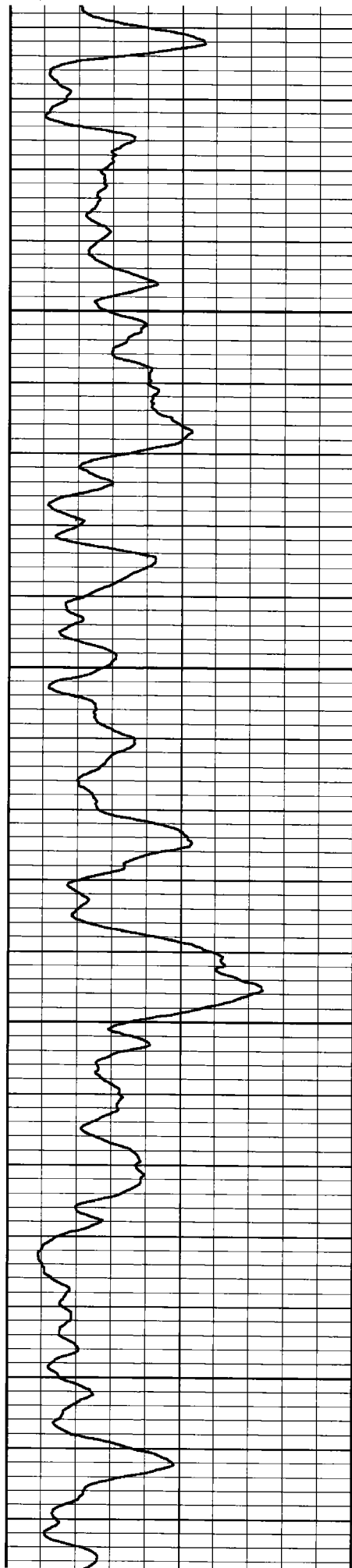
2250

2300

← Casing Collar Locator

← Gamma Ray



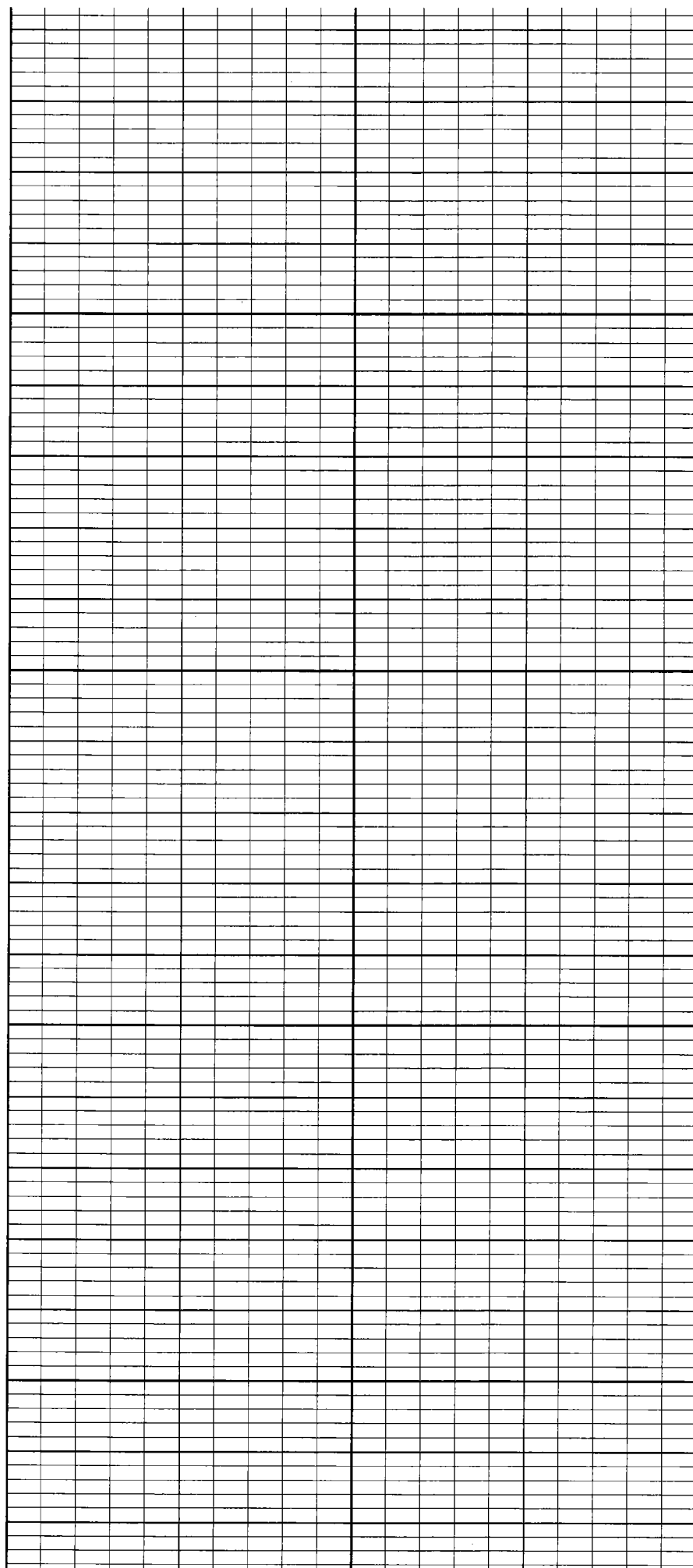


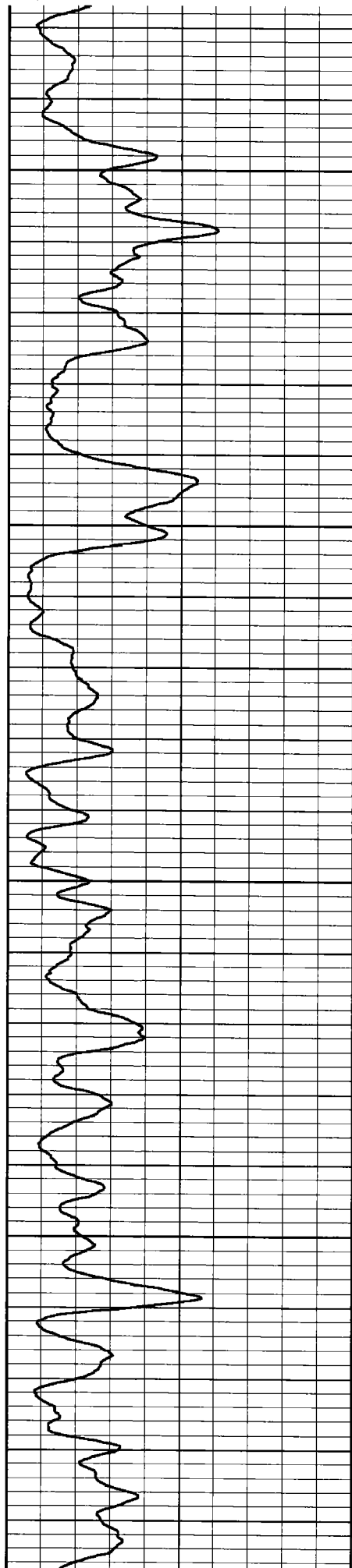
2350

2400

2450

2500





2550

2600

2650

2700

