

Oklahoma Corporation Commission  
Oil & Gas Conservation Division  
Post Office Box 52000  
Oklahoma City, Oklahoma 73152-2000  
Rule 165: 10-3-25

Form 1002A

API No.: 35043235340000

**Completion Report**

Spud Date: July 17, 2017

OTC Prod. Unit No.: 043-222510

Drilling Finished Date: September 05, 2017

1st Prod Date: November 12, 2017

Completion Date: November 10, 2017

**Drill Type:** HORIZONTAL HOLE

Min Gas Allowable: Yes

Well Name: DERALD 36/25-19-16 1H

Purchaser/Measurer: ENABLE

Location: DEWEY 1 18N 16W  
N2 N2 NE NE  
200 FNL 660 FEL of 1/4 SEC  
Latitude: 36.07157955 Longitude: -98.85156755  
Derrick Elevation: 1920 Ground Elevation: 1890

First Sales Date: 11/12/2017

Operator: TAPSTONE ENERGY LLC 23467

100 E MAIN ST  
OKLAHOMA CITY, OK 73104-2509

Completion Type		Location Exception		Increased Density	
X	Single Zone	Order No		Order No	
	Multiple Zone	670668		There are no Increased Density records to display.	
	Commingled				

Casing and Cement							
Type	Size	Weight	Grade	Feet	PSI	SAX	Top of CMT
SURFACE	13 3/8	48	H-40	450	940	645	SURFACE
INTERMEDIATE	9 5/8	40	N/L	6876	2200	1185	378
PRODUCTION	5 1/2	20	P-110	20625	3050	2645	6353

Liner								
Type	Size	Weight	Grade	Length	PSI	SAX	Top Depth	Bottom Depth
There are no Liner records to display.								

**Total Depth: 20625**

Packer		Plug	
Depth	Brand & Type	Depth	Plug Type
10452	AS1-X	There are no Plug records to display.	

Initial Test Data
-------------------

Test Date	Formation	Oil BBL/Day	Oil-Gravity (API)	Gas MCF/Day	Gas-Oil Ratio Cu FT/BBL	Water BBL/Day	Pumpin or Flowing	Initial Shut-In Pressure	Choke Size	Flow Tubing Pressure
Dec 26, 2017	MISSISSIPPIAN	343	44	2609	7606	1262	FLOWING		34	1081

Completion and Test Data by Producing Formation

Formation Name: MISSISSIPPIAN

Code: 359MSSP

Class: OIL

Spacing Orders

Order No	Unit Size
665489	640
665879	640
670770	MULTIUNIT

Perforated Intervals

From	To
10520	20625

Acid Volumes

113,022 GALLONS 15% HCL

Fracture Treatments

444,134 BARRELS, 19,569,717 POUNDS PROPPANT

Formation	Top
BASE HEEBNER	6500
DOUGLAS	6800
TONKAWA	6970
COTTAGE GROVE	7440
HOGSHOOTER	7765
OSWEGO	8200
ATOKA	8755
CHESTER	9250
BASAL MANNING	10360
MERAMEC	10420

Were open hole logs run? No

Date last log run:

Were unusual drilling circumstances encountered? No

Explanation:

Other Remarks

There are no Other Remarks.

Lateral Holes

Sec: 25 TWP: 19N RGE: 16W County: DEWEY

NE NW NE NE

170 FNL 670 FEL of 1/4 SEC

Depth of Deviation: 9853 Radius of Turn: 1011 Direction: 360 Total Length: 9761

Measured Total Depth: 20625 True Vertical Depth: 10243 End Pt. Location From Release, Unit or Property Line: 170





Give formation names and tops, if available, or descriptions and thickness of formations drilled through. Show intervals cored or drillstem tested.

FOR COMMISSION USE ONLY	
ITD on file	<input type="checkbox"/> YES <input type="checkbox"/> NO
APPROVED	DISAPPROVED
2) Reject Codes	

Were open hole logs run?                 \_\_\_ yes   X no  
Date Last log was run \_\_\_\_\_  
was CO<sub>2</sub> encountered? \_\_\_ yes   X no   at what depths? \_\_\_\_\_  
was H<sub>2</sub>S encountered? \_\_\_ yes   X no   at what depths? \_\_\_\_\_  
Were unusual drilling circumstances encountered?                                 \_\_\_ yes   X no  
If yes, briefly explain below

Other remarks:	

Direction must be stated in degrees azimuth.  
Please note, the horizontal drainhole and its end point must be located within the boundaries of the lease or spacing unit.

A blank 10x10 grid with a bold cross dividing it into four 5x5 quadrants.

SEC	TWP	RGE	COUNTY
Spot Location			
1/4	1/4	1/4	1/4
Measured Total Depth		True Vertical Depth	Feet From 1/4 Sec Lines
			FNL
		FEL	
BHL From Lease, Unit, or Property Line:			

LATERAL #1									
SEC	25	TWP	19N	RGE	16W	COUNTY DEWEY			
Spot Location						Feet From 1/4 Sec Lines		FNL 170'	FEL 670'
NE 1/4		NW 1/4		NE 1/4		NE 1/4			
Depth of Deviation			9,853'		Radius of Turn		1,011		Direction 360.037
Measured Total Depth			20,625'		True Vertical Depth		10,243'		Total Length 9,761'
							BHL From Lease, Unit, or Property Line:		170'

SEC	TWP	RGE	COUNTY			
Spot Location				Feet From 1/4 Sec Lines	FSL	FWL
1/4	1/4	1/4	1/4			
Depth of Deviation		Radius of Turn	Direction	Total Length		
Measured Total Depth		True Vertical Depth	BHL From Lease, Unit, or Property Line:			

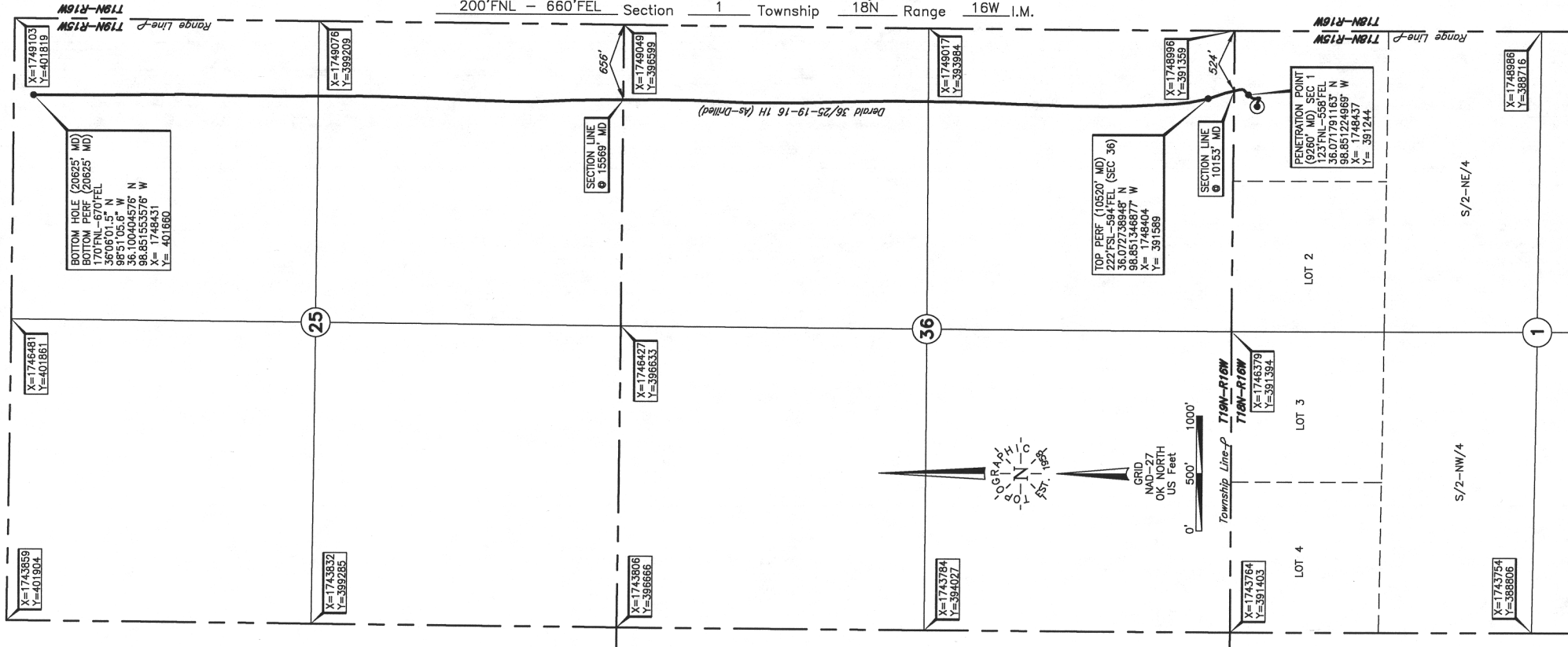
SEC	TWP	RGE	COUNTY			
Spot Location				Feet From 1/4 Sec Lines	FSL	FWL
1/4	1/4	1/4	1/4			
Depth of Deviation		Radius of Turn	Direction	Total Length		
Measured Total Depth		True Vertical Depth	BHL From Lease, Unit, or Property Line:			

# TOPOGRAPHIC LAND SURVEYORS OF OKLAHOMA

6709 NORTH CLASSEN BLVD., OKLA. CITY, OKLA. 73116 \* LOCAL (405) 843-4847 \* OUT OF STATE (800) 654-3219

DEWEY Certificate of Authorization No. 1293 LS

County, Oklahoma  
200' FNL - 660' FEL Section 1 Township 18N Range 16W I.M.



## ELEVATION:

1890' Gr. at Stake

Operator: TAPSTONE ENERGY

Lease Name: DERALD 36/25-19-16

Well No.: 1H

Topography & Vegetation Loc. fell in sloped heavy brush

Good Drill Site? Yes

Best Accessibility to Location From North off lease road

Distance & Direction  
from Hwy Jct or Town From Jct. US Hwys. 60-183 - St. Hwy. 51 West and US Hwy. 60-St.

Hwy. 3 South, go ±4.7 mi. SF on US Hwy. 60-St. Hwy. 3 to county road, then ±1.8 mi.

South on county road to the NW Cor. of Sec. 1-T18N-R16W, then ±0.5 mi. East on

access road to the N/4 Cor. of Sec. 1-T18N-R16W

Reference Stakes or Alternate  
Location Stakes Set  
None

DATUM: NAD-27

LAT: 36°04'17.7"N

LONG: 98°51'05.6"W

LAT: 36.071579548° N

LONG: 98.851567549° W

STATE PLANE

COORDINATES: (US Feet)

ZONE: OK NORTH

X: 1748335

Y: 391168

(This information was  
gathered with a GPS receiver  
with ±1 foot Horiz./Vert. accuracy)

284037 Date of Drawing: Nov. 13, 2017

Invoice # 275867 Date Staked: May 15, 2017 AC

## FINAL AS-DRILLED PLAT

AS-DRILLED INFORMATION  
FURNISHED BY TAPSTONE ENERGY