

Oklahoma Corporation Commission  
Oil & Gas Conservation Division  
Post Office Box 52000  
Oklahoma City, Oklahoma 73152-2000  
Rule 165: 10-3-25

Form 1002A

API No.: 35047250500001

**Completion Report**

Spud Date: August 18, 2015

OTC Prod. Unit No.:

Drilling Finished Date: August 31, 2015

**Amended**

1st Prod Date:

Amend Reason: SHOW COMPLETION

Completion Date: January 29, 2016

Recomplete Date: September 05, 2017

**Drill Type: STRAIGHT HOLE**

Well Name: SIMMERING 50

Purchaser/Measurer:

Location: GARFIELD 13 22N 4W  
NE SW SW NW  
550 FSL 550 FWL of 1/4 SEC  
Derrick Elevation: 0 Ground Elevation: 1119

First Sales Date:

Operator: M M ENERGY INC 19118

13927 QUAIL POINTE DR  
OKLAHOMA CITY, OK 73134-1035

Completion Type		Location Exception		Increased Density	
X	Single Zone	Order No		Order No	
	Multiple Zone	644444		There are no Increased Density records to display.	
	Commingled				

Casing and Cement							
Type	Size	Weight	Grade	Feet	PSI	SAX	Top of CMT
SURFACE	8 5/8		J	274		225	SURFACE
PRODUCTION	5 1/2	15	J	4785		190	3389

Liner								
Type	Size	Weight	Grade	Length	PSI	SAX	Top Depth	Bottom Depth
There are no Liner records to display.								

**Total Depth: 4785**

Packer	
Depth	Brand & Type
There are no Packer records to display.	

Plug	
Depth	Plug Type
There are no Plug records to display.	

Initial Test Data										
Test Date	Formation	Oil BBL/Day	Oil-Gravity (API)	Gas MCF/Day	Gas-Oil Ratio Cu FT/BBL	Water BBL/Day	Pumpin or Flowing	Initial Shut-In Pressure	Choke Size	Flow Tubing Pressure
Sep 06, 2017	OSWEGO	25	40			5	PUMPING			

**Completion and Test Data by Producing Formation**

Formation Name: OSWEGO

Code: 404OSWG

Class: OIL

**Spacing Orders**

Order No	Unit Size
577747	160

**Perforated Intervals**

From	To
4404	4564

**Acid Volumes**

3,000 GALLONS
---------------

**Fracture Treatments**

NONE
------

Formation	Top
TONKAWA	3280

Were open hole logs run? Yes

Date last log run: August 30, 2015

Were unusual drilling circumstances encountered? No

Explanation:

**Other Remarks**

TAKEN OUT OF TEMPORARY ABANDONMENT, COMPLETED IN OSWEGO. OCC - OPERATOR SET TWO PORT COLLARS IN 5 1/2" CASING. THE FIRST PORT COLLAR IS LOCATED AT 3,410' USING 100 SACKS OF CEMENT, LIFTED CEMENT TO 2,660'. THE SECOND PORT COLLAR IS SET AT 2,586' USING 200 SACKS OF CEMENT, CEMENT WAS LIFTED TO 636'.

**FOR COMMISSION USE ONLY**

1138838

Status: Accepted

API NO. 047-25050  
OTC PROD.  
UNIT NO.

PLEASE TYPE OR USE BLACK INK ONLY  
NOTE:

Attach copy of original 1002A  
if recompletion or reentry.

OKLAHOMA CORPORATION COMMISSION  
Oil & Gas Conservation Division  
Post Office Box 52000  
Oklahoma City, Oklahoma 73152-2000  
Rule 165:10-3-25

RECEIVED

FEB 08 2018

OKLAHOMA CORPORATION  
COMMISSION

Form 1002A  
Rev. 2009

☐ ORIGINAL  
☒ AMENDED (Reason)

Taken out Temporary Abandonment

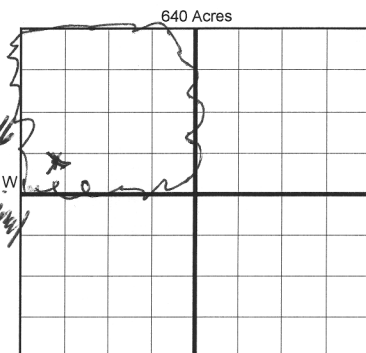
TYPE OF DRILLING OPERATION

☒ STRAIGHT HOLE ☐ DIRECTIONAL HOLE ☐ HORIZONTAL HOLE  
☐ SERVICE WELL

If directional or horizontal, see reverse for bottom hole location.

COUNTY	Garfield	SEC	13	TWP	22n	RGE	4w
LEASE NAME	Simmering			WELL NO.	50		
NE 1/4 SW 1/4 SW 1/4 NW 1/4	FSL OF 1/4 SEC 550			FWL OF 1/4 SEC	550		
ELEVATION N Derrick	Ground 1119			Latitude (if known)			
OPERATOR NAME	MM Energy			OTC/OCC OPERATOR NO.	19118		
ADDRESS	P O Box 21904						
CITY	Oklahoma City			STATE	Ok	ZIP	73156

SPUD DATE 8-18-15  
DRLG FINISHED DATE 8-31-15  
DATE OF WELL COMPLETION Temp abandon 1-21-16  
1st PROD DATE  
RECOMP DATE 9-5-2017  
Longitude (if known)  
Per company



COMPLETION TYPE

<input checked="" type="checkbox"/> SINGLE ZONE
<input type="checkbox"/> MULTIPLE ZONE
Application Date
COMMINGLED
Application Date
LOCATION
EXCEPTION ORDER
INCREASED DENSITY
ORDER NO.

CASING & CEMENT (Form 1002C must be attached)

TYPE	SIZE	WEIGHT	GRADE	FEET	PSI	SAX	TOP OF CMT
CONDUCTOR							
SURFACE	8 5/8		J	274		225	surface
INTERMEDIATE	port	collar		2,586		200	636
PRODUCTION	5 1/2	15	J	4785		190	3389
LINER	port	collar		3410		100	2,660
TOTAL DEPTH							4,785

PACKER @ \_\_\_\_\_ BRAND & TYPE \_\_\_\_\_ PLUG @ \_\_\_\_\_ TYPE \_\_\_\_\_ PLUG @ \_\_\_\_\_ TYPE \_\_\_\_\_  
PACKER @ \_\_\_\_\_ BRAND & TYPE \_\_\_\_\_ PLUG @ \_\_\_\_\_ TYPE \_\_\_\_\_ PLUG @ \_\_\_\_\_ TYPE \_\_\_\_\_

COMPLETION & TEST DATA BY PRODUCING FORMATION

FORMATION	Oswego						No Frac
SPACING & SPACING ORDER NUMBER	168 577747						
CLASS: Oil, Gas, Dry, Inj, Disp, Comm Disp, Svc	oil						
PERFORATED INTERVALS	4554-4564						
	4404-4412						
ACID/VOLUME	3000 gallon						
FRACTURE TREATMENT (Fluids/Prop Amounts)	none						

Min Gas Allowable (165:10-17-7)

Gas Purchaser/Measurer

☐

OR

First Sales Date

INITIAL TEST DATA

Oil Allowable (165:10-13-3)

INITIAL TEST DATE	9/6/2017					
OIL-BBL/DAY	25					
OIL-GRAVITY ( API)	40					
GAS-MCF/DAY						
GAS-OIL RATIO CU FT/BBL						
WATER-BBL/DAY	5					
PUMPING OR FLOWING	pumping					
INITIAL SHUT-IN PRESSURE						
CHOKE SIZE						
FLOW TUBING PRESSURE						

AS SUBMITTED

A record of the formations drilled through, and pertinent remarks are presented on the reverse. I declare that I have knowledge of the contents of this report and am authorized by my organization to make this report, which was prepared by me or under my supervision and direction, with the data and facts stated herein to be true, correct, and complete to the best of my knowledge and belief.

Mike Murphy

2/2/2018

(405) 463-3355

SIGNATURE

NAME (PRINT OR TYPE)

DATE

PHONE NUMBER

P O Box 21904

Oklahoma city

Ok

73156

mike@mmenergy.net

ADDRESS

CITY

STATE

ZIP

EMAIL ADDRESS

Give formation names and tops, if available, or descriptions and thickness of formations drilled through. Show intervals cored or drillstem tested.

FOR COMMISSION USE ONLY	
ITD on file	<input type="checkbox"/> YES <input type="checkbox"/> NO
APPROVED	DISAPPROVED
	2) Reject Codes <hr/> <hr/> <hr/> <hr/> <hr/>

Other remarks: Taken out of Temporary Abandonment Completed in OSWEGO

OCC- Operator set two port collars in 5 1/2" casing. The first port collar is located at 3410' using 100 sacks of cement lifted cement to 2660'. The second port collar is set at 2586' using 200 sacks of cement, cement was lifted to 635'.

Direction must be stated in degrees azimuth.  
Please note, the horizontal drainhole and its end point must be located within the boundaries of the lease or spacing unit.

640 Acres

A blank 10x10 grid with a bold cross dividing it into four 5x5 quadrants.

SEC	TWP	RGE	COUNTY
Spot Location			
1/4	1/4	1/4	1/4
Measured Total Depth		True Vertical Depth	Feet From 1/4 Sec Lines
			FSL
		FWL	
BHL From Lease, Unit, or Property Line:			

LATERAL #1						
SEC	TWP	RGE	COUNTY			
Spot Location						
1/4	1/4	1/4	1/4	Feet From 1/4 Sec Lines	FSL	FWL
Depth of Deviation		Radius of Turn		Direction	Total Length	
Measured Total Depth		True Vertical Depth		BHL From Lease, Unit, or Property Line:		

SEC	TWP	RGE	COUNTY			
Spot Location						
1/4	1/4	1/4	1/4	Feet From 1/4 Sec Lines	FSL	FWL
Depth of Deviation		Radius of Turn		Direction	Total Length	
Measured Total Depth		True Vertical Depth		BHL From Lease, Unit, or Property Line:		

SEC	TWP	RGE	COUNTY			
Spot Location						
1/4	1/4	1/4	1/4	Feet From 1/4 Sec Lines	FSL	FWL
Depth of Deviation		Radius of Turn		Direction	Total Length	
Measured Total Depth		True Vertical Depth		BHL From Lease, Unit, or Property Line:		