

Oklahoma Corporation Commission  
Oil & Gas Conservation Division  
Post Office Box 52000  
Oklahoma City, Oklahoma 73152-2000  
Rule 165: 10-3-25

Form 1002A

API No.: 35047250410001

**Completion Report**

Spud Date: July 14, 2015

OTC Prod. Unit No.:

Drilling Finished Date: July 27, 2015

**Amended**

1st Prod Date:

Amend Reason: SHOW COMPLETION

Completion Date: September 15, 2015

Recomplete Date: September 29, 2017

**Drill Type: STRAIGHT HOLE**

Well Name: DIVELY 63

Purchaser/Measurer:

Location: GARFIELD 24 22N 4W  
E2 E2 SW NW  
660 FSL 1100 FWL of 1/4 SEC  
Derrick Elevation: 0 Ground Elevation: 1097

First Sales Date:

Operator: M M ENERGY INC 19118

13927 QUAIL POINTE DR  
OKLAHOMA CITY, OK 73134-1035

Completion Type	
X	Single Zone
	Multiple Zone
	Commingled

Location Exception	
Order No	
There are no Location Exception records to display.	

Increased Density	
Order No	
There are no Increased Density records to display.	

Casing and Cement							
Type	Size	Weight	Grade	Feet	PSI	SAX	Top of CMT
SURFACE	8 5/8		J	355		380	SURFACE
PRODUCTION	5 1/2	15	J	4555		170	3600

Liner								
Type	Size	Weight	Grade	Length	PSI	SAX	Top Depth	Bottom Depth
There are no Liner records to display.								

**Total Depth: 4766**

Packer	
Depth	Brand & Type
There are no Packer records to display.	

Plug	
Depth	Plug Type
3730	CIBP

Initial Test Data
-------------------

Test Date	Formation	Oil BBL/Day	Oil-Gravity (API)	Gas MCF/Day	Gas-Oil Ratio Cu FT/BBL	Water BBL/Day	Pumpin or Flowing	Initial Shut-In Pressure	Choke Size	Flow Tubing Pressure
Sep 30, 2017	LAYTON					50	SWAB			
Oct 04, 2017	TONKAWA	15	40			300	PUMPING			

#### Completion and Test Data by Producing Formation

Formation Name: LAYTON

Code: 405LYTN

Class: DRY

##### Spacing Orders

Order No	Unit Size
NONE	

##### Perforated Intervals

From	To
3817	3820

##### Acid Volumes

250 GALLONS
-------------

##### Fracture Treatments

NONE
------

Formation Name: TONKAWA

Code: 406TNKW

Class: OIL

##### Spacing Orders

Order No	Unit Size
NONE	

##### Perforated Intervals

From	To
3240	3278

##### Acid Volumes

3,000 GALLONS
---------------

##### Fracture Treatments

NONE
------

Formation	Top
TONKAWA	3400
WILCOX	4525

Were open hole logs run? Yes

Date last log run: July 27, 2015

Were unusual drilling circumstances encountered? No

Explanation:

#### Other Remarks

TAKEN OUT OF TEMPORARY ABANDONMENT, COMPLETED IN TONKAWA. OCC - THE OPERATOR SET TWO PORT COLLARS IN 5 1/2" CASING. THE FIRST PORT COLLAR WAS SET AT 3,360' AND USING 100 SACKS OF CEMENT, LIFTED CEMENT TO 2,760'. THE SECOND PORT COLLAR WAS SET AT 2,424' AND USING 225 SACKS OF CEMENT, LIFTED CEMENT TO UNKNOWN LEVEL.

#### FOR COMMISSION USE ONLY

1138836

Status: Accepted

API NO. 047-25041  
OTC PROD.  
UNIT NO.

PLEASE TYPE OR USE BLACK INK ONLY  
NOTE:

Attach copy of original 1002A  
if recompletion or reentry.

OKLAHOMA CORPORATION COMMISSION  
Oil & Gas Conservation Division  
Post Office Box 52000  
Oklahoma City, Oklahoma 73152-2000  
Rule 165:10-3-25

RECEIVED

FEB 08 2015

Form 1002A  
Rev. 2009

☐ ORIGINAL  
☒ AMENDED (Reason)

Taken out Temp Abandonment

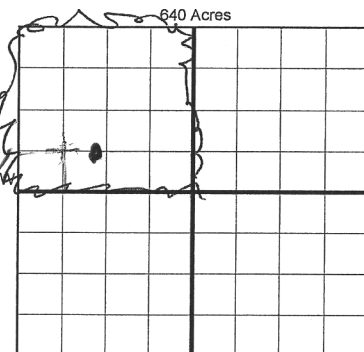
COMPLETION REPORT

TYPE OF DRILLING OPERATION

☒ STRAIGHT HOLE ☐ DIRECTIONAL HOLE ☐ HORIZONTAL HOLE  
☐ SERVICE WELL

If directional or horizontal, see reverse for bottom hole location.

COUNTY	Garfield	SEC	24	TWP	22n	RGE	4w
LEASE NAME	Dively			WELL NO.	63	1st PROD DATE	
ELEVATION	Ground 1097			FSL OF 1/4 SEC	660	FWL OF 1/4 SEC	1100
OPERATOR NAME	MM Energy			DATE OF WELL COMPLETION	9-15-2015	RECOMP DATE	9-29-17
ADDRESS	P O Box 21904			Longitude (if known)		Latitude (if known)	
CITY	Oklahoma City	STATE	Ok	ZIP	73156		



COMPLETION TYPE

<input checked="" type="checkbox"/> SINGLE ZONE
<input type="checkbox"/> MULTIPLE ZONE
<input type="checkbox"/> COMMINGLED
<input type="checkbox"/> LOCATION
<input type="checkbox"/> EXCEPTION ORDER
<input type="checkbox"/> INCREASED DENSITY
<input type="checkbox"/> ORDER NO.

CASING & CEMENT (Form 1002C must be attached)

TYPE	SIZE	WEIGHT	GRADE	FEET	PSI	SAX	TOP OF CMT
CONDUCTOR							
SURFACE	8 5/8		J	355		380	surface
INTERMEDIATE	port collar						
PRODUCTION	5 1/2	15	J	4555		170	3600
LINER	port collar						

PACKER @ \_\_\_\_\_ BRAND & TYPE \_\_\_\_\_ PLUG @ \_\_\_\_\_ TYPE CIBP PLUG @ 3730 TYPE \_\_\_\_\_  
PACKER @ \_\_\_\_\_ BRAND & TYPE \_\_\_\_\_ PLUG @ \_\_\_\_\_ TYPE \_\_\_\_\_ PLUG @ \_\_\_\_\_ TYPE \_\_\_\_\_

TOTAL DEPTH 4,766

COMPLETION & TEST DATA BY PRODUCING FORMATION 405 LVTN 406 TNKW

FORMATION	Layton	Tonkawa					No Frac
SPACING & SPACING ORDER NUMBER	none	none					
CLASS: Oil, Gas, Dry, Inj, Disp, Comm Disp, Svc	dry	oil					
PERFORATED INTERVALS	3817-20	3240-3278					
ACID/VOLUME	250 gallons	3000 gallons					
FRACTURE TREATMENT (Fluids/Prop Amounts)	none	none					

☐ Min Gas Allowable (165:10-17-7)  
OR  
☐ Oil Allowable (165:10-13-3)

Gas Purchaser/Measurer  
First Sales Date

INITIAL TEST DATA

INITIAL TEST DATE	9/30/2017	10/4/2017			
OIL-BBL/DAY	0	15			
OIL-GRAVITY (API)		40			
GAS-MCF/DAY					
GAS-OIL RATIO CU FT/BBL					
WATER-BBL/DAY	50	300			
PUMPING OR FLOWING	swab	pumping			
INITIAL SHUT-IN PRESSURE					
CHOKE SIZE					
FLOW TUBING PRESSURE					

AS SUBMITTED

A record of the formations drilled through, and pertinent remarks are presented on the reverse. I declare that I have knowledge of the contents of this report and am authorized by my organization to make this report, which was prepared by me or under my supervision and direction, with the data and facts stated herein to be true, correct, and complete to the best of my knowledge and belief.

SIGNATURE \_\_\_\_\_ NAME (PRINT OR TYPE) Mike Murphy  
P O Box 21904 Oklahoma city Ok 73156  
ADDRESS CITY STATE ZIP  
DATE 2/5/2018 PHONE NUMBER (405) 463-3355  
EMAIL ADDRESS mike@mmenergy.net

## FORMATION RECORD

LEASE NAME Dively WELL NO. 63

NAMES OF FORMATIONS	TOP
Tonkawa	3,400
Wilcox	4,525

FOR COMMISSION USE ONLY	
ITD on file	<input type="checkbox"/> YES <input type="checkbox"/> NO
APPROVED	DISAPPROVED
	2) Reject Codes  <hr/> <hr/> <hr/> <hr/> <hr/>

Were open hole logs run?	<u>X</u>	yes	<u>      </u>	no
Date Last log was run	<u>7/27/2015</u>			
Was CO <sub>2</sub> encountered?	<u>      </u>	yes	<u>X</u>	no at what depths? <u>                    </u>
Was H <sub>2</sub> S encountered?	<u>      </u>	yes	<u>X</u>	no at what depths? <u>                    </u>
Were unusual drilling circumstances encountered?	<u>      </u>	yes	<u>X</u>	no
If yes, briefly explain below				

OCC - The operator set two port collars in 5 1/2" casing. The first port collar was set at 3360' and using 100 sacks of cement lifted cement to 2760'. The second port collar was set at 2424' and using 225 sacks of cement, lifted cement to unknown level.

640 Acres

A 10x10 grid representing 640 acres. The grid is divided into four 5x5 quadrants by a thick black cross. The text '640 Acres' is centered at the top of the grid.

Directional surveys are required for all  
drainholes and directional wells.  
640 Acres

A blank 10x10 grid for graphing. The grid is composed of 10 columns and 10 rows of squares. A thick horizontal line and a thick vertical line intersect at the center, dividing the grid into four 5x5 quadrants. The top-left and bottom-right quadrants are shaded light gray, while the top-right and bottom-left quadrants are white. The grid is used for plotting the graph of the function  $y = \frac{1}{2}x^2$ .

SEC	TWP	RGE	COUNTY		
Spot Location			Feet From 1/4 Sec Lines	FSL	FWL
1/4	1/4	1/4	1/4		
Measured Total Depth		True Vertical Depth	BHL From Lease, Unit, or Property Line:		

LATERAL #1						
SEC	TWP	RGE	COUNTY			
Spot Location						
1/4		1/4		1/4		
Feet From 1/4 Sec Lines		FSL		FWL		
Depth of Deviation		Radius of Turn		Direction		Total Length
Measured Total Depth		True Vertical Depth		BHL From Lease, Unit, or Property Line:		

SEC	TWP	RGE	COUNTY			
Spot Location						
1/4	1/4	1/4	1/4	Feet From 1/4 Sec Lines	FSL	FWL
Depth of Deviation		Radius of Turn		Direction	Total Length	
Measured Total Depth		True Vertical Depth		BHL From Lease, Unit, or Property Line:		

SEC	TWP	RGE	COUNTY			
Spot Location						
1/4	1/4	1/4	1/4	Feet From 1/4 Sec Lines	FSL	FWL
Depth of Deviation		Radius of Turn		Direction	Total Length	
Measured Total Depth		True Vertical Depth		BHL From Lease, Unit, or Property Line:		