

Oklahoma Corporation Commission
Oil & Gas Conservation Division
Post Office Box 52000
Oklahoma City, Oklahoma 73152-2000
Rule 165: 10-3-25

Form 1002A

API No.: 35047250520001

Completion Report

Spud Date: September 17, 2015

OTC Prod. Unit No.:

Drilling Finished Date: October 09, 2015

Amended

1st Prod Date:

Amend Reason: SHOW COMPLETION

Completion Date: January 29, 2016

Recomplete Date: September 08, 2017

Drill Type: STRAIGHT HOLE

Well Name: SIMMERING 51

Purchaser/Measurer:

Location: GARFIELD 13 22N 4W
N2 S2 NE NW
1880 FSL 1980 FWL of 1/4 SEC
Derrick Elevation: 0 Ground Elevation: 1130

First Sales Date:

Operator: M M ENERGY INC 19118

13927 QUAIL POINTE DR
OKLAHOMA CITY, OK 73134-1035

Completion Type		Location Exception		Increased Density	
X	Single Zone	Order No		Order No	
	Multiple Zone	There are no Location Exception records to display.		There are no Increased Density records to display.	
	Commingled				

Casing and Cement							
Type	Size	Weight	Grade	Feet	PSI	SAX	Top of CMT
SURFACE	8 5/8		J	270		220	SURFACE
PRODUCTION	5 1/2	15	J	4980		215	3680

Liner								
Type	Size	Weight	Grade	Length	PSI	SAX	Top Depth	Bottom Depth
There are no Liner records to display.								

Total Depth: 4785

Packer	
Depth	Brand & Type
There are no Packer records to display.	

Plug	
Depth	Plug Type
There are no Plug records to display.	

Initial Test Data										
Test Date	Formation	Oil BBL/Day	Oil-Gravity (API)	Gas MCF/Day	Gas-Oil Ratio Cu FT/BBL	Water BBL/Day	Pumpin or Flowing	Initial Shut-In Pressure	Choke Size	Flow Tubing Pressure
Sep 12, 2017	BIG LIME	30	40			10	PUMPING			

Completion and Test Data by Producing Formation

Formation Name: BIG LIME

Code: 404BGLM

Class: OIL

Spacing Orders

Order No	Unit Size
577747	160

Perforated Intervals

From	To
4356	4404

Acid Volumes

3,000 GALLONS

Fracture Treatments

NONE

Formation	Top
TONKAWA	3280

Were open hole logs run? Yes

Date last log run: October 08, 2015

Were unusual drilling circumstances encountered? No

Explanation:

Other Remarks

TAKEN OUT OF TEMPORARY ABANDONMENT, PRODUCING IN BIG LIME SEPTEMBER 12, 2017. OCC - THE OPERATOR SET TWO PORT COLLARS IN THE 5 1/2" CASING. THE FIRST PORT COLLAR WAS SET AT 3,524' AND USING 125 SACKS OF CEMENT, LIFTED CEMENT TO 2,660'. THE SECOND PORT COLLAR WAS SET AT 2,610' AND USING 125 SACKS OF CEMENT, LIFTED CEMENT TO 1,246'.

FOR COMMISSION USE ONLY

1138837

Status: Accepted

API NO. 047-25052
OTC PROD.
UNIT NO.

PLEASE TYPE OR USE BLACK INK ONLY
NOTE:

Attach copy of original 1002A
if recompletion or reentry.

OKLAHOMA CORPORATION COMMISSION
Oil & Gas Conservation Division
Post Office Box 52000
Oklahoma City, Oklahoma 73152-2000
Rule 165:10-3-25

Form 1002A
Rev. 2009

☐ ORIGINAL
☒ AMENDED (Reason)

Taken out Temp Abandonment

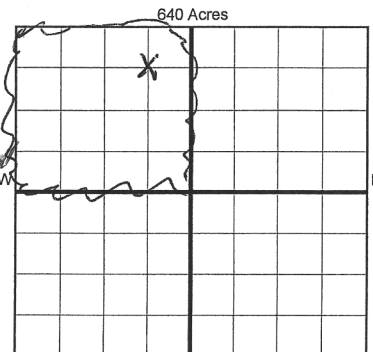
COMPLETION REPORT

TYPE OF DRILLING OPERATION
☒ STRAIGHT HOLE ☐ DIRECTIONAL HOLE ☐ HORIZONTAL HOLE
☐ SERVICE WELL

If directional or horizontal, see reverse for bottom hole location.

COUNTY	Garfield	SEC	13	TWP	22n	RGE	4w
LEASE NAME	Simmering			WELL NO.	51		
n/2 1/4 s/2 1/4 ne 1/4 nw 1/4	FSL OF 1/4 SEC 1880			FWL OF 1/4 SEC 1980			
ELEVATION N Derrick	Ground	1130	Latitude (if known)			Longitude (if known)	
OPERATOR NAME	MM Energy			OTC/OCC OPERATOR NO.	19118		
ADDRESS	P O Box 21904						
CITY	Oklahoma City	STATE	Ok	ZIP	73156		

SPUD DATE 9-17-15
DRLG FINISHED DATE 10-9-15
DATE OF WELL COMPLETION 1-29-2016
1st PROD DATE
RECOMP DATE 9-8-2017



COMPLETION TYPE

<input checked="" type="checkbox"/> SINGLE ZONE
<input type="checkbox"/> MULTIPLE ZONE
Application Date
<input type="checkbox"/> COMMINGLED
Application Date
LOCATION
EXCEPTION ORDER
INCREASED DENSITY
ORDER NO.

CASING & CEMENT (Form 1002C must be attached)

TYPE	SIZE	WEIGHT	GRADE	FEET	PSI	SAX	TOP OF CMT
CONDUCTOR							
SURFACE	8 5/8		J	270		220	surface
INTERMEDIATE	port collar			2,640		125	1,246
PRODUCTION	5 1/2	15	J	4980		215	3680
LINER	port collar			3524		125	2,000
							4,785

PACKER @ _____ BRAND & TYPE _____ PLUG @ _____ TYPE _____ PLUG @ _____ TYPE _____
PACKER @ _____ BRAND & TYPE _____ PLUG @ _____ TYPE _____ PLUG @ _____ TYPE _____

TOTAL DEPTH

COMPLETION & TEST DATA BY PRODUCING FORMATION

FORMATION	Big Lime						No Frac
SPACING & SPACING ORDER NUMBER	(160) 577747						
CLASS: Oil, Gas, Dry, Inj, Disp, Comm Disp, Svc	oil						
	4356-4366						
PERFORATED INTERVALS	4394-4404						
ACID/VOLUME	3000 gallons						
FRACTURE TREATMENT (Fluids/Prop Amounts)	none						

Min Gas Allowable (165:10-17-7)

Gas Purchaser/Measurer

OR

First Sales Date

INITIAL TEST DATA

Oil Allowable (165:10-13-3)

INITIAL TEST DATE	9/12/2017					
OIL-BBL/DAY	30					
OIL-GRAVITY (API)	40					
GAS-MCF/DAY	0					
GAS-OIL RATIO CU FT/BBL						
WATER-BBL/DAY	10					
PUMPING OR FLOWING	pumping					
INITIAL SHUT-IN PRESSURE						
CHOKE SIZE						
FLOW TUBING PRESSURE						

AS SUBMITTED

A record of the formations drilled through, and pertinent remarks are presented on the reverse. I declare that I have knowledge of the contents of this report and am authorized by my organization to make this report, which was prepared by me or under my supervision and direction, with the data and facts stated herein to be true, correct, and complete to the best of my knowledge and belief.

SIGNATURE

Mike Murphy

2/2/2018

(405) 463-3355

P O Box 21904

Oklahoma city

Ok

73156

mike@mmenergy.net

ADDRESS

CITY

STATE

ZIP

EMAIL ADDRESS

PLEASE TYPE OR USE BLACK INK ONLY

FORMATION RECORD

Give formation names and tops, if available, or descriptions and thickness of formations drilled through. Show intervals cored or drillstem tested.

LEASE NAME

simmering

WELL NO.

51

NAMES OF FORMATIONS	TOP
Tonkawa	3,280

FOR COMMISSION USE ONLY	
ITD on file	<input type="checkbox"/> YES <input type="checkbox"/> NO
APPROVED	DISAPPROVED
2) Reject Codes	

Were open hole logs run?	<input checked="" type="checkbox"/> yes <input type="checkbox"/> no
Date Last log was run	10/8/2015
Was CO ₂ encountered?	<input type="checkbox"/> yes <input checked="" type="checkbox"/> no at what depths? <input type="text"/>
Was H ₂ S encountered?	<input type="checkbox"/> yes <input checked="" type="checkbox"/> no at what depths? <input type="text"/>
Were unusual drilling circumstances encountered?	<input type="checkbox"/> yes <input checked="" type="checkbox"/> no
If yes, briefly explain below	

Other remarks: Taken out of Temporary Abandonment producing in Big LIME 9-12-17

OCC - the operator set two port collars in the 5 1/2" casing. The first port collar was set at 3524' and using 125 sacks of cement lifted cement to 2660'. The second port collar was set at 2610' and using 125 sacks of cement, lifted cement to 1246'

640 Acres

If more than three drainholes are proposed, attach a separate sheet indicating the necessary information.

Direction must be stated in degrees azimuth.
Please note, the horizontal drainhole and its end point must be located within the boundaries of the lease or spacing unit.

Directional surveys are required for all drainholes and directional wells.

640 Acres

BOTTOM HOLE LOCATION FOR DIRECTIONAL HOLE

SEC	TWP	RGE	COUNTY
Spot Location			
1/4	1/4	1/4	1/4
Measured Total Depth		True Vertical Depth	BHL From Lease, Unit, or Property Line:

BOTTOM HOLE LOCATION FOR HORIZONTAL HOLE: (LATERALS)

LATERAL #1

SEC	TWP	RGE	COUNTY
Spot Location			
1/4	1/4	1/4	1/4
Depth of Deviation		Radius of Turn	Direction
			Total Length
Measured Total Depth		True Vertical Depth	BHL From Lease, Unit, or Property Line:

LATERAL #2

SEC	TWP	RGE	COUNTY
Spot Location			
1/4	1/4	1/4	1/4
Depth of Deviation		Radius of Turn	Direction
			Total Length
Measured Total Depth		True Vertical Depth	BHL From Lease, Unit, or Property Line:

LATERAL #3

SEC	TWP	RGE	COUNTY
Spot Location			
1/4	1/4	1/4	1/4
Depth of Deviation		Radius of Turn	Direction
			Total Length
Measured Total Depth		True Vertical Depth	BHL From Lease, Unit, or Property Line: