

Oklahoma Corporation Commission
Oil & Gas Conservation Division
Post Office Box 52000
Oklahoma City, Oklahoma 73152-2000
Rule 165: 10-3-25

Form 1002A

API No.: 35153236040001

Completion Report

Spud Date: June 16, 2017

OTC Prod. Unit No.:

Drilling Finished Date: July 22, 2017

1st Prod Date:

Completion Date: February 12, 2018

Drill Type: HORIZONTAL HOLE

Well Name: ODYSSEUS 32-21-18 1HC

Purchaser/Measurer:

Location: WOODWARD 32 21N 18W
SW SE SW SW
280 FSL 700 FWL of 1/4 SEC
Derrick Elevation: 1871 Ground Elevation: 1846

First Sales Date:

Operator: CHESAPEAKE OPERATING LLC 17441
PO BOX 18496
6100 N WESTERN AVE
OKLAHOMA CITY, OK 73154-0496

Completion Type		Location Exception		Increased Density	
	Single Zone		Order No		Order No
	Multiple Zone		664811	There are no Increased Density records to display.	
	Commingled		665174		

Casing and Cement							
Type	Size	Weight	Grade	Feet	PSI	SAX	Top of CMT
SURFACE	13 3/8	54.50	J-55	1521		1655	SURFACE
INTERMEDIATE	9 5/8	40	L-80	7959		495	5198
PRODUCTION	5 1/2	23	L-80 / T-95	15030		1575	5716

Liner								
Type	Size	Weight	Grade	Length	PSI	SAX	Top Depth	Bottom Depth
There are no Liner records to display.								

Total Depth: 15040

Packer		Plug	
Depth	Brand & Type	Depth	Plug Type
There are no Packer records to display.		9300	CIBP

Initial Test Data

Test Date	Formation	Oil BBL/Day	Oil-Gravity (API)	Gas MCF/Day	Gas-Oil Ratio Cu FT/BBL	Water BBL/Day	Pumpin or Flowing	Initial Shut- In Pressure	Choke Size	Flow Tubing Pressure
-----------	-----------	----------------	----------------------	----------------	----------------------------	------------------	----------------------	---------------------------------	---------------	-------------------------

There are no Initial Data records to display.

Completion and Test Data by Producing Formation

Formation Name: NONECode:Class: TA

Formation	Top
-----------	-----

Were open hole logs run? Yes
Date last log run: June 26, 2017

Were unusual drilling circumstances encountered? No
Explanation:

Other Remarks
WAITING ON COMPLETION. PILOT HOLE 7,974' - 10,315' CEMENTED BACK TO 8,713'.

Lateral Holes
Sec: 29 TWP: 21N RGE: 18W County: WOODWARD NW SE SW SW 611 FSL 902 FWL of 1/4 SEC Depth of Deviation: 9452 Radius of Turn: 120 Direction: 356 Total Length: 5759 Measured Total Depth: 15040 True Vertical Depth: 9572 End Pt. Location From Release, Unit or Property Line: 611

FOR COMMISSION USE ONLY
<div>Status: Accepted</div> <div>1138847</div>

API NO. 153-23604
OTC PROD.
UNIT NO.

PLEASE TYPE OR USE BLACK INK ONLY
NOTE:
Attach copy of original 1002A if recompletion or reentry.

OKLAHOMA CORPORATION COMMISSION
Oil & Gas Conservation Division
Post Office Box 52000
Oklahoma City, Oklahoma 73152-2000
Rule 165:10-3-25

RECEIVED

Form 1002A
Rev. 2009

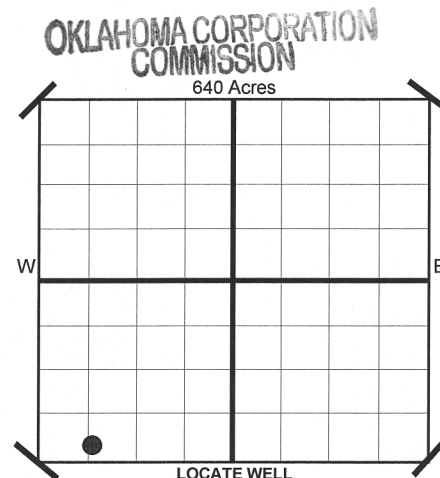
FEB 09 2018

☒ ORIGINAL
☐ AMENDED
Reason Amended

TYPE OF DRILLING OPERATION
☐ STRAIGHT HOLE ☐ DIRECTIONAL HOLE ☒ HORIZONTAL HOLE
☐ SERVICE WELL
If directional or horizontal, see reverse for bottom hole location.

COMPLETION REPORT

COUNTY	Woodward	SEC	32	TWP	21N	RGE	18W
LEASE NAME	Odysseus 32-21-18			WELL NO	1HC		
SHL	SW 1/4	SE 1/4	SW 1/4	SW 1/4	FSL	FWL OF	
ELEVATION	Derrick Fl 1,871			Ground 1,846	280	1/4 SEC	700
Latitude (if Known)				Longitude (if Known)			
OPERATOR NAME	CHESAPEAKE OPERATING, L.L.C.			OTC/OCC OPERATOR NO.	17441		
ADDRESS	P.O. BOX 18496						
CITY	OKLAHOMA CITY			STATE	OK	ZIP	73154



COMPLETION TYPE

SINGLE ZONE
MULTIPLE ZONE
Application Date
COMMINGLED
Application Date
LOCATION EXCEPTION ORDER NO. 664811/665174 (IO's)
INCREASED DENSITY ORDER NO.

CASING & CEMENT (Form 1002C must be attached)

TYPE	SIZE	WEIGHT	GRADE	FEET	PSI	SAX	TOP
CONDUCTOR							
SURFACE	13-3/8"	54.50#	J-55	1,521		1,655	Surface
INTERMEDIATE	9-5/8"	40#	L-80	7,959		495	5,198
PRODUCTION	5-1/2"	23#	L-80/T-95	15,030		1,575	5,716
LINER							
							15,040

PACKER @ _____ BRAND & TYPE _____
PACKER @ _____ BRAND & TYPE _____

PLUG @ _____ TYPE _____ PLUG @ 9,300 TYPE CIBP
PLUG @ _____ TYPE _____ PLUG @ _____ TYPE _____

TOTAL DEPTH 15,040

COMPLETION & TEST DATA BY PRODUCING FORMATION

FORMATION						No Frac
SPACING & SPACING ORDER NUMBER						
CLASS: Oil, Gas, Dry, Inj. Disp, Comm Disp, Svc	Temporarily Abandoned					
PERFORATED INTERVALS						
ACID/VOLUME						
FRACTURE TREATMENT (Fluids/Prop Amounts)						

Minimum Gas Allowable (165:10-17-7)
OR
Oil Allowable (165:10-13-3)

Gas Purchaser/Measurer
1st Sales Date

INITIAL TEST DATA

INITIAL TEST DATE					
OIL-BBL/DAY					
OIL-GRAVITY (API)					
GAS-MCF/DAY					
GAS-OIL RATIO CU FT/BBL					
WATER-BBL/DAY					
PUMPING OR FLOWING					
INITIAL SHUT-IN PRESSURE					
CHOKE SIZE					
FLOW TUBING PRESSURE					

AS SUBMITTED

A record of the formations drilled through, and pertinent remarks are presented on the reverse. I declare that I have knowledge of the contents of this report and am authorized by my organization to make this report, which was prepared by me or under my supervision and direction, with the data and facts stated herein to be true, correct, and complete to the best of my knowledge and belief.

Juanita Cooper	JUANITA COOPER - SR. REGULATORY ANALYST	2/8/2018	405-848-8000
SIGNATURE	NAME (PRINT OR TYPE)	DATE	PHONE NUMBER
P.O. BOX 18496	OKLAHOMA CITY	OK	73154
ADDRESS	CITY	STATE	ZIP
		juanita.cooper@chk.com	
		EMAIL ADDRESS	

Give formation names and tops, if available, or descriptions and thickness of formations drilled through. Show intervals cored or drillstem tested.

WELL NO. 1HC

NAMES OF FORMATIONS	TOP

FOR COMMISSION USE ONLY	
ITD on file	<input type="checkbox"/> YES <input type="checkbox"/> NO
APPROVED	DISAPPROVED
<div>2) Reject Codes</div> <div> <div></div> <div></div> <div></div> <div></div> <div></div> </div>	

Were open hole logs run? X yes no

Date Last log was run 6/26/2017

Was CO₂ encountered? yes X no at what depths?

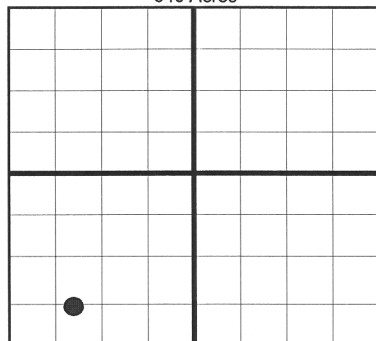
Was H₂S encountered? yes X no at what depths?

Were unusual drilling circumstances encountered? yes X no

If yes, briefly explain.

Other remarks:

Waiting on completion. Pilot hole 7,974 - 10,315 cemented back to 8,713.

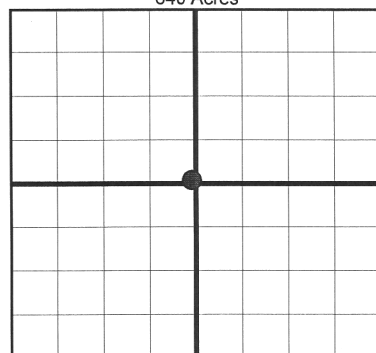


If more than three drainholes are proposed, attach a separate sheet indicating the necessary information.

Direction must be stated in degrees azimuth.
Please note, the horizontal drainhole and its end point must be located within the boundaries of the lease or spacing unit.

Directional surveys are required for all drainholes and directional wells.

640 Acres



SEC	TWP	RGE	COUNTY
Spot Location	1/4	1/4	1/4
Measured Total Depth	True Vertical Depth	Feet From 1/4 Sec Lines	FSL
		FWL	
BHL From Lease, Unit, or Property Line:			

LATERAL #1							
SEC	TWP	RGE	COUNTY				
29	21N	18W	Woodward				
Spot Location NW 1/4 SE 1/4 SW 1/4 SW 1/4				Feet From 1/4 Sec Lines	FSL 611	FWL 902	
Depth of Deviation 9,452		Radius of Turn 120		Direction 356	Total Length 5,759		
Measured Total Depth 15.040		True Vertical Depth 9.572		BHL From Lease, Unit, or Property Line: 611			

SEC	TWP	RGE	COUNTY			
Spot Location				Feet From 1/4 Sec Lines	FSL	FWL
1/4	1/4	1/4	1/4			
Depth of Deviation		Radius of Turn	Direction	Total Length		
Measured Total Depth		True Vertical Depth	BHL From Lease, Unit, or Property Line:			

SEC	TWP	RGE	COUNTY			
Spot Location						
1/4	1/4	1/4	1/4	Feet From 1/4 Sec Lines	FSL	FWL
Depth of Deviation		Radius of Turn		Direction	Total Length	
Measured Total Depth		True Vertical Depth		BHL From Lease, Unit, or Property Line:		