

Oklahoma Corporation Commission
Oil & Gas Conservation Division
Post Office Box 52000
Oklahoma City, Oklahoma 73152-2000
Rule 165: 10-3-25

Form 1002A

API No.: 35085205620002

Completion Report

Spud Date: September 23, 1981

OTC Prod. Unit No.: 085-22937

Drilling Finished Date: January 15, 1982

Amended

1st Prod Date: January 24, 1982

Amend Reason: PLUG AND ABANDONED

Completion Date: January 25, 1982

Recomplete Date: October 24, 2017

Drill Type: STRAIGHT HOLE

Well Name: E L SADLER (EDNA SADLER UNIT 2) 2

Purchaser/Measurer:

Location: LOVE 13 7S 2E
SE NW SE NE
952 FSL 1835 FWL of 1/4 SEC
Derrick Elevation: 0 Ground Elevation: 795

First Sales Date:

Operator: XTO ENERGY INC 21003

810 HOUSTON ST
FORT WORTH, TX 76102-6203

Completion Type	
X	Single Zone
	Multiple Zone
	Commingled

Location Exception	
Order No	
There are no Location Exception records to display.	

Increased Density	
Order No	
There are no Increased Density records to display.	

Casing and Cement							
Type	Size	Weight	Grade	Feet	PSI	SAX	Top of CMT
SURFACE	8 5/8	24	J-55	517		400	SURFACE
PRODUCTION	5 1/2	17	N-80	9065		1000	

Liner								
Type	Size	Weight	Grade	Length	PSI	SAX	Top Depth	Bottom Depth
There are no Liner records to display.								

Total Depth: 9066

Packer	
Depth	Brand & Type
There are no Packer records to display.	

Plug	
Depth	Plug Type
There are no Plug records to display.	

Initial Test Data										
Test Date	Formation	Oil BBL/Day	Oil-Gravity (API)	Gas MCF/Day	Gas-Oil Ratio Cu FT/BBL	Water BBL/Day	Pumpin or Flowing	Initial Shut-In Pressure	Choke Size	Flow Tubing Pressure
Oct 24, 2017	DEESE									

Completion and Test Data by Producing Formation			
Formation Name: DEESE		Code: 404DEESS	Class: PLUG AND ABANDON
Spacing Orders		Perforated Intervals	
Order No	Unit Size	From	To
24541	40	5218	5476
Acid Volumes		Fracture Treatments	
There are no Acid Volume records to display.		There are no Fracture Treatments records to display.	

Formation	Top
------------------	------------

Were open hole logs run? No
Date last log run:

Were unusual drilling circumstances encountered? No
Explanation:

Other Remarks
IRREGULAR SECTION

FOR COMMISSION USE ONLY	
Status: Accepted	1138053

RECEIVED

OCT 27 2017

Form 1002A
Rev. 2009

OKLAHOMA CORPORATION
COMMISSION

API NO. 085-20562
OTC PROD. 085-22937
UNIT NO.

PLEASE TYPE OR USE BLACK INK ONLY
NOTE:

Attach copy of original 1002A
if recompletion or reentry.

OKLAHOMA CORPORATION COMMISSION
Oil & Gas Conservation Division
Post Office Box 52000
Oklahoma City, Oklahoma 73152-2000
Rule 165:10-3-25

☐ ORIGINAL
☒ AMENDED (Reason)

Plug and Abandoned

COMPLETION REPORT

TYPE OF DRILLING OPERATION

☒ STRAIGHT HOLE ☐ DIRECTIONAL HOLE ☐ HORIZONTAL HOLE
☐ SERVICE WELL

If directional or horizontal, see reverse for bottom hole location.

COUNTY	Love	SEC	13	TWP	7S	RGE	2E
LEASE NAME	E.L. Sadler			WELL NO.	2-13		
NW 1/4	SE 1/4	NE 1/4	1/4	FSL OF 1/4 SEC	952	FWL OF 1/4 SEC	1835
ELEVATION	Ground	795'	Latitude (if known)				
OPERATOR NAME	XTO Energy Inc.			OTC/OCC OPERATOR NO.	21003		
ADDRESS	210 Park Avenue, Suite 2350						
CITY	Oklahoma City	STATE	Oklahoma	ZIP	73102		

SPUD DATE 9/23/81

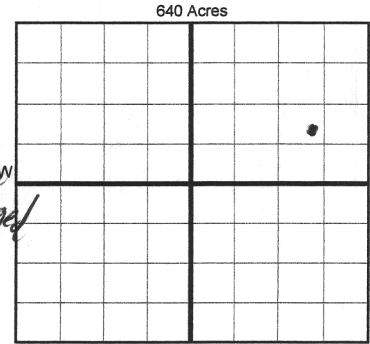
DRLG FINISHED DATE 1/15/82

DATE OF WELL COMPLETION 1/25/82

1st PROD DATE 1/24/82

RECOMP DATE 10-24-2017

Longitude (if known)



COMPLETION TYPE

<input checked="" type="checkbox"/> SINGLE ZONE
<input type="checkbox"/> MULTIPLE ZONE
Application Date
<input type="checkbox"/> COMMINGLED
Application Date
LOCATION
EXCEPTION ORDER
INCREASED DENSITY
ORDER NO.

CASING & CEMENT (Form 1002C must be attached)

TYPE	SIZE	WEIGHT	GRADE	FEET	PSI	SAX	TOP OF CMT
CONDUCTOR							
SURFACE	8 5/8"	24	J-55	517		400	Surface
INTERMEDIATE							
PRODUCTION	5 1/2"	17	N-80	9,065		1000	
LINER							

PACKER @ _____ BRAND & TYPE _____ PLUG @ _____ TYPE _____ PLUG @ _____ TYPE _____
PACKER @ _____ BRAND & TYPE _____ PLUG @ _____ TYPE _____ PLUG @ _____ TYPE _____

TOTAL DEPTH 9066'

COMPLETION & TEST DATA BY PRODUCING FORMATION

FORMATION	Deese
SPACING & SPACING ORDER NUMBER	40: 24541
CLASS: Oil, Gas, Dry, Inj, Disp, Comm Disp, Svc	Oil P&A
PERFORATED INTERVALS	5218-5476
ACID/VOLUME	
FRACTURE TREATMENT (Fluids/Prop Amounts)	

Min Gas Allowable (165:10-17-7)

Gas Purchaser/Measurer



OR

First Sales Date

Oil Allowable (165:10-13-3)

INITIAL TEST DATA

INITIAL TEST DATE	P&A 10/24/2017
OIL-BBL/DAY	
OIL-GRAVITY (API)	
GAS-MCF/DAY	
GAS-OIL RATIO CU FT/BBL	
WATER-BBL/DAY	
PUMPING OR FLOWING	
INITIAL SHUT-IN PRESSURE	
CHOKE SIZE	
FLOW TUBING PRESSURE	

AS SUBMITTED

A record of the formations drilled through, and pertinent remarks are presented on the reverse. I declare that I have knowledge of the contents of this report and am authorized by my organization to make this report, which was prepared by me or under my supervision and direction, with the data and facts stated herein to be true, correct, and complete to the best of my knowledge and belief.

Debbie Waggoner
SIGNATURE

Debbie Waggoner
NAME (PRINT OR TYPE)

10/25/2017 405-319-3243
DATE PHONE NUMBER

210 Park Avenue, Suite 2350

Oklahoma City

Ok 73102

debbie_waggoner@xtoenergy.com

ADDRESS

CITY

STATE

ZIP

EMAIL ADDRESS

FORMATION RECORD

LEASE NAME E.L. Sadler WELL NO. 2-13

NAMES OF FORMATIONS	TOP

FOR COMMISSION USE ONLY	
ITD on file	<input type="checkbox"/> YES <input type="checkbox"/> NO
APPROVED	DISAPPROVED
	2) Reject Codes <hr/> <hr/> <hr/> <hr/> <hr/>

Were open hole logs run? ___ yes X no

Date Last log was run _____

Was CO₂ encountered? ___ yes X no at what depths? _____

Was H₂S encountered? ___ yes X no at what depths? _____

Were unusual drilling circumstances encountered? ___ yes X no

If yes, briefly explain below

Other remarks: Irregular Section

640 Acres

Direction must be stated in degrees azimuth.
Please note, the horizontal drainhole and its end point must be located within the boundaries of the lease or spacing unit.

640 Acres

A blank 10x10 grid for graphing. The grid is composed of 10 columns and 10 rows of squares. A thick horizontal line runs across the middle of the grid, separating the top 5 rows from the bottom 5 rows. A thick vertical line runs down the middle of the grid, separating the left 5 columns from the right 5 columns. The grid is used for graphing the function $y = \frac{1}{2}x^2$ for x from -10 to 10.

SEC	TWP	RGE	COUNTY
Spot Location			
1/4	1/4	1/4	1/4
Measured Total Depth		True Vertical Depth	Feet From 1/4 Sec Lines FSL FWL
BHL From Lease, Unit, or Property Line:			

LATERAL #1						
SEC	TWP	RGE	COUNTY			
Spot Location						
1/4		1/4		1/4		
Feet From 1/4 Sec Lines		FSL		FWL		
Depth of Deviation		Radius of Turn		Direction		Total Length
Measured Total Depth		True Vertical Depth		BHL From Lease, Unit, or Property Line:		

SEC	TWP	RGE	COUNTY
Spot Location			
1/4	1/4	1/4	1/4
Feet From 1/4 Sec Lines		FSL	FWL
Depth of Deviation	Radius of Turn	Direction	Total Length
Measured Total Depth		True Vertical Depth	
BHL From Lease, Unit, or Property Line:			

SEC	TWP	RGE	COUNTY
Spot Location			
1/4	1/4	1/4	1/4
Feet From 1/4 Sec Lines		FSL	FWL
Depth of Deviation	Radius of Turn	Direction	Total Length
Measured Total Depth		True Vertical Depth	
BHL From Lease, Unit, or Property Line:			