

Oklahoma Corporation Commission
Oil & Gas Conservation Division
Post Office Box 52000
Oklahoma City, Oklahoma 73152-2000
Rule 165: 10-3-25

Form 1002A

API No.: 35003232830000

Completion Report

Spud Date: August 09, 2017

OTC Prod. Unit No.: 003-222379

Drilling Finished Date: August 24, 2017

1st Prod Date: October 10, 2017

Completion Date: October 09, 2017

Drill Type: HORIZONTAL HOLE

Min Gas Allowable: Yes

Well Name: BRUNER 2412 2H-04 B

Purchaser/Measurer: SEMGAS

Location: ALFALFA 4 24N 12W
SW SE SW SE
255 FSL 1950 FEL of 1/4 SEC
Latitude: 36.579684598 Longitude: -98.486582976
Derrick Elevation: 0 Ground Elevation: 1330

First Sales Date: 10/16/2017

Operator: MIDSTATES PETROLEUM CO LLC 23079

321 S BOSTON AVE STE 1000
TULSA, OK 74103-3322

Completion Type		Location Exception		Increased Density	
X	Single Zone	Order No		Order No	
	Multiple Zone	670071		667109	
	Commingled				

Casing and Cement							
Type	Size	Weight	Grade	Feet	PSI	SAX	Top of CMT
SURFACE	13 3/8	54.5	J-55	492		580	SURFACE
INTERMEDIATE	9 5/8	36	J-55	1284		490	SURFACE
PRODUCTION	7	26	P-110	7238		495	4119

Liner								
Type	Size	Weight	Grade	Length	PSI	SAX	Top Depth	Bottom Depth
LINER	4.5	11.6	P-110	5445	0	560	6934	12379

Total Depth: 12379

Packer	
Depth	Brand & Type
There are no Packer records to display.	

Plug	
Depth	Plug Type
There are no Plug records to display.	

Initial Test Data

Test Date	Formation	Oil BBL/Day	Oil-Gravity (API)	Gas MCF/Day	Gas-Oil Ratio Cu FT/BBL	Water BBL/Day	Pumpin or Flowing	Initial Shut-In Pressure	Choke Size	Flow Tubing Pressure
Oct 19, 2017	MISSISSIPPIAN	188	31	295	1569	3564	PUMPING	71	64/64	136

Completion and Test Data by Producing Formation

Formation Name: MISSISSIPPIAN

Code: 359MSSP

Class: OIL

Spacing Orders

Order No	Unit Size
661590	640

Perforated Intervals

From	To
7278	12278

Acid Volumes

5,020 BARRELS 15% GELLED AND RET ACID, 785 BARRELS 15% HCL

Fracture Treatments

103,607 BARRELS SLICK WATER, 171,358 POUNDS ROCK SALT

Formation	Top
ENDICOTT	4610
HASKELL	4981
TONKAWA	5036
AVANT	5313
COTTAGE GROVE	5370
HOGSHOOTER	5500
BIG LIME	5728
OSWEGO	5780
CHEROKEE	5881
MISSISSIPPI LIME	6186

Were open hole logs run? No
Date last log run:

Were unusual drilling circumstances encountered? No
Explanation:

Other Remarks

OCC - THIS DOCUMENT IS ACCEPTED BASED ON THE DATA SUBMITTED THE FINAL LOCATION EXCEPTION HAS NOT BEEN SUBMITTED.

Lateral Holes

Sec: 4 TWP: 24N RGE: 12W County: ALFALFA

NW NE NE NW

165 FNL 1982 FWL of 1/4 SEC

Depth of Deviation: 7468 Radius of Turn: 1567 Direction: 1 Total Length: 5141

Measured Total Depth: 12379 True Vertical Depth: 6202 End Pt. Location From Release, Unit or Property Line: 165

FOR COMMISSION USE ONLY

Status: Accepted

1138015

PLEASE TYPE OR USE BLACK INK ONLY
FORMATION RECORD

Give formation names and tops, if available, or descriptions and thickness of formations drilled through. Show intervals cored or drillstem tested.

NAMES OF FORMATIONS	TOP
ENDICOTT	4,610
HASKELL	4,981
TONKAWA	5,036
AVANT	5,313
COTTAGE GROVE	5,370
HOGSHOOTER	5,500
BIG LIME	5,728
OSWEGO	5,780
CHEROKEE	5,881
MISSISSIPPI LIME	6,186

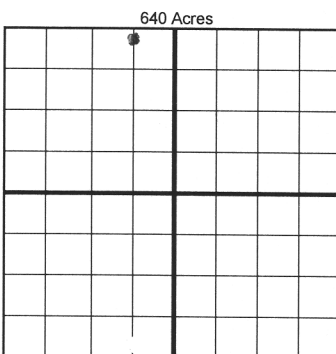
LEASE NAME Bruner 2412

WELL NO. 2H-04 B

FOR COMMISSION USE ONLY	
ITD on file <input type="checkbox"/> YES <input type="checkbox"/> NO	
APPROVED _____	DISAPPROVED _____
2) Reject Codes	

Were open hole logs run?	<input type="checkbox"/> yes <input checked="" type="checkbox"/> no
Date Last log was run	<u>N/A</u>
Was CO ₂ encountered?	<input type="checkbox"/> yes <input checked="" type="checkbox"/> no at what depths? _____
Was H ₂ S encountered?	<input type="checkbox"/> yes <input checked="" type="checkbox"/> no at what depths? _____
Were unusual drilling circumstances encountered?	<input type="checkbox"/> yes <input checked="" type="checkbox"/> no
If yes, briefly explain below	

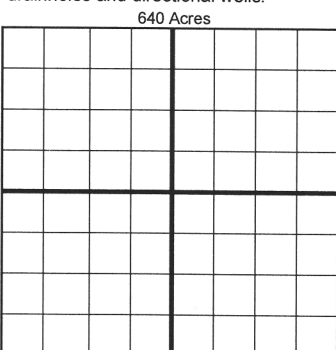
Other remarks:



If more than three drainholes are proposed, attach a separate sheet indicating the necessary information.

Direction must be stated in degrees azimuth.
Please note, the horizontal drainhole and its end point must be located within the boundaries of the lease or spacing unit.

Directional surveys are required for all drainholes and directional wells.



BOTTOM HOLE LOCATION FOR DIRECTIONAL HOLE

SEC	TWP	RGE	COUNTY
Spot Location	1/4	1/4	1/4
Measured Total Depth	True Vertical Depth	BHL From Lease, Unit, or Property Line:	

BOTTOM HOLE LOCATION FOR HORIZONTAL HOLE: (LATERALS)

LATERAL #1

SEC	TWP	RGE	COUNTY
04	24N	12W	Alfalfa
Spot Location	1/4	1/4	1/4
Depth of Deviation	Radius of Turn	Direction	Total Length
7,468	1,567	1:4	5,141'
Measured Total Depth	True Vertical Depth	BHL From Lease, Unit, or Property Line:	
12,379'	6,202'	164' 165	

Per Survey 165FN 1982

LATERAL #2

SEC	TWP	RGE	COUNTY
Spot Location	1/4	1/4	1/4
Depth of Deviation	Radius of Turn	Direction	Total Length
Measured Total Depth	True Vertical Depth	BHL From Lease, Unit, or Property Line:	

LATERAL #3

SEC	TWP	RGE	COUNTY
Spot Location	1/4	1/4	1/4
Depth of Deviation	Radius of Turn	Direction	Total Length
Measured Total Depth	True Vertical Depth	BHL From Lease, Unit, or Property Line:	