

Oklahoma Corporation Commission
Oil & Gas Conservation Division
Post Office Box 52000
Oklahoma City, Oklahoma 73152-2000
Rule 165: 10-3-25

Form 1002A

API No.: 35103008930002

Completion Report

Spud Date: June 25, 1964

OTC Prod. Unit No.:

Drilling Finished Date: July 10, 1964

Amended

1st Prod Date: August 11, 1964

Amend Reason: TERMINATED DISPOSAL ORDER AND ADDED CIBP

Completion Date: August 11, 1964

Recomplete Date: May 12, 2017

Drill Type: STRAIGHT HOLE

Well Name: HARDROW 1

Purchaser/Measurer:

Location: NOBLE 15 23N 2W
C NW SE
1980 FSL 660 FWL of 1/4 SEC
Derrick Elevation: 966 Ground Elevation: 959

First Sales Date:

Operator: CHESAPEAKE OPERATING LLC 17441
PO BOX 18496
6100 N WESTERN AVE
OKLAHOMA CITY, OK 73154-0496

Completion Type		Location Exception		Increased Density	
	Single Zone	Order No		Order No	
	Multiple Zone	There are no Location Exception records to display.		There are no Increased Density records to display.	
	Commingled				

Casing and Cement							
Type	Size	Weight	Grade	Feet	PSI	SAX	Top of CMT
SURFACE	10 3/4	45.50	J-55	256		150	SURFACE
PRODUCTION	4 1/2	10.5	J-55	5507		550	3328

Liner								
Type	Size	Weight	Grade	Length	PSI	SAX	Top Depth	Bottom Depth
There are no Liner records to display.								

Total Depth: 5508

Packer		Plug	
Depth	Brand & Type	Depth	Plug Type
There are no Packer records to display.		3800	CIBP

Initial Test Data										
Test Date	Formation	Oil BBL/Day	Oil-Gravity (API)	Gas MCF/Day	Gas-Oil Ratio Cu FT/BBL	Water BBL/Day	Pumpin or Flowing	Initial Shut-In Pressure	Choke Size	Flow Tubing Pressure
Oct 19, 2017	ARBUCKLE									

Completion and Test Data by Producing Formation

Formation Name: ARBUCKLE

Code: 169ABCK

Class: DRY

Spacing Orders

Order No

Unit Size

There are no Spacing Order records to display.

Perforated Intervals

From

To

4149

5263

Acid Volumes

There are no Acid Volume records to display.

Fracture Treatments

There are no Fracture Treatments records to display.

Formation Name: REAGAN

Code: 153REGN

Class: DRY

Spacing Orders

Order No

Unit Size

There are no Spacing Order records to display.

Perforated Intervals

From

To

5439

5461

Acid Volumes

There are no Acid Volume records to display.

Fracture Treatments

There are no Fracture Treatments records to display.

Formation	Top
SEE ORIGINAL 1002A	0

Were open hole logs run? Yes

Date last log run: July 08, 1964

Were unusual drilling circumstances encountered? No

Explanation:

Other Remarks

There are no Other Remarks.

FOR COMMISSION USE ONLY

Status: Accepted

1138030

API NO. 103-00893
UTC PROD.
UNIT NO. N/A

PLEASE TYPE OR USE BLACK INK ONLY
NOTE:
Attach copy of original 1002A if recompletion or reentry.

OKLAHOMA CORPORATION COMMISSION
Oil & Gas Conservation Division
Post Office Box 52000
Oklahoma City, Oklahoma 73152-2000
Rule 165:10-3-25

RECEIVED

OCT 25 2017

Form 1002A
Rev. 2009

☐ ORIGINAL
☒ AMENDED
Reason Amended Terminated disposal order & added CIBP

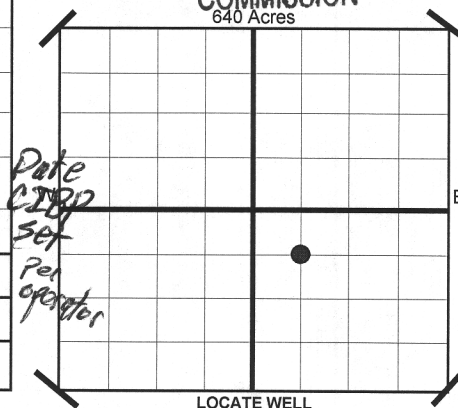
TYPE OF DRILLING OPERATION
☒ STRAIGHT HOLE ☐ DIRECTIONAL HOLE ☐ HORIZONTAL HOLE
SERVICE WELL
If directional or horizontal, see reverse for bottom hole location.

COUNTY Noble SEC 15 TWP 23N RGE 2W
LEASE NAME Hardrow WELL NO 1
SHL 1/4 C 1/4 NW 1/4 SE 1/4 FSL 1,980 FWL OF 1/4 SEC 660
ELEVATION Derrick FI 966 Ground 959 Latitude (if Known)
OPERATOR NAME CHESAPEAKE OPERATING, L.L.C. OTC/OCC OPERATOR NO. 17441
ADDRESS P.O. BOX 18496
CITY OKLAHOMA CITY STATE OK ZIP 73154

COMPLETION REPORT

SPUD DATE 6/25/1964
DRLG FINISHED DATE 7/10/1964
DATE OF WELL COMPLETION 8/11/1964
1ST PROD DATE 8/11/1964
RECOMP DATE 5-12-2017
Longitude (if Known)

OKLAHOMA CORPORATION COMMISSION
640 Acres



COMPLETION TYPE

☒ SINGLE ZONE
☐ MULTIPLE ZONE
Application Date
COMMINGLED
Application Date
LOCATION EXCEPTION ORDER NO. N/A
INCREASED DENSITY ORDER NO. N/A

CASING & CEMENT (Form 1002C must be attached)

TYPE	SIZE	WEIGHT	GRADE	FEET	PSI	SAX	TOP
CONDUCTOR							
SURFACE	10-3/4"	45.50#	J-55	256		150	Surface
INTERMEDIATE							
PRODUCTION	4-1/2"	10.5#	J-55	5,507		550	3,328
LINER							

PACKER @ BRAND & TYPE PLUG @ TYPE PLUG @ 3,800 TYPE CIBP TOTAL DEPTH 5,508
PACKER @ BRAND & TYPE PLUG @ TYPE PLUG @ TYPE

COMPLETION & TEST DATA BY PRODUCING FORMATION

16AABCK 153 REGN

FORMATION	Arbuckle	Reagan				
SPACING & SPACING ORDER NUMBER	N/A	N/A				
CLASS: Oil, Gas, Dry, Inj. Disp, Comm Disp, Svc	below bridge plug	below bridge plug				
PERFORATED INTERVALS	4,149 - 5,263	5,439 - 5,461				
ACID/VOLUME						
FRACTURE TREATMENT (Fluids/Prop Amounts)						

Minimum Gas Allowable (165:10-17-7)

Gas Purchaser/Measurer

☐

OR

1st Sales Date

Oil Allowable (165:10-13-3)

INITIAL TEST DATA

INITIAL TEST DATE	10/19/2017				
OIL-BBL/DAY	0				
OIL-GRAVITY (API)					
GAS-MCF/DAY	0				
GAS-OIL RATIO CU FT/BBL					
WATER-BBL/DAY	0				
PUMPING OR FLOWING					
INITIAL SHUT-IN PRESSURE					
CHOKE SIZE					
FLOW TUBING PRESSURE					

AS SUBMITTED

A record of the formations drilled through, and pertinent remarks are presented on the reverse. I declare that I have knowledge of the contents of this report and am authorized by my organization to make this report, which was prepared by me or under my supervision and direction, with the data and facts stated herein to be true, correct, and complete to the best of my knowledge and belief.

SIGNATURE: JEFF BULL - REGULATORY MANAGER
P.O. BOX 18496 OKLAHOMA CITY OK 73154
ADDRESS CITY STATE ZIP
DATE: 10/24/2017
PHONE NUMBER: 405-848-8000
EMAIL ADDRESS: juanita.cooper@chk.com

PLEASE TYPE OR USE BLACK INK ONLY
FORMATION RECORD

Give formation names and tops, if available, or descriptions and thickness of formations drilled through. Show intervals cored or drillstem tested.

LEASE NAME Hardrow

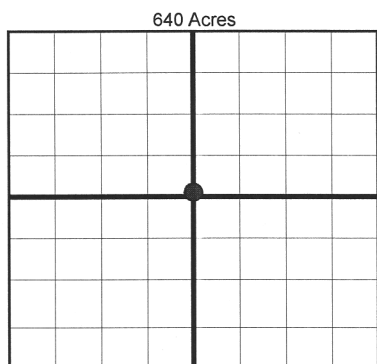
WELL NO. 1

NAMES OF FORMATIONS	TOP
See original 1002A	

FOR COMMISSION USE ONLY	
ITD on file <input type="checkbox"/> YES <input type="checkbox"/> NO	
APPROVED _____	DISAPPROVED _____
2) Reject Codes	

Were open hole logs run?	<input checked="" type="checkbox"/> yes	<input type="checkbox"/> no
Date Last log was run	7/8/1964	
Was CO ₂ encountered?	<input type="checkbox"/> yes	<input checked="" type="checkbox"/> no at what depths?
Was H ₂ S encountered?	<input type="checkbox"/> yes	<input checked="" type="checkbox"/> no at what depths?
Were unusual drilling circumstances encountered?	<input type="checkbox"/> yes	<input checked="" type="checkbox"/> no
If yes, briefly explain.		

Other remarks:



BOTTOM HOLE LOCATION FOR DIRECTIONAL HOLE

SEC	TWP	RGE	COUNTY
Spot Location	1/4	1/4	1/4
Measured Total Depth	True Vertical Depth		Feet From 1/4 Sec Lines FSL
BHL From Lease, Unit, or Property Line:			

BOTTOM HOLE LOCATION FOR HORIZONTAL HOLE: (LATERALS)

SEC	TWP	RGE	COUNTY
Spot Location	1/4	1/4	1/4
Depth of Deviation	Radius of Turn	Direction	Total Length
Measured Total Depth	True Vertical Depth		BHL From Lease, Unit, or Property Line:

LATERAL #2

SEC	TWP	RGE	COUNTY
Spot Location	1/4	1/4	1/4
Depth of Deviation	Radius of Turn	Direction	Total Length
Measured Total Depth	True Vertical Depth		BHL From Lease, Unit, or Property Line:

LATERAL #3

SEC	TWP	RGE	COUNTY
Spot Location	1/4	1/4	1/4
Depth of Deviation	Radius of Turn	Direction	Total Length
Measured Total Depth	True Vertical Depth		BHL From Lease, Unit, or Property Line:

If more than three drainholes are proposed, attach a separate sheet indicating the necessary information.

Direction must be stated in degrees azimuth. Please note, the horizontal drainhole and its end point must be located within the boundaries of the lease or spacing unit.

Directional surveys are required for all drainholes and directional wells.

