

Oklahoma Corporation Commission  
Oil & Gas Conservation Division  
Post Office Box 52000  
Oklahoma City, Oklahoma 73152-2000  
Rule 165: 10-3-25

Form 1002A

API No.: 35003223120001

**Completion Report**

Spud Date: June 10, 2012

OTC Prod. Unit No.: 003-208681

Drilling Finished Date: June 30, 2012

1st Prod Date: September 05, 2012

**Amended**

Completion Date: August 01, 2012

Amend Reason: RECLASSIFY WELL AS TEMPORARILY ABANDONED

Recomplete Date: November 15, 2017

**Drill Type: HORIZONTAL HOLE**

Well Name: SMITH FARMS 13-29-9 1H

Purchaser/Measurer:

Location: ALFALFA 24 29N 9W  
N2 N2 NW NW  
270 FNL 660 FWL of 1/4 SEC  
Derrick Elevation: 1302 Ground Elevation: 1284

First Sales Date:

Operator: CHESAPEAKE OPERATING LLC 17441  
PO BOX 18496  
6100 N WESTERN AVE  
OKLAHOMA CITY, OK 73154-0496

Completion Type		Location Exception		Increased Density	
X	Single Zone	Order No		Order No	
	Multiple Zone	606886		There are no Increased Density records to display.	
	Commingled				

Casing and Cement							
Type	Size	Weight	Grade	Feet	PSI	SAX	Top of CMT
SURFACE	9 5/8	36	J-55	1005		430	SURFACE
PRODUCTION	7	26	P-110	5181		230	2794

Liner								
Type	Size	Weight	Grade	Length	PSI	SAX	Top Depth	Bottom Depth
There are no Liner records to display.								

**Total Depth: 8620**

Packer		Plug	
Depth	Brand & Type	Depth	Plug Type
5011	MODEL R	There are no Plug records to display.	

Initial Test Data										
Test Date	Formation	Oil BBL/Day	Oil-Gravity (API)	Gas MCF/Day	Gas-Oil Ratio Cu FT/BBL	Water BBL/Day	Pumpin or Flowing	Initial Shut-In Pressure	Choke Size	Flow Tubing Pressure
Oct 14, 2017	MISSISSIPPIAN									

Completion and Test Data by Producing Formation			
Formation Name: MISSISSIPPIAN		Code: 359MSSP	Class: TA
<b>Spacing Orders</b>		<b>Perforated Intervals</b>	
<b>Order No</b>	<b>Unit Size</b>	<b>From</b>	<b>To</b>
597765	640	There are no Perf. Intervals records to display.	
<b>Acid Volumes</b>		<b>Fracture Treatments</b>	
There are no Acid Volume records to display.		There are no Fracture Treatments records to display.	

Formation	Top
MISSISSIPPIAN	5079

Were open hole logs run? No  
Date last log run:  
  
Were unusual drilling circumstances encountered? No  
Explanation:

Other Remarks
THIS WELL IS AN OPEN HOLE COMPLETION FROM THE BOTTOM OF THE 7" CASING AT 5,181' TO TERMINUS AT 8,620'.

Lateral Holes
Sec: 13 TWP: 29N RGE: 9W County: ALFALFA  SE   NW   NW   NW  533 FNL   652 FWL of 1/4 SEC  Depth of Deviation: 4526 Radius of Turn: 326 Direction: 3 Total Length: 3541  Measured Total Depth: 8620 True Vertical Depth: 4852   End Pt. Location From Release, Unit or Property Line: 533

FOR COMMISSION USE ONLY	
Status: Accepted	1138031

API NO. 003-22312  
OTC PROD. UNIT NO. 003-208681

PLEASE TYPE OR USE BLACK INK ONLY  
NOTE: Attach copy of original 1002A if recompletion or reentry.

OKLAHOMA CORPORATION COMMISSION  
Oil & Gas Conservation Division  
Post Office Box 52000  
Oklahoma City, Oklahoma 73152-2000  
Rule 165:10-3-25

RECEIVED  
Form 1002A  
Rev. 2009

OCT 23 2017

OKLAHOMA CORPORATION  
COMMISSION

ORIGINAL  
AMENDED  
Reason Amended *Reclassify well as temporarily abandoned*

TYPE OF DRILLING OPERATION

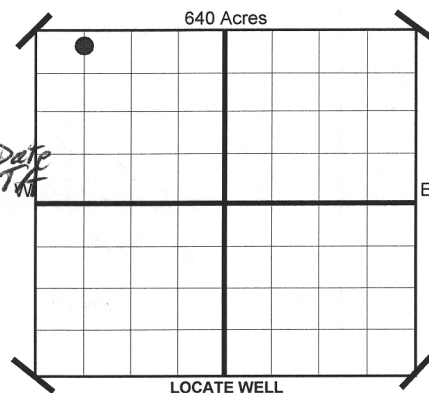
STRAIGHT HOLE SERVICE WELL  
DIRECTIONAL HOLE  
HORIZONTAL HOLE

If directional or horizontal, see reverse for bottom hole location.

COUNTY	ALFALFA	SEC	24	TWP	29N	RGE	9W
LEASE NAME	SMITH FARMS 13-29-9			WELL NO	1H		
SHL	N2 1/4 N2 1/4 NW 1/4 NW 1/4			FWL OF	270 1/4 SEC 660		
ELEVATION	1,302			Ground	1,284		
Derrick Fl	1,302			Ground	1,284		
OPERATOR NAME	CHESAPEAKE OPERATING, INC.			OTC/OCC OPERATOR NO.	17441		
ADDRESS	P.O. BOX 18496						
CITY	OKLAHOMA CITY			STATE	OK		ZIP 73154

COMPLETION REPORT

SPUD DATE	6/10/2012
DRLG FINISHED DATE	6/30/2012
DATE OF WELL COMPLETION	8/1/2012
1ST PROD DATE	9/5/2012
RECOMP DATE	11-15-2017
Longitude (if Known)	



COMPLETION TYPE

<input checked="" type="checkbox"/>	SINGLE ZONE
<input type="checkbox"/>	MULTIPLE ZONE
<input type="checkbox"/>	Application Date
<input type="checkbox"/>	COMINGLED
<input type="checkbox"/>	Application Date
LOCATION EXCEPTION ORDER NO.	606886 (F.O.)
INCREASED DENSITY ORDER NO.	N/A

CASING & CEMENT (Form 1002C must be attached)

TYPE	SIZE	WEIGHT	GRADE	FEET	PSI	SAX	TOP
CONDUCTOR							
SURFACE	9 5/8"	36#	J-55	1,005		430	Surface
INTERMEDIATE							
PRODUCTION	7"	26#	P-110	5,181		230	2,794
LINER							

PACKER @ 5.011 BRAND & TYPE Model R  
PACKER @ BRAND & TYPE

PLUG @ TYPE PLUG @ TYPE  
PLUG @ TYPE PLUG @ TYPE

TOTAL DEPTH 8,620

COMPLETION & TEST DATA BY PRODUCING FORMATION

FORMATION	MISSISSIPPIAN
SPACING & SPACING	640
ORDER NUMBER	597765
CLASS: Oil, Gas, Dry, Inj. Disp, Comm Disp, Svc	Temporarily Abandoned
PERFORATED INTERVALS	*OPEN HOLE
ACID/VOLUME	
FRACTURE TREATMENT (Fluids/Prop Amounts)	

Minimum Gas Allowable (165:10-17-7)  
OR  
Oil Allowable (165:10-13-3)

Gas Purchaser/Measurer  
1st Sales Date

INITIAL TEST DATA

INITIAL TEST DATE	10/14/2017
OIL-BBL/DAY	0
OIL-GRAVITY ( API)	
GAS-MCF/DAY	0
GAS-OIL RATIO CU FT/BBL	
WATER-BBL/DAY	0
PUMPING OR FLOWING	
INITIAL SHUT-IN PRESSURE	
CHOKE SIZE	
FLOW TUBING PRESSURE	

AS SUBMITTED

A record of the formations drilled through, and pertinent remarks are presented on the reverse. I declare that I have knowledge of the contents of this report and am authorized by my organization to make this report, which was prepared by me or under my supervision and direction, with the data and facts stated herein to be true, correct, and complete to the best of my knowledge and belief.

SIGNATURE: JP POWELL, REGULATORY SPECIALIST  
P.O. BOX 18496 OKLAHOMA CITY OK 73154  
ADDRESS CITY STATE ZIP  
DATE: 10/19/2017  
PHONE NUMBER: 405-848-8000  
EMAIL ADDRESS: jp.powell@chk.com

Give formation names and tops, if available, or descriptions and thickness of formations drilled through. Show intervals cored or drillstem tested.

WELL NO. 1H


NAMES OF FORMATIONS	TOP
MISSISSIPPIAN	5,079

FOR COMMISSION USE ONLY	
ITD on file	<input type="checkbox"/> YES <input type="checkbox"/> NO
APPROVED	DISAPPROVED
<div style="display: flex; justify-content: space-between;"> <div style="width: 45%;"></div> <div style="width: 50%;">           2) Reject Codes           <div style="border-bottom: 1px solid black; height: 15px; margin-bottom: 5px;"></div> <div style="border-bottom: 1px solid black; height: 15px; margin-bottom: 5px;"></div> <div style="border-bottom: 1px solid black; height: 15px; margin-bottom: 5px;"></div> <div style="border-bottom: 1px solid black; height: 15px; margin-bottom: 5px;"></div> <div style="border-bottom: 1px solid black; height: 15px;"></div> </div> </div>	

Were open hole logs run?	_____ yes	<u>X</u> no
Date Last log was run	N/A	
Was CO <sub>2</sub> encountered?	_____ yes	<u>X</u> no at what depths?
Was H <sub>2</sub> S encountered?	_____ yes	<u>X</u> no at what depths?
Were unusual drilling circumstances encountered?	_____ yes	<u>X</u> no
If yes, briefly explain.		

\*This well is an open hole completion from the bottom of the 7" casing at 5181' to terminus at 8620'.

640 Acres

A 10x10 grid representing 640 acres. A single square in the top-left corner is shaded black, representing 64 acres.

Direction must be stated in degrees azimuth.  
Please note, the horizontal drainhole and its end point must be located within the boundaries of the lease or spacing unit.

640 Acres

SEC	TWP	RGE	COUNTY
Spot Location	1/4	1/4	1/4
Measured Total Depth	True Vertical Depth	Feet From 1/4 Sec Lines	FSL
		FWL	
BHL From Lease, Unit, or Property Line:			

LATERAL #1											
SEC	13	TWP	29N	RGE	9W	COUNTY					
						ALFALFA					
Spot Location						Feet From 1/4 Sec Lines		FNL	533	FWL	652
SE 1/4		NW 1/4		NW 1/4		NW 1/4					
Depth of Deviation				Radius of Turn		Direction		Total Length			
4,526				326		3				3,541	
Measured Total Depth				True Vertical Depth		BHL From Lease, Unit, or Property Line:					
8,620				4,852		533					

SEC	TWP	RGE	COUNTY			
Spot Location				Feet From 1/4 Sec Lines	FSL	FWL
1/4	1/4	1/4	1/4			
Depth of Deviation		Radius of Turn		Direction	Total Length	
Measured Total Depth		True Vertical Depth		BHL From Lease, Unit, or Property Line:		

SEC	TWP	RGE	COUNTY			
Spot Location				Feet From 1/4 Sec Lines	FSL	FWL
1/4	1/4	1/4	1/4			
Depth of Deviation		Radius of Turn		Direction	Total Length	
Measured Total Depth		True Vertical Depth		BHL From Lease, Unit, or Property Line:		