

Oklahoma Corporation Commission
Oil & Gas Conservation Division
Post Office Box 52000
Oklahoma City, Oklahoma 73152-2000
Rule 165: 10-3-25

Form 1002A

API No.: 35093250710000

Completion Report

Spud Date: July 05, 2017

OTC Prod. Unit No.: 093-222264-0-0000

Drilling Finished Date: July 26, 2017

1st Prod Date: September 18, 2017

Completion Date: September 12, 2017

Drill Type: HORIZONTAL HOLE

Min Gas Allowable: Yes

Well Name: ALMOND JOY 21-1H

Purchaser/Measurer: TARGA

Location: MAJOR 16 20N 16W
SE SE SE SW
233 FSL 2490 FWL of 1/4 SEC
Derrick Elevation: 27 Ground Elevation: 1699

First Sales Date: 10/02/2017

Operator: CARRERA ENERGY LLC 23514
PO BOX 5036
901 W MISSOURI AVE
MIDLAND, TX 79704-5036

Completion Type		Location Exception		Increased Density	
X	Single Zone	Order No		Order No	
	Multiple Zone	665181		There are no Increased Density records to display.	
	Commingled				

Casing and Cement							
Type	Size	Weight	Grade	Feet	PSI	SAX	Top of CMT
CONDUCTOR	20	94	H-40	120			GROUT
SURFACE	9.625	36	J-55	840		375	SURFACE
PRODUCTION	7.0	29	HCP	9815		800	2892

Liner								
Type	Size	Weight	Grade	Length	PSI	SAX	Top Depth	Bottom Depth
LINER	4.5	11.6	HCP	5797	0	400	8708	14505

Total Depth: 14504

Packer	
Depth	Brand & Type
There are no Packer records to display.	

Plug	
Depth	Plug Type
There are no Plug records to display.	

Initial Test Data

Test Date	Formation	Oil BBL/Day	Oil-Gravity (API)	Gas MCF/Day	Gas-Oil Ratio Cu FT/BBL	Water BBL/Day	Pumpin or Flowing	Initial Shut-In Pressure	Choke Size	Flow Tubing Pressure
Oct 04, 2017	MISS (MERAMEC-OSAGE)	240	35.4	903	3763	2190	FLOWING	3600	30/64	1050
Oct 13, 2017	MISS (MERAMEC-OSAGE)	434	39.3	1313	3025	2955	FLOWING	3600	38/64	800

Completion and Test Data by Producing Formation

Formation Name: MISS (MERAMEC-OSAGE)

Code: 354MMROG

Class: OIL

Spacing Orders

Order No	Unit Size
80607	640
638110	640

Perforated Intervals

From	To
9925	14394

Acid Volumes

892 BARRELS 15% HCL

Fracture Treatments

342,659 BARRELS SR + 799 BARRELS 15 POUNDS LINEAR, 2,521,840 POUNDS 100 MESH, 8,833,438 POUNDS 40/70 WHITE + 733,200 POUNDS 40/70 CRC

Formation	Top
AVANT	6841
HOGSHOOTER	7121
CHECKERBOARD	7362
BIG LIME	7451
OSWEGO	7492
CHEROKEE HS	7626
CHESTER	8299
MANNING	8960
MERAMEC	9550

Were open hole logs run? No

Date last log run: August 22, 2017

Were unusual drilling circumstances encountered? No

Explanation:

Other Remarks

OCC - THIS DOCUMENT IS ACCEPTED BASED ON THE DATA SUBMITTED THE FINAL LOCATION EXCEPTION HAS NOT BEEN SUBMITTED.

Lateral Holes

Sec: 21 TWP: 20N RGE: 16W County: MAJOR

SE SE SE SW

200 FSL 2501 FWL of 1/4 SEC

Depth of Deviation: 8812 Radius of Turn: 502 Direction: 181 Total Length: 5301

Measured Total Depth: 14504 True Vertical Depth: 9499 End Pt. Location From Release, Unit or Property Line: 200

API
NO. 35 093 25071
OTC PROD.
UNIT NO. 093 22264 0 0000

PLEASE TYPE OR USE BLACK INK ONLY

NOTE:

Attach copy of original 1002A
if recompletion or reentry.

OKLAHOMA CORPORATION COMMISSION
Oil & Gas Conservation Division
Post Office Box 52000
Oklahoma City, Oklahoma 73152-2000
Rule 165:10-3-25

RECEIVED

OCT 30 2017

OKLAHOMA CORPORATION
COMMISSION

Form 1002A
Rev. 2009

☒ ORIGINAL
☐ AMENDED (Reason)

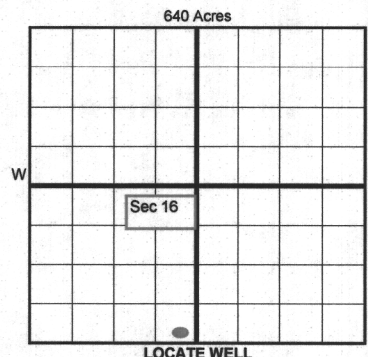
COMPLETION REPORT

TYPE OF DRILLING OPERATION

☐ STRAIGHT HOLE ☐ DIRECTIONAL HOLE ☒ HORIZONTAL HOLE
☐ SERVICE WELL

If directional or horizontal, see reverse for bottom hole location.

COUNTY	Major	SEC	16	TWP	20N	RGE	16W
LEASE NAME	Almond Joy			WELL NO.	21-1H		
SE 1/4	SE 1/4	SE 1/4	SW 1/4	FSL OF 1/4 SEC	233	FWL OF 1/4 SEC	2490
ELEVATION	Derrick FL 27			Ground	1699		
Latitude (if known)	36.202677728°N			Longitude (if known)	98.912041765°W		
OPERATOR NAME	Carrera Energy, LLC			OTC/OCC OPERATOR NO.	23514		
ADDRESS	901 Missouri						
CITY	Midland,		STATE	Texas		ZIP	79701



COMPLETION TYPE

<input checked="" type="checkbox"/> SINGLE ZONE
<input type="checkbox"/> MULTIPLE ZONE
Application Date
<input type="checkbox"/> COMMINGLED
Application Date
LOCATION
EXCEPTION ORDER
INCREASED DENSITY
ORDER NO.

665181 E.O.

CASING & CEMENT (Form 1002C must be attached)

TYPE	SIZE	WEIGHT	GRADE	FEET	PSI	SAX	TOP OF CMT
CONDUCTOR	20	94	H-40	120			Grout
SURFACE	9.625	36	J-55	840		375 360	Surface
INTERMEDIATE							
PRODUCTION	7.0	29	HCP	9815		800	2892 CBL
LINER	4.5	11.6	HCP	8708-14505		400	8708
						TOTAL DEPTH	14,504

PACKER @ _____ BRAND & TYPE _____ PLUG @ _____ TYPE _____ PLUG @ _____ TYPE _____
PACKER @ _____ BRAND & TYPE _____ PLUG @ _____ TYPE _____ PLUG @ _____ TYPE _____

COMPLETION & TEST DATA BY PRODUCING FORMATION

FORMATION	Miss (Meramec-Osage)
SPACING & SPACING ORDER NUMBER	640 acres 638110 & 80607
CLASS: Oil, Gas, Dry, Inj, Disp, Comm Disp, Svc	Oil
PERFORATED INTERVALS	14,394-9,925
ACID/VOLUME	892 bbls 15% HCL
FRACTURE TREATMENT (Fluids/Prop Amounts)	342,659 bbls SR + 799 bbls 15 lb linear 2,521,840 lbs 100 msh 8,833,438 lbs 40/70 wht + 733,200 lbs 40/70 CRC

Min Gas Allowable (165:10-17-7)

Gas Purchaser/Measurer

Targa



OR

First Sales Date

10-2-2017

INITIAL TEST DATA

Oil Allowable (165:10-13-3)

INITIAL TEST DATE	10-4-2017	10-13-2017
OIL-BBL/DAY	240	434
OIL-GRAVITY (API)	35.4° corrected	39.3° corrected
GAS-MCF/DAY	903	1,313
GAS-OIL RATIO CU FT/BBL	3,763 : 1	3,025 : 1
WATER-BBL/DAY	2190	2,955
PUMPING OR FLOWING	Flowing	Flowing
INITIAL SHUT-IN PRESSURE	3600	3600
CHOKE SIZE	30:64	38:64
FLOW TUBING PRESSURE	1,050	800

AS SUBMITTED

A record of the formations drilled through, and pertinent remarks are presented on the reverse. I declare that I have knowledge of the contents of this report and am authorized by my organization to make this report, which was prepared by me or under my supervision and direction, with the data and facts stated herein to be true, correct, and complete to the best of my knowledge and belief.

Richard L. Wright Richard L. Wright 10-25-2017 432 695 6970
SIGNATURE NAME (PRINT OR TYPE) DATE PHONE NUMBER
901 Missouri, Midland, Texas 79701
ADDRESS CITY STATE ZIP rwright@carreraenergy.com
EMAIL ADDRESS

PLEASE TYPE OR USE BLACK INK ONLY

FORMATION RECORD

Give formation names and tops, if available, or descriptions and thickness of formations drilled through. Show intervals cored or drillstem tested.

NAMES OF FORMATIONS	TOP
Avant	6841
Hogshooter	7121
Checkerboard	7362
Big Lime	7451
Oswego	7492
Cherokee HS	7626
Chester	8299
Manning	8960
Meramec	9550

LEASE NAME Almond Joy

WELL NO. 21-1H

FOR COMMISSION USE ONLY	
ITD on file <input type="checkbox"/> YES <input type="checkbox"/> NO	
APPROVED <input type="checkbox"/> DISAPPROVED <input type="checkbox"/>	2) Reject Codes
<div></div> <div></div> <div></div> <div></div> <div></div>	

Were open hole logs run?	<input checked="" type="checkbox"/> yes <input checked="" type="checkbox"/> no
Date Last log was run	<u>8-22-2017</u>
Was CO ₂ encountered?	<input checked="" type="checkbox"/> yes <input checked="" type="checkbox"/> no at what depths? <u></u>
Was H ₂ S encountered?	<input checked="" type="checkbox"/> yes <input checked="" type="checkbox"/> no at what depths? <u></u>
Were unusual drilling circumstances encountered?	<input checked="" type="checkbox"/> yes <input checked="" type="checkbox"/> no
If yes, briefly explain below.	

Other remarks:

640 Acres

If more than three drainholes are proposed, attach a separate sheet indicating the necessary information.

Direction must be stated in degrees azimuth. Please note, the horizontal drainhole and its end point must be located within the boundaries of the lease or spacing unit.

Directional surveys are required for all drainholes and directional wells.

Sec 16 640 Acres

Sec 21

BOTTOM HOLE LOCATION FOR DIRECTIONAL HOLE

SEC	TWP	RGE	COUNTY		
Spot Location		Feet From 1/4 Sec Lines		FSL	FWL
1/4	1/4	1/4	1/4		
Measured Total Depth		True Vertical Depth		BHL From Lease, Unit, or Property Line:	

BOTTOM HOLE LOCATION FOR HORIZONTAL HOLE: (LATERALS)

LATERAL #1

SEC	TWP	RGE	COUNTY		
21	20N	16W	Major		
Spot Location		Feet From 1/4 Sec Lines		FSL	FWL
SE 1/4	SE 1/4	SW 1/4		200	2501
Depth of Deviation		Radius of Turn		Total Length	
8812		502		180.62° 5301.30 ft	
Measured Total Depth		True Vertical Depth		BHL From Lease, Unit, or Property Line:	
14504		9499 avg		200 FSL & 2501 FWL, Sec 21	

LATERAL #2

SEC	TWP	RGE	COUNTY		
Spot Location		Feet From 1/4 Sec Lines		FSL	FWL
1/4	1/4	1/4	1/4		
Depth of Deviation		Radius of Turn		Total Length	
Measured Total Depth		True Vertical Depth		BHL From Lease, Unit, or Property Line:	

LATERAL #3

SEC	TWP	RGE	COUNTY		
Spot Location		Feet From 1/4 Sec Lines		FSL	FWL
1/4	1/4	1/4	1/4		
Depth of Deviation		Radius of Turn		Total Length	
Measured Total Depth		True Vertical Depth		BHL From Lease, Unit, or Property Line:	

Almond Joy #21-1H

SHL = 233' FSL & 2490' FWL, Sec 16, T-20-N, R-16-W, Major County, Ok

BHL = 200 FSL & 2501 FWL, Sec 21, T-20-N, R-16-W, Major County, Ok

Meramec Completion

SE/SE/SE/SW

SE/SE/SE/SW

Spud 7-5-17

First oil 9-29-17

gas sales 10-2-17

TD reached 7-24-17

First Oil Sales 10-3-17

Thru Btry 10-24-17

Rig Release 7-26-17

12-1/4" Surf hole. 845 ft

9-5/8" 36 # J-55 ST&C @

840 ft

Cmt'd w/ 215 sks Extendacem "A" 11.6 ppg 2.79

yield. Tailed w/ 145 sks swiftcem "A" 14.8 ppg

1.28 yield. Circ 62 bbls cmt

Formation Tops:

Avant	6841
Hog shooter	7121
Checkerboard	7362
BIG LIME	7451
OSWEGO	7492
Cherokee HS	7626
Chester	8299
Manning	8960
MERAMEC	9550

Frac Totals

Total Load	347,247	bbls
Total Acid	892	bbls
Total Slickwater	342,659	bbls
Total L Frac	799	bbls
Total 100 Mesh	2,521,840	lbs
Total 40/70	8,833,438	lbs
Total Pump Down	733,200	bbls
Total sand	12,088,478	lbs
Sand lbs/ft	2705	lbs
Wtr bbls/ ft	78	bbls

Depth
(TVD-ft)

Elev Gr 1699'. KB 27 ft

API # 35-093 25071

Wellbore Sketch

20" Cond @ ± 120'

268 jts 2-7/8" 6.5# L-80 EUE 8rd tubing

XN nipple @ 8,665 ft

EOT @ 8,697 ft

KOP ± 8812

10° curve

EOC ± 9,815' (82.8°)

TVD = 9,499 avg

Lateral TD = 14,504 ft

Shoe @ ± 14,504 ft

FC @ ± 14,457 ft

PBTD LC @ ± 14,412 ft

VS=5301

Effective lat 4,469'

8-3/4" Hole 9835 ft (85°)

7" 29# P-110 LTC

@ 9815' (82.8°)

Cmt'd w/ 600 sks NeoCem "A" mixed 11 ppg

2.72 yield. Tailed w/ 200 Sks NeoCem "A"

mixed 13 ppg 1.47 yield. TOC 2892' per CBL

ran 8-22-17

Lnr top 8,708'

26 Stages (36 holes per stg except stg 25) Stgs position = 14394-272; 14233-14111; 14072-13950; 13911-789; 13750-628; 13589-467; 13428-306; 13267-145; 13106-12984; 12945-823; 12784-662; 12623-501; 12462-340; 12301-179; 12140-018; 11979-857; 11818-696; 11657-535; 11496-374; 11335-213; 11174-052; 11013-10891; 10852-730; 10691-569; 10530-10,307; 10126-9925. Total of 954 holes

4-1/2" 11.6 lb HCP-110 LTC Lnr (8,708' to 14,504')

Cmt w/ 400 sks "A" NeoCem mixed 13 ppg yield 1.56. Circ 30 bbls cement off

liner top

11000

Image @ 1002A