

Oklahoma Corporation Commission
Oil & Gas Conservation Division
Post Office Box 52000
Oklahoma City, Oklahoma 73152-2000
Rule 165: 10-3-25

Form 1002A

API No.: 35019256650001

Completion Report

Spud Date: March 26, 2012

OTC Prod. Unit No.: 019-209553

Drilling Finished Date: August 03, 2012

Amended

1st Prod Date:

Amend Reason: PLUGGED AND ABANDONED

Completion Date: March 28, 2013

Recomplete Date: October 18, 2017

Drill Type: HORIZONTAL HOLE

Well Name: TYER 3-12H

Purchaser/Measurer:

Location: CARTER 12 3S 2E
NW SW NW NW
970 FNL 310 FWL of 1/4 SEC
Derrick Elevation: 0 Ground Elevation: 814

First Sales Date:

Operator: XTO ENERGY INC 21003

810 HOUSTON ST
FORT WORTH, TX 76102-6203

Completion Type		Location Exception		Increased Density	
X	Single Zone	Order No		Order No	
	Multiple Zone	594204		593909	
	Commingled	612606			

Casing and Cement							
Type	Size	Weight	Grade	Feet	PSI	SAX	Top of CMT
CONDUCTOR	16	109	K-55	107		21	SURFACE
SURFACE	9 5/8	36	J-55	2023		510	SURFACE
PRODUCTION	5 1/2	20	P-110	16850		1775	14125

Liner								
Type	Size	Weight	Grade	Length	PSI	SAX	Top Depth	Bottom Depth
There are no Liner records to display.								

Total Depth: 16850

Packer	
Depth	Brand & Type
There are no Packer records to display.	

Plug	
Depth	Plug Type
There are no Plug records to display.	

Initial Test Data

Test Date	Formation	Oil BBL/Day	Oil-Gravity (API)	Gas MCF/Day	Gas-Oil Ratio Cu FT/BBL	Water BBL/Day	Pumpin or Flowing	Initial Shut- In Pressure	Choke Size	Flow Tubing Pressure
Oct 18, 2017	WOODFORD									

Completion and Test Data by Producing Formation	
Formation Name: WOODFORD	Code: 319WDFD
Class: PLUG AND ABANDON	

Spacing Orders	
Order No	Unit Size
189475	640
197431	640
208140	640

Perforated Intervals	
From	To
15028	16734

Acid Volumes
0 ACID

Fracture Treatments
5 STAGES - 84,617 BTW, 301,886 POUNDS 100 MESH, 1,259,361 POUNDS 40/70

Formation	Top
------------------	------------

Were open hole logs run? No

Date last log run:

Were unusual drilling circumstances encountered? Yes

Explanation: CASING PARTED

Other Remarks
IRREGULAR SECTION. WELL TEMPORARILY ABANDONED DUE TO CASING PARTING BELOW CEMENT.

Lateral Holes
Sec: 12 TWP: 3S RGE: 2E County: CARTER SE NE SE NE 1660 FNL 56 FEL of 1/4 SEC Depth of Deviation: 11300 Radius of Turn: 674 Direction: 72 Total Length: 5158 Measured Total Depth: 16850 True Vertical Depth: 11554 End Pt. Location From Release, Unit or Property Line: 1660

FOR COMMISSION USE ONLY	
Status: Accepted	1138054

API NO. 019-25665
OTC PROD. UNIT NO. 019-209553

PLEASE TYPE OR USE BLACK INK ONLY
NOTE: Attach copy of original 1002A if recompletion or reentry.

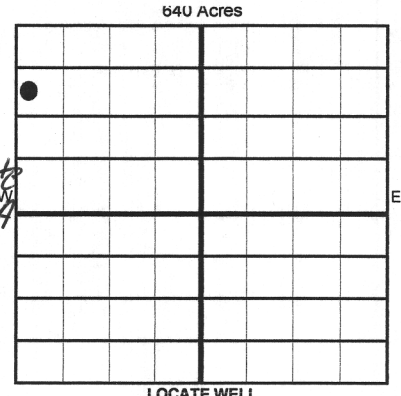
OKLAHOMA CORPORATION COMMISSION
Oil & Gas Conservation Division
Post Office Box 52000
Oklahoma City, Oklahoma 73152-2000
Rule 165:10-3-25

RECEIVED
OCT 30 2017
OKLAHOMA CORPORATION COMMISSION

ORIGINAL
X AMENDED
Reason Amended Plugged and Abandoned
TYPE OF DRILLING OPERATION
STRAIGHT HOLE DIRECTIONAL HOLE ☒ HORIZONTAL HOLE
SERVICE WELL
If directional or horizontal, see reverse for bottom hole location.

COMPLETION REPORT

COUNTY	Carter	SEC	12	TWP	3S	RGE	2E
LEASE NAME	TYER			WELL NO.	3-12H		
SFL	NW 1/4 SW 1/4 NW 1/4 NW 1/4			FNL	970' 310'		
ELEVATION	Derrick FI GL: 814' Ground			Latitude if Known	34°18'54.4"N		
OPERATOR NAME	XTO ENERGY INC.			OTC/OCC OPERATOR NO.	21003		
ADDRESS	210 PARK AVENUE, SUITE 2350						
CITY	OKLAHOMA CITY		STATE	OKLAHOMA		ZIP	73102



COMPLETION TYPE

<input checked="" type="checkbox"/>	SINGLE ZONE
<input type="checkbox"/>	MULTIPLE ZONE
<input type="checkbox"/>	Application Date
<input type="checkbox"/>	COMINGLED
<input type="checkbox"/>	Application Date
LOCATION EXCEPTION ORDER NO. 594204 612606	
INCREASED DENSITY ORDER NO. 593909	

CASING & CEMENT (Form 1002C must be attached)

TYPE	SIZE	WEIGHT	GRADE	FEET	PSI	SAX	TOP OF CEMENT
Conductor	16"	109	K-55	107		21	Surface
Surface	9 5/8"	36	J-55	2023		510	Surface
Intermediate							
Production							
Liner	5 1/2"	20	P-110	16,850		1775	14125

PACKER @ BRAND & TYPE PLUG @ TYPE PLUG @ TYPE
PACKER @ BRAND & TYPE PLUG @ TYPE PLUG @ TYPE

TOTAL DEPTH

16,850'

COMPLETION & TEST DATA BY PRODUCING FORMATION

FORMATION	WOODFORD						
SPACING & SPACING ORDER NUMBER	640: 197431, 208140,	189475					Reported to Frac Focus
CLASS: Oil, Gas, Dry, Inj, Disp, Comm Disp, Svc	PTA						
PERFORATED INTERVALS	5 Stages						
	15028-16734'						
ACID/VOLUME Fracture Treatment (Fluids/Prop Amounts)	0 acid						
	84617 BTW						
	301,886# 100 Mesh						
	1,259,361# 40/70						

INITIAL TEST DATA	<input type="checkbox"/> Request minimum gas allowable (165:10-17-7)	Gas Purchaser/Measurer	1st Sales Date
INITIAL TEST DATE	P&A'd 10/18/2017		
OIL-BBL/DAY			
OIL-GRAVITY (API)			
GAS-MCF/DAY			
GAS-OIL RATIO CU FT/BBL			
WATER-BBL/DAY			
PUMPING OR FLOWING			
INITIAL SHUT-IN PRESSURE			
CHOKE SIZE			
FLOW TUBING PRESSURE			

AS SUBMITTED

A record of the formations drilled through, and pertinent remarks are presented on the reverse. I declare that I have knowledge of the contents of this report and am authorized by my organization to make this report, which was prepared by me or under my supervision and direction, with the data and facts stated herein to be true, correct, and complete to the best of my knowledge and belief.

hbebbie waggoner
SIGNATURE
210 Park Avenue, Suite 2350
ADDRESS
Oklahoma City
CITY
Oklahoma
STATE
73102
ZIP
debbie waggoner@xtoenergy.com
EMAIL ADDRESS
10/27/2017
DATE
405-232-4011
PHONE NUMBER

Give formation names and tops, if available, or descriptions and thickness of formations drilled through. Show intervals cored or drillstem tested.

LEASE NAME

TYLER

WELL NO. 3-12H

NAMES OF FORMATIONS	TOP

FOR COMMISSION USE ONLY	
ITD on file	<input type="checkbox"/> YES <input type="checkbox"/> NO
APPROVED	DISAPPROVED
2) Reject Codes	

Were open hole logs run?	<u> </u> yes	<u> X </u> no
Date Last log was run		
Was CO ₂ encountered?	<u> </u> yes	<u> X </u> no at what depths?
Was H ₂ S encountered?	<u> </u> yes	<u> X </u> no at what depths?
Were unusual drilling circumstances encountered?	<u> X </u> yes	<u> </u> no
If yes, briefly explain.		
Casing parted		

Other remarks:

IRREGULAR SECTION

Well TA'd due to casing parting below cement.

640 Acres

A 5x5 grid with a dot at (4, 3).

If more than three drainholes are proposed, attach a separate sheet indicating the necessary information.

Direction must be stated in degrees azimuth.
Please note, the horizontal drainhole and its end
point must be located within the boundaries of the
lease or spacing unit.

Directional surveys are required for all drainholes and directional wells.
640 Acres

640 AcresA blank 10x10 grid for graphing. The grid is composed of 10 columns and 10 rows of squares. A thick vertical line runs down the center, separating the first five columns from the last five columns. A thick horizontal line runs across the middle, separating the first five rows from the last five rows. The intersection of these two lines is at the center of the grid. The top edge of the grid is labeled with the numbers 0, 1, 2, 3, 4, 5, 6, 7, 8, 9 from left to right. The right edge of the grid is labeled with the numbers 0, 1, 2, 3, 4, 5, 6, 7, 8, 9 from top to bottom.

BOTTOM HOLE LOCATION FOR DIRECTIONAL HOLE

SEC	TWP	RGE	COUNTY		
Spot Location			Feet From 1/4 Sec Lines		
1/4	1/4	1/4	1/4	FSL	FWL
Measured Total Depth		True Vertical Depth	BHL From Lease, Unit, or Property Line:		

BOTTOM HOLE LOCATION FOR HORIZONTAL HOLE: (LATERALS)

LATERAL #1

SEC 12	TWP 3S	RGE 2E	COUNTY Carter
Spot Location SE 1/4 NE 1/4 SE 1/4 NE 1/4	Feet From 1/4 Sec Lines 1660' FNL 56' FEL		
Depth of Deviation 11300'	Radius of Turn 674.8'	Direction 72.2°	Total Length 5158.2'
Measured Total Depth 16,850'	True Vertical Depth 11,554'	End Pt Location From Lease, Unit or Property Line: 1660' FNL & 56' FEL	

LATERAL #2

SEC	TWP	RGE	COUNTY				
Spot Location				Feet From 1/4 Sec Lines			
1/4	1/4	1/4	1/4		FSL	FWL	
Depth of Deviation		Radius of Turn		Direction	Total Length		
Measured Total Depth		True Vertical Depth		End Pt Location From Lease, Unit or Property Line:			

LATERAL #3

SEC	TWP	RGE	COUNTY				
Spot Location				Feet From 1/4 Sec Lines			
1/4	1/4	1/4	1/4	FSL		FWL	
Depth of Deviation		Radius of Turn		Direction		Total Length	
Measured Total Depth		True Vertical Depth		End Pt Location From Lease, Unit or Property Line:			