

Oklahoma Corporation Commission
Oil & Gas Conservation Division
Post Office Box 52000
Oklahoma City, Oklahoma 73152-2000
Rule 165: 10-3-25

Form 1002A

API No.: 35103238120002

Completion Report

Spud Date: November 21, 2003

OTC Prod. Unit No.: 103-112385

Drilling Finished Date: November 25, 2003

1st Prod Date: December 04, 2003

Amended

Completion Date: December 17, 2003

Amend Reason: RECLASSIFY WELL AS TEMPORARILY ABANDONED

Recomplete Date: November 01, 2017

Drill Type: STRAIGHT HOLE

Well Name: MODEL T 6-15

Purchaser/Measurer:

Location: NOBLE 15 23N 2W
SW NW SE NW
900 FSL 1535 FWL of 1/4 SEC
Derrick Elevation: 961 Ground Elevation: 952

First Sales Date:

Operator: CHESAPEAKE OPERATING LLC 17441
PO BOX 18496
6100 N WESTERN AVE
OKLAHOMA CITY, OK 73154-0496

Completion Type		Location Exception		Increased Density	
	Single Zone	Order No		Order No	
	Multiple Zone	There are no Location Exception records to display.		There are no Increased Density records to display.	
X	Commingled				

Casing and Cement							
Type	Size	Weight	Grade	Feet	PSI	SAX	Top of CMT
SURFACE	8 5/8	24	K-55	310		200	SURFACE
PRODUCTION	5 1/2	17	K-55	3000		310	1436

Liner								
Type	Size	Weight	Grade	Length	PSI	SAX	Top Depth	Bottom Depth
There are no Liner records to display.								

Total Depth: 3000

Packer		Plug	
Depth	Brand & Type	Depth	Plug Type
There are no Packer records to display.		2680	CIBP

Initial Test Data

Test Date	Formation	Oil BBL/Day	Oil-Gravity (API)	Gas MCF/Day	Gas-Oil Ratio Cu FT/BBL	Water BBL/Day	Pumpin or Flowing	Initial Shut-In Pressure	Choke Size	Flow Tubing Pressure
Oct 21, 2017	PAWHUSKA-HOOVER-ELGIN-OREAD-ENDICOTT									

Completion and Test Data by Producing Formation

Formation Name: PAWHUSKA

Code: 406PHSK

Class: TA

Spacing Orders

Order No	Unit Size
There are no Spacing Order records to display.	

Perforated Intervals

From	To
2000	2010

Acid Volumes

There are no Acid Volume records to display.

Fracture Treatments

There are no Fracture Treatments records to display.

Formation Name: HOOVER

Code: 406HOVR

Class: TA

Spacing Orders

Order No	Unit Size
There are no Spacing Order records to display.	

Perforated Intervals

From	To
2039	2152

Acid Volumes

There are no Acid Volume records to display.

Fracture Treatments

There are no Fracture Treatments records to display.

Formation Name: ELGIN

Code: 406ELGN

Class: TA

Spacing Orders

Order No	Unit Size
There are no Spacing Order records to display.	

Perforated Intervals

From	To
2245	2346

Acid Volumes

There are no Acid Volume records to display.

Fracture Treatments

There are no Fracture Treatments records to display.

Formation Name: OREAD

Code: 406ORED

Class: TA

Spacing Orders

Order No	Unit Size
There are no Spacing Order records to display.	

Perforated Intervals

From	To
2383	2407

Acid Volumes

There are no Acid Volume records to display.

Fracture Treatments

There are no Fracture Treatments records to display.

Formation Name: ENDICOTT		Code: 406ENDC	Class: TA
Spacing Orders		Perforated Intervals	
Order No	Unit Size	From	To
There are no Spacing Order records to display.		2452	2498
Acid Volumes		Fracture Treatments	
There are no Acid Volume records to display.		There are no Fracture Treatments records to display.	
Formation Name: PAWHUSKA-HOOVER-ELGIN Code: Class: TA -OREAD-ENDICOTT			

Formation	Top
HERINGTON	487
FT RILEY	655
EBERT	1673
NEWKIRK	1950
PAWHUSKA	2000
HOOVER	2074
ELGIN	2245
OREAD	2366
ENDICOTT	2452
LOVELL	2557
HASKELL	2725
TONKAWA	2754

Were open hole logs run? Yes

Date last log run: November 24, 2003

Were unusual drilling circumstances encountered? No

Explanation:

Other Remarks
COMMINGLE ORDER NUMBER 488011

FOR COMMISSION USE ONLY	
Status: Accepted	1138064

API NO. 103-23812
OTC PROD. UNIT NO. 103-112385

PLEASE TYPE OR USE BLACK INK ONLY
NOTE: Attach copy of original 1002A if recompletion or reentry.

OKLAHOMA CORPORATION COMMISSION

Oil & Gas Conservation Division

Post Office Box 52000

Oklahoma City, Oklahoma 73152-2000

Rule 165:10-3-25

RECEIVED Form 1002A Rev. 2009

NOV 01 2017

OKLAHOMA CORPORATION COMMISSION

ORIGINAL
X AMENDED
Reason Amended *Reclassify well as Temporarily Abandoned*

TYPE OF DRILLING OPERATION

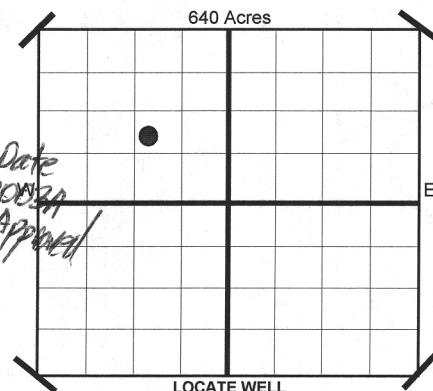
X STRAIGHT HOLE SERVICE WELL
DIRECTIONAL HOLE
HORIZONTAL HOLE

If directional or horizontal, see reverse for bottom hole location.

COUNTY NOBLE SEC 15 TWP 23N RGE 02W
LEASE NAME MODEL T WELL NO 6-15
SW 1/4 NW 1/4 SE 1/4 NW 1/4 900 1/4 SEC 1,535
ELEVATION 961 Ground 952
Derrick Fl OPERATOR NAME CHESAPEAKE OPERATING, L.L.C. OTC/OCC OPERATOR NO. 17441
ADDRESS P.O. BOX 18496
CITY OKLAHOMA CITY STATE OK ZIP 73154

COMPLETION REPORT

SPUD DATE 11/21/2003
DRLG FINISHED DATE 11/25/2003
DATE OF WELL COMPLETION 12/17/2003
1ST PROD DATE 12/4/2003
RECOMP DATE 11-1-2017
Longitude (if Known)



COMPLETION TYPE

SINGLE ZONE
MULTIPLE ZONE
X COMMINGLED *3/3/2008
LOCATION EXCEPTION ORDER NO. N/A
INCREASED DENSITY ORDER NO. N/A

CASING & CEMENT (Form 1002C must be attached)

TYPE	SIZE	WEIGHT	GRADE	FEET	PSI	SAX	TOP
CONDUCTOR							
SURFACE	8 5/8"	24#	K-55	310		200	SURFACE
INTERMEDIATE							
PRODUCTION	5 1/2"	17#	K-55	3,000		310	1,436
LINER							

PACKER @ BRAND & TYPE PLUG @ TYPE PLUG @ 2680 TYPE CIBP TOTAL DEPTH 3,000

COMPLETION & TEST DATA BY PRODUCING FORMATION

FORMATION	PAWHUSKA	HOOVER	ELGIN	OREAD	ENDICOTT
SPACING & SPACING ORDER NUMBER	UNSPACED	UNSPACED	UNSPACED	UNSPACED	UNSPACED
CLASS: Oil, Gas, Dry, Inj. Disp, Comm Disp, Svc	Temporarily Abandoned	Temporarily Abandoned	Temporarily Abandoned	Temporarily Abandoned	Temporarily Abandoned
PERFORATED INTERVALS	2000-2010	2039-2152	2245-2346	2383-2407	2452-2498
ACID/VOLUME					
FRACTURE TREATMENT (Fluids/Prop Amounts)					

Minimum Gas Allowable (165:10-17-7) Gas Purchaser/Measurer
Oil Allowable (165:10-13-3) 1st Sales Date

INITIAL TEST DATA

INITIAL TEST DATE 10/21/2017
OIL-BBL/DAY 0
OIL-GRAVITY (API)
GAS-MCF/DAY 0
GAS-OIL RATIO CU FT/BBL
WATER-BBL/DAY 0
PUMPING OR FLOWING
INITIAL SHUT-IN PRESSURE
CHOKE SIZE
FLOW TUBING PRESSURE

AS SUBMITTED

A record of the formations drilled through, and pertinent remarks are presented on the reverse. I declare that I have knowledge of the contents of this report and am authorized by my organization to make this report, which was prepared by me or under my supervision and direction, with the data and facts stated herein to be true, correct, and complete to the best of my knowledge and belief.

SIGNATURE JP Powell, Regulatory Specialist 10/31/2017 405-848-8000
P.O. BOX 18496 OKLAHOMA CITY OK 73154
ADDRESS CITY STATE ZIP
EMAIL ADDRESS jp.powell@chk.com

PLEASE TYPE OR USE BLACK INK ONLY
FORMATION RECORD

Give formation names and tops, if available, or descriptions and thickness of formations drilled through. Show intervals cored or drillstem tested.

LEASE NAME MODEL T

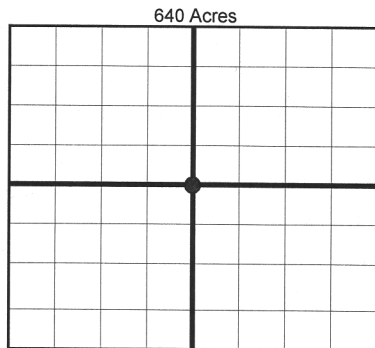
WELL NO. 6-15

NAMES OF FORMATIONS	TOP
HERINGTON	487
FT. RILEY	655
EBERT	1,673
NEWKIRK	1,950
PAWHUSKA	2,000
HOOVER	2,074
ELGIN	2,245
OREAD	2,366
ENDICOTT	2,452
LOVELL	2,557
HASKELL	2,725
TONKAWA	2,754

FOR COMMISSION USE ONLY	
ITD on file <input type="checkbox"/> YES <input type="checkbox"/> NO	
APPROVED _____	DISAPPROVED _____
2) Reject Codes	

Were open hole logs run?	<u>X</u> yes <input type="checkbox"/> no
Date Last log was run	<u>11/24/2003</u>
Was CO ₂ encountered?	<input type="checkbox"/> yes <u>X</u> no at what depths?
Was H ₂ S encountered?	<input type="checkbox"/> yes <u>X</u> no at what depths?
Were unusual drilling circumstances encountered?	<input type="checkbox"/> yes <u>X</u> no
If yes, briefly explain.	

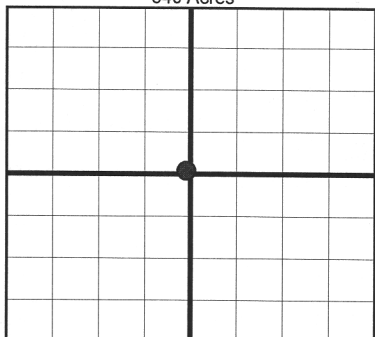
Other remarks: *COMINGLE ORDER NO. 488011



If more than three drainholes are proposed, attach a separate sheet indicating the necessary information.

Direction must be stated in degrees azimuth. Please note, the horizontal drainhole and its end point must be located within the boundaries of the lease or spacing unit.

Directional surveys are required for all drainholes and directional wells.



BOTTOM HOLE LOCATION FOR DIRECTIONAL HOLE

SEC	TWP	RGE	COUNTY
Spot Location			
1/4	1/4	1/4	1/4
Measured Total Depth		True Vertical Depth	Feet From 1/4 Sec Lines FSL FWL
BHL From Lease, Unit, or Property Line:			

BOTTOM HOLE LOCATION FOR HORIZONTAL HOLE: (LATERALS)

SEC	TWP	RGE	COUNTY
Spot Location			
1/4	1/4	1/4	1/4
Depth of Deviation		Radius of Turn	Direction Total Length
Measured Total Depth		True Vertical Depth	BHL From Lease, Unit, or Property Line:

LATERAL #2

SEC	TWP	RGE	COUNTY
Spot Location			
1/4	1/4	1/4	1/4
Depth of Deviation		Radius of Turn	Direction Total Length
Measured Total Depth		True Vertical Depth	BHL From Lease, Unit, or Property Line:

LATERAL #3

SEC	TWP	RGE	COUNTY
Spot Location			
1/4	1/4	1/4	1/4
Depth of Deviation		Radius of Turn	Direction Total Length
Measured Total Depth		True Vertical Depth	BHL From Lease, Unit, or Property Line: